

MHS 2018 • MARS HEATING SPECIAL

Motors - Components - Service & Installation

**Peak Performers
Commercial
Motor Promotion**

See Page 19 For Details



Azure® Motor see page 5



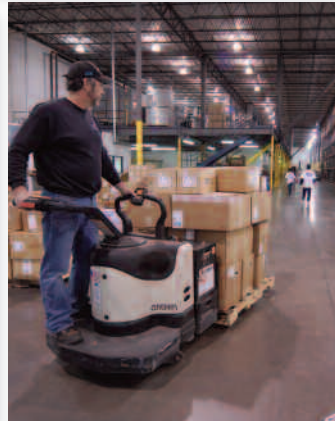
Surge Protection see page 61



Oil Burner Motors see page 6



**Disconnect
w/Internal Surge Protection**
see page 60



The Leading Brands You Trust For...

- Quality
- Innovation
- Design
- Leadership

MARS has been serving the HVAC/R market since 1946 and is proud to present the most complete motor and accessory product offering to serve your needs. Our capabilities include:

- Consolidation - One Stop Shop
- Over 14,000 combinable products
- Industry leading brands
- Award winning distribution facilities
- +97% order fill rate
- Shipments within 24 hours
- Billing accuracy
- Sales coverage serving every customer location
- In-House Art Department for customer flexibility
- Bilingual Website
- Training Focused
- EDI capabilities

Thank you for your business !

©2018 MOTORS & ARMATURES, Inc.

All rights reserved. This catalog may not be reproduced in whole or in part in any form without written permission from Motors & Armatures, Inc. MARS is a registered trademark of Motors & Armatures, Inc. MARS part numbers are trademarks of Motors & Armatures, Inc.



Toll Free (800) 445-4155 • Fax (631) 348-7160
www.marsdelivers.com



Table Of Contents

Motors	Page No.
3.3" Commercial Refrigeration Motors	20, 25 – 27, 30, 33, 38
A/C & Heating Unit Motors.....	34
Azure® Digi-Motor®.....	4, 5
Azure® Watt Motors.....	24
Belted Fan & Blower Motors	9, 11
Broad Ocean ECM Tester	29
Commercial Fan & Blower	19
Condenser Fan Motors	12-18, 31, 32
Direct Drive Blower Motors	7, 8, 9, 30, 32, 36
Draft Inducer Motors	10
ECM 44 Frame Motors.....	23
ECM 51 Frame Motors.....	24, 26, 28, 30
ECM Evap/Cond Motors	26
ECM Fan/Motor System.....	29
ECM High Efficiency Motors	28
ECplus™ Refrigeration Motors	26
Direct Drive Blower Motors	6, 31, 32, 37
JARD Watt Motor	30
Motors, Elco	28
Motors, FASCO	33, 34
Motors, Genteq	37
Motors, JARD	30, 31
Motors, Marathon	35, 36
OEM Direct Replacement Motors, Copeland.....	21
Oil Burner Motors.....	6
One-On-One™ Direct Replacement Motors.....	22
Peak Performers Motor Promotion	19
Q-Sync Refrigeration Motors	20
Torsion Flex Mount Motors.....	8
Heating Products	
Contactors, Magnetik Line 30 Amp 2 Pole.....	44
Crankcase Heaters	44
EasyHeat Heating Cable.....	45
Electric Heat Restrung Kits	40
Electric Heat Sequencers	46
Fan & Limit Switches	46, 47
Fan Control Centers.....	49
Furnace Legs, Adjustable	39
Furnace Mounting Blocks	39
Heat Pump Risers.....	39
Hot Surface Igniters	42
Switching Relays, JARD	49
Thermocouples	44
Thermostat Guards	41
Time Delay Relays.....	46
Transformers, JARD	48
Transformers, MARS	48

MARS Components	Page No.
Capacitors.....	51
Capacitors, Turbo, Hardstarts & Tester.....	54
Capacitors, Mini-Split	62
Condensate Pumps	50
Condensate Pump, Mini-Split Kit	62
Contactors, MARS 780	55, 56
Contactors, MARS 910 Definite Purpose.....	55, 57
Contactors, JARD	55, 58
Disconnect with Internal Surge	60
Disconnect Switch, Mini-Split.....	62
Fuses, JARD.....	63
Hardstarts, MARS	54
Line Sets, Coverguard	59
MARS HVAC Surge Protective Devices	61
MARS Universal Remote Control	62
Pressure Switches, JARD.....	52
Pressure Switches, MARS.....	53

Service & Installation

A/C Condenser Pads	67
A/C Mounting Brackets	67
A/C Whips	69
Anti-Vibration Pads	70
Concentric Vent Kits.....	68
Conduit.....	69
Disconnects, MARS.....	69
Duct Straps	70
Fan Blades and Accessories.....	65
Fuses	63
Line Set Covers	59
MARS Flared Line-Set Seal Kits.....	43
Mini-Split Wall Mount Brackets	67
Mini-Split Wire.....	71
Mounting Brackets	66
Putty, MARS.....	68
PVC Traps.....	69
Refrigerant Locking Caps	67
Sealants, MARS.....	68
Cool Gel.....	68
Super-Fit™ Replacement Motors	38
Thermostat Wire	71
Tubing, Clear Vinyl.....	70
Tubing, PVC Braided	70
V-Belts, Gates	64

AZURE® Digi-Motor®

Direct Drive Blower Applications PSC and X13 Replacement Motor in One

Easy to Install

- In PSC mode, Azure® wires exactly like a PSC motor (no capacitor required)
- In X13 mode, Azure® accepts the factory power harness and wires directly to the thermostat

Auto-Sizes to Each Application

- During initial set-up, Azure® measures the external static pressure of the system and programs its speed taps to the correct horsepower for each application
- If additional customizing is required, an optional hand held programmer (MARS No. 08502) can be used

Outboard Surge Protection

- Unlike other ECM motors, an outboard surge protector is included with the Azure® wiring harness. This is a replaceable device (MARS No. 08593)



See us on
YouTube

Features:	Benefits:
Multi HP, reversible, dual voltage	Reduces truck stock
Auto sizes to each application	Automatically provides correct CFM
Dedicated 625 RPM speed tap	Maximizes performance of IAQ equipment
Field tunable* (except 10830)	Customizes the CFM of any application
Ball bearing	Provides quiet operation
2 year warranty	Provides peace of mind

*Motor speed field adjustable with hand held programmer, MARS No. 08502.

MARS NO.	DIA.	HP	VOLTS	RPM	SPEEDS	ROT	EXTERNAL SURGE PROTECTION	AUTO SIZING	REPLACES
10860	5.5"	1/5-1/2	115/230	1075	5	REV	Yes	Yes	PSC/X13
10861	5.5"	1/2-1	115/230	1075	5	REV	Yes	Yes	PSC/X13
10867	5.0"	1/8-1/3	115/230/277	1075	5	REV	No	No	PSC



AZURE® Digi-Motor®

Condenser Fan Applications 825 & 1075 RPM Motor in One

Easy to Mount

- The short shell 1/3 HP (MARS No.10874) fits where larger competitive motors will not

Easy to Configure

- Simply power the motor to cycle it through 4 possible configurations and lock in the desired mode
 - 1075 RPM CW • 1075 RPM CCW
 - 825 RPM CW • 825 RPM CCW

Simple 2 Wire Installation

- Connect the 2 motor leads directly to the definite purpose contactor; there are no capacitor, rotation, or RPM jumper wires

Outboard Surge Protection

- Unique to Azure® is the replaceable outboard surge protector included within the wire harness of each Azure® condenser fan motor



Scan for videos.

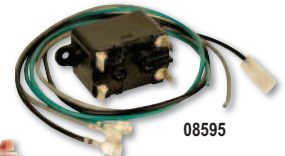
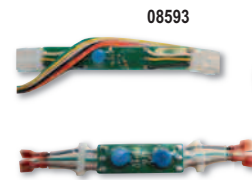


Features:	Benefits:
Multi HP, reversible, 825/1075 RPM	Reduces truck stock
High efficiency	Reduces energy consumption
Ball bearing	Provides quiet operation
No capacitor required	Improves reliability
Rheem mounting holes (10874)	Fits Rheem equipment
2 year warranty	Provides peace of mind

MARS NO.	HP	VOLTS	RPM	ROTATION	ORIENTATION	RHEEM HOLES
10874	1/8 - 1/3	208-230	825/1075	Rev	Shaft Down	Yes
10870	1/3 - 1/2	208-230	825/1075	Rev	Shaft Up/Down	No
10875	1/8 - 1/3	208-230	1075	Rev	Horizontal	No
10872	1/3 - 1/2	208-230	1075	Rev	Horizontal	No

Accessories for Azure® Digi-Motor®

MARS NO.	DESCRIPTION
08502	Hand Held Programmer 10860/10861/10865/10866/10867
08593	Replacement Surge Protector 10860/10861
08595	Constant Fan Kit 10860/10861
08598	Replacement Surge Protector 10870/10872/10874/10875



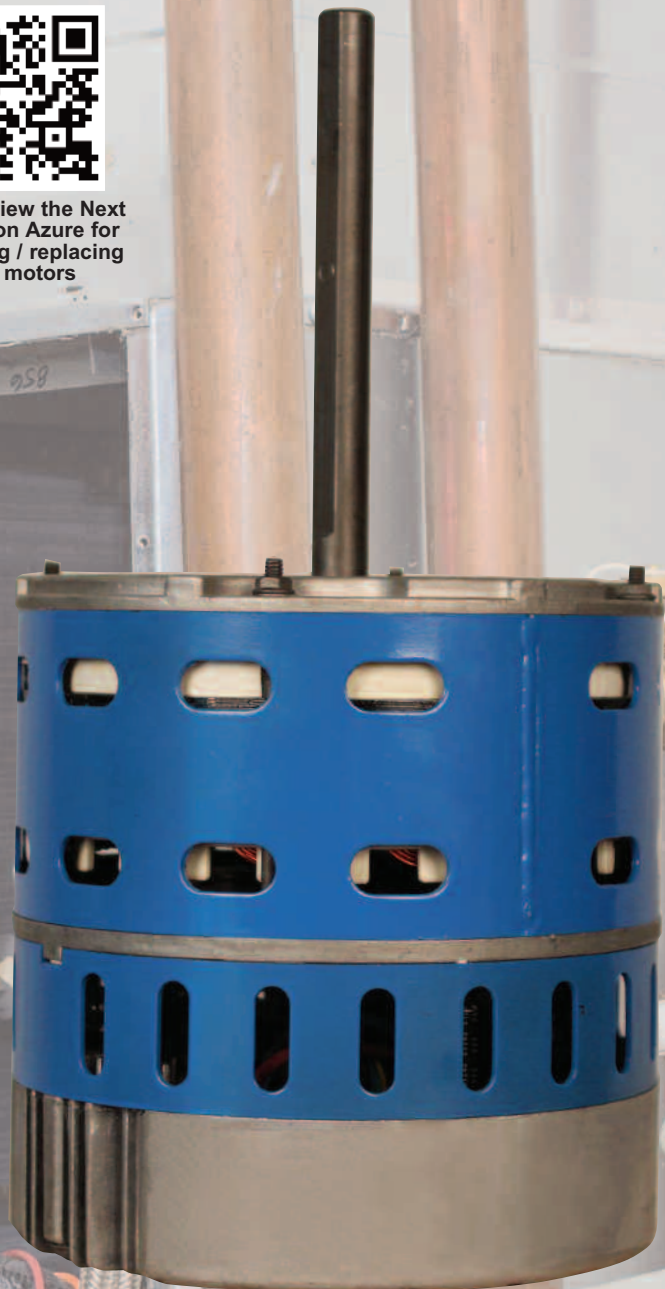


AZURE®

NEXT GENERATION OF ECM



Scan to view the Next generation Azure for upgrading / replacing PSC motors



Drop-In Azure® ECM Direct Drive Replaces Standard PSC Motors to Provide Optimal CFM and Maximum IAQ Equipment Performance.

Features:	Benefits:
Connects Directly to Fan Relays	Simple to Understand
Factory Programmed HP	Quick to Install
No Capacitor Required	No Added Cost
Constant Torque Design	Helps Maintain CFM
Compatible with Hand Held Programmer (No. 08502)	Optimizes CFM in Problem Installations

MARS NO.	DIA.	HP	VOLTS	RPM	SPEEDS	ROT	EXTERNAL SURGE PROTECTION	AUTO SIZING	REPLACES
10865	5.5"	1/3-1/2	115/230	1075	5	REV	No	No	PSC
10866	5.5"	3/4-1	115/230	1075	5	REV	No	No	PSC



Toll Free (800) 445-4155 • Fax (631) 348-7160
www.marsdelivers.com

WARNING:
Cancer and Reproductive Harm
www.P65Warnings.ca.gov

BRING ON THE HEAT!

Oil Burner Motor Special!

MARS Oil Burner Motors

Ball Bearing

Features:

- All angle
- Split Phase and PSC
- Semi or totally enclosed
- Two bolt direct mounting for 48M and 48N

Specifications:

- Class 'B' insulation
- Single phase, 60 Hz
- Continuous duty
- Manual reset overload protection
- Auto reset protection for 30701
- Shaft length 1 3/4 except 30004 1 13/16
- Rotation-reversible except 30701 CCW from shaft end
- cULus



30701

MARS NO.	DIAMETER	HP	RPM/SPD	VOLTS	AMPS	NEMA FRAME	ENCL.	S.F.	SHAFT DIA.	INDUSTRY CROSS REFERENCE			
										AO Smith/Century	Beckett	Emerson/US Motors	Marathon

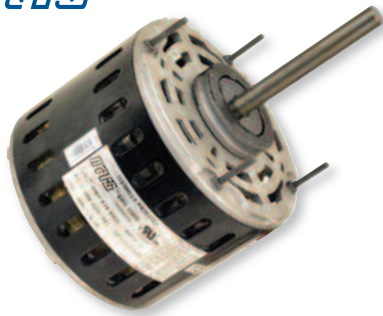
Split Phase

30600	6-1/2	1/8	1725/1	115	2.7	48N	TENV	1.0	1/2	EL2005	-	3196	O600
30100	5-1/2	1/7	3450/1	115	2.4	48M	Semi Enclosed	1.0	1/2	EL2002	-	3083	O100
30601	6-1/2	1/6	1725/1	115	2.8	48N	TENV	1.0	1/2	EL2014V1	-	3250	O601
30004	6-1/2	1/4	3450/1	115	3.8	48N	Semi Enclosed	1.0	1/2	EL2022	-	2302	O004

Oil Burner, PSC

30701	5-1/2	1/7	3450/1	115	1.5	-	Semi Enclosed	-	1/2	-	21805U	3274	O701
30011	6-1/2	1/2	3450/1	115/208-230	8.2/4.1	48N	Semi Enclosed	1.0	1/2	OL2052D	-	3267	O011

Motors



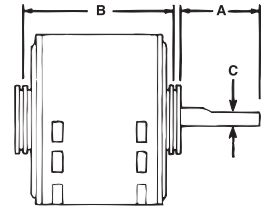
Direct Drive Blower Motors

Features:

- Sleeve bearing
- Rheem mounting holes
- 3 speeds
- 1/2 inch extended thru bolts
- 2-1/4 inch resilient rings

Specifications:

- Class "B" insulation
- Single phase, 60 Hertz
- Thermal overload protected
- Fan duty, continuous, air over
- Open construction
- 36 inch leads
- UL Recognized



1075 RPM - Three Speed - Reversible Rotation

MARS NO.	HP	ROT	VOLTS	AMPS	CAP REQUIRED	ENCL.	BRG.	DIMENSIONS		
								A	B	C
10583	1/4	Rev	115	4.2	5/370	OAO	Slv	4.50	4.89	1/2
10584	1/4	Rev	208-230	1.8	5/370	OAO	Slv	4.50	4.89	1/2
10585	1/3	Rev	115	6.1	5/370	OAO	Slv	4.50	5.14	1/2
10586	1/3	Rev	208-230	2.7	5/370	OAO	Slv	4.50	5.14	1/2
10587	1/2	Rev	115	7.5	10/370	OAO	Slv	4.50	5.89	1/2
10588	1/2	Rev	208-230	3.2	7.5/370	OAO	Slv	4.50	5.64	1/2
10589	3/4	Rev	115	11.2	15/370	OAO	Slv	4.50	6.14	1/2
10590	3/4	Rev	208-230	4.5	10/370	OAO	Slv	4.50	6.14	1/2
10591	1	Rev	115	11.8	20/370	OAO	Slv	4.50	5.80	1/2
10592	1	Rev	208-230	5.6	15/370	OAO	Slv	4.50	5.80	1/2



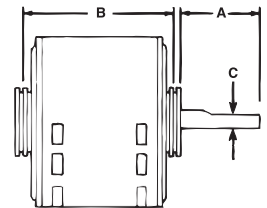
Multi-Horsepower Direct Drive Blower Motors

Features:

- Rheem mounting holes
- 2-1/4 inch resilient rings

Specifications:

- Class "B" insulation
- Single phase, 60 Hz
- Thermal overload protected
- UL Recognized



Four Speed

MARS NO.	HP	ROT	VOLTS	RPM	ENCL.	BRG.	DIMENSIONS			LEAD LENGTHS
							A	B	C	
10463	1/6 - 1/2	Rev	115	1075	OAO	Slv	5.50	4.73	1/2	41"
10464	1/6 - 1/2	Rev	208-230	1075	OAO	Slv	5.50	4.73	1/2	41"
10466	1/5 - 3/4	Rev	115	1075	OAO	Ball	5.80	5.73	1/2	41"
10467	1/5 - 3/4	Rev	208-230	1075	OAO	Ball	5.60	5.23	1/2	41"
10479	1/8 - 1/3	Rev	208-230	825	OAO	Slv	4.50	5.30	1/2	36"



High Efficiency Direct Drive Blower Motors – MARS Energy Master

Ball Bearing

Features:

- Optimized high efficiency design
- 12-15% more efficient compared to standard motors
- Permanently lubricated ball bearings
- Rheem mounting holes
- Extended thru bolts, shaft end
- 3 Speeds
- Open Construction
- 2-1/4 resilient rings - plus 2-1/2 split rings included

Specifications:

- Class "B" insulation
- Single phase, 60 Hertz
- Fan duty, continuous air over
- Automatic thermal overload protection
- 36 inch leads
- UL Recognized

1075 RPM – Reversible Rotation

MARS NO.	HP	VOLTS	AMPS	CAP REQUIRED	ENCL.	BRG.
10573	1/4	115	2.9	7.5/370	OPAO	Ball
10574	1/4	208-230	1.3	5/370	OPAO	Ball
10575	1/3	115	3.9	10/370	OPAO	Ball
10576	1/3	208-230	1.6	7.5/370	OPAO	Ball
10577	1/2	115	5.2	15/370	OPAO	Ball
10578	1/2	208-230	2.5	10/370	OPAO	Ball
10579	3/4	115	8.0	20/370	OPAO	Ball
10580	3/4	208-230	3.5	15/370	OPAO	Ball



MARS 48 Frame Torsion Flex Mount Motors

Features:

- Sleeve bearing
- Torsion flex mount
- 3 speeds
- 4-1/2 inch long, 1/2 inch diameter shaft
- Torsion mount sleeves and grommets included

Specifications:

- Class "B" insulation
- Single phase, 60 Hertz
- Thermal overload protected
- Fan duty, continuous, air over
- Open construction
- 36 inch leads
- UL Recognized

1075 RPM – Three Speed – Reversible Rotation

MARS NO.	HP	ROTATION	VOLTS	AMPS	CAP REQUIRED	ENCL.	BRG.
10683	1/4	REV	115	4.2	5/370	OAO	SLV
10684	1/4	REV	208-230	1.8	5/370	OAO	SLV
10685	1/3	REV	115	6.1	5/370	OAO	SLV
10686	1/3	REV	208-230	2.7	5/370	OAO	SLV
10687	1/2	REV	115	7.5	10/370	OAO	SLV
10688	1/2	REV	208-230	3.2	7.5/370	OAO	SLV
10689	3/4	REV	115	11.2	15/370	OAO	SLV
10690	3/4	REV	208-230	4.5	10/370	OAO	SLV



Motors



460V Direct Drive Blower Motors

MARS direct drive blower motors are installed in residential and commercial furnaces, air conditioners, exhaust fans, and other air handling equipment.

Features:

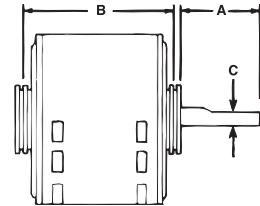
- All angle
- 2 speeds
- Extended studs
- 2-1/4 inch resilient rings

Specifications:

- Class "B" insulation
- Single phase, 60 Hz
- Thermal overload protected
- UL Recognized

Cross Reference

MARS No.	GE/ Genteq	Century/ AO Smith	US Motors/ Emerson	Marathon	ROTOM
20538	-	-	-	X038	-
20580	3280	BDH1036	-	-	M2-R32712
20581	3290	BDH1076	8947	-	M2-R32426



Reversible Rotation

MARS NO.	HP	VOLTS	AMPS	CAP REQUIRED	ENCL.	BRG.	DIMENSIONS			LEAD LENGTHS
							A	B	C	
1075 RPM - Two Speed										
20538	1/2	460	1.8	10/370	OAO	Ball	6.50	5.25	1/2	36"

Muti-Horsepower – Reversible Rotation

MARS NO.	HP	VOLTS	AMPS	CAP REQUIRED	ENCL.	BRG.	DIMENSIONS			LEAD LENGTHS
							A	B	C	
1075 RPM - Two Speed										
20580	1/3 - 1/4	460	0.95	7.5/370	OAO	Ball	6.50	4.50	1/2	36"
20581	3/4 - 1/2	460	2.1	15/370	OAO	Ball	4.50	5.80	1/2	36"

Belted Fan & Blower Motors

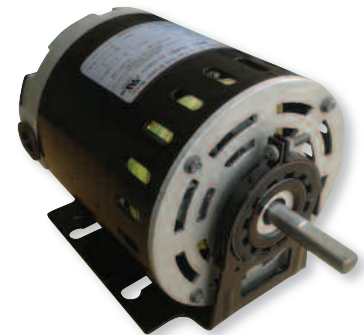
Ball Bearing

Features:

- Resilient base mounted
- Reversible
- Slotted holes in base match 48 or 56 frame bolt patterns
- 1/2 inch shaft diameter

Specifications:

- Class "B" insulation
- Single phase, 60 Hz
- Thermal overload protected
- Open construction
- Continuous duty
- UL Recognized

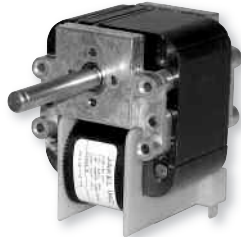


1725 RPM - Single Speed

MARS NO.	HP	VOLTS	FLA	S.F.	NEMA FRAME	COMPETITOR CROSS REFERENCE						
						AO Smith/ Century	Emerson/ US Motors	GE/ Genteq	Magnetek	Marathon	Packard	ROTOM
10401	1/4	115	4.3	1.35	48/56	GF2024, RB2024	2889, 8000	4701	808, 802	B303, B206	45014	BF-4701
10406	1/3	115	5.8	1.35	48/56	GF2034, RB2034	2888, 8100	4706	922, 805	B305, B207	45013	BF-4706
10408	1/2	115	7.7	1.25	48/56	GF2054, BF2054	2887, 8200	4708	F681, 811	B208	45012	BF-4708



10701



10704



10707



10709



10550



10551



10552



10553



10556



10565



10566



10555, 10558

MARS draft inducer blower assemblies are designed and manufactured to serve as drop-in, exact replacements.

Draft Inducer Blowers

MARS NO.	OEM	OEM NO.	APPLICATION	HP	VOLTS	AMPS	RPM	BEARING TYPE	CAP INCLUDED
10701	Rheem	70-24157-03	80+ Furnace	1/30	120	1.71	3400	Ball	-
10566	Carrier	HC27Q118	80 + Furnace	1/4	115	0.38	3030	Ball	5MFD/370
10704	Carrier	HC21ZE117	80+ Furnace	1/22	115	1.8	-	Ball	-
10709	Carrier	HC24HE230	80+ Furnace	1/40	208/230	1.0	-	Ball	-
10707	Lennox	88K8401	80+ Furnace	1/60	120	1.3	3000	Ball	-
10556	Nordyne	622567	80+ Furnace	1/33	115	0.43	3000	Ball	4MFD/250V
10558	Nordyne	622302	90+ Furnace	1/31	115	0.46	3300	Ball	6MFD/250V
10550	Goodman	0131G00007	80+ Furnace	1/50	230	0.24	3000	Ball	2MFD/370V
10551	Goodman	0131G00009	80+ Furnace	1/32	230	0.24	3000	Ball	2MFD/370V
10552	Goodman	0131M00121	80+ Furnace	1/50	230	0.22	3000	Ball	2MFD/370V
10553	Goodman	0131M00002P	80+ Furnace	1/50	115	0.40	3000	Ball	6MFD/250V
10555	Goodman	0271F00126	90+ Furnace	1/32	115	0.46	3150/2950	Ball	6MFD/250V
10563	Trane	D965130P01	80+ Furnace	1/39	230	0.22	2800/1500	Ball	2MFD/370V
10564	Trane	D965129P01	80+ Furnace	1/39	230	0.22	2800/1500	Ball	2MFD/370V
10565	Trane	D965128P01	80+ Furnace	1/34	230	0.24	3000	Ball	2MFD/370V



Motors

Fan & Blower Motors, Split Phase



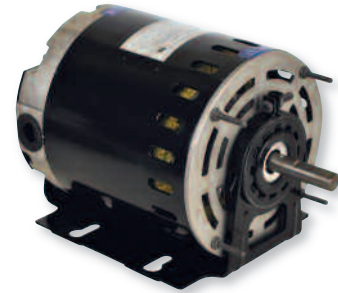
Ball Bearing

Features:

- Single speed, split phase
- 48/56 frame mounting holes
- Heavy gauge steel construction frame and base
- 1/2" x 1-7/8" Shaft with 1-5/8" Flat
- Extended thru bolts

Specifications:

- Class "B" insulation
- Single phase, 60 Hz
- Continuous duty
- Automatic thermal overload protection, as noted
- Dripproof
- cULus



1725 RPM - Reversible - Dripproof

MARS NO.	HP	VOLTS	AMPS	S.F.	NEMA FRAME	COMPETITOR CROSS REFERENCE					
						AO Smith/ Century	Baldor	Emerson/ US Motors	Genteq	Magnetek	Marathon
10301*	1/6	115	3.6	1.35	48Y	RB2014	-	D16BA2N4Z9	-	918	B322
10303*	1/4	115	4.3	1.35	48Y	920L, GF2024	RSP1441A	8000, 3618	4701, 4730	808	B303, B206
10305*	1/3	115	5.8	1.35	48Y	922L, RB2034	-	8100, PD6004	-	922	B305, B207
10307*	1/2	115	7.7	1.25	48Y	GF2054	RSP3451A	8200, PD6006	4708, 4733	-	B307
10309*	3/4	115	11.4	1.00	56	F680, F681	-	4115	-	-	4338
10300	1/6	115	3.6	1.35	48Y	917L	-	D16B2N4Z9	-	-	B300
10302	1/4	115	4.3	1.35	48Y	919L	-	DB14B2N4Z	-	919	B302
10304	1/3	115	5.8	1.35	48Y	921L, RB2034L	-	D13B2N4Z9	-	921	B304
10306	1/2	115	5.8	1.35	48Y	-	-	D12C2J49	-	-	B306

* Automatic Thermal Overload Protection

Fan & Blower Motors, Capacitor Start



Ball Bearing

Features:

- Single speed, capacitor start
- 48/56 frame mounting holes
- Heavy gauge steel construction frame and base
- 5/8" Dia. with keyway
- Extended thru bolts

Specifications:

- Class "B" insulation
- Single phase, 60 Hz
- Continuous duty
- Automatic thermal overload protection, as noted
- Dripproof
- cULus



1725 RPM - Reversible - Dripproof

MARS NO.	HP	VOLTS	AMPS	S.F.	NEMA FRAME	COMPETITOR CROSS REFERENCE						
						AO Smith/ Century	Baldor	Emerson/ US Motors	Fasco	Leeson	Magnetek	Marathon
10313*	1/4	115/208-230	5.0/2.4-2.5	1.35	48YZ	C196L	RL1203A	D12CPA2P49	-	100109.00	C196	B313
10315*	1/3	115/208-230	5.4/2.6-2.7	1.35	48Z	RBF1034A	-	180	-	-	-	B315
10317*	1/2	115/208-230	8.0/4.1-4.0	1.25	56	BK1054, C412V1	-	D12CPA2PH9	D6084	100011.00	-	B317
10319*	3/4	115/208-230	10.0/5.2-5.0	1.25	56	C426V1, RB1074A	RL1307A	1893	-	100012.00	-	B319
10321*	1	115/208-230	14.4/7.2-7.2	1.00	56	C523V1	RL1310A	D1CPA2PH9	D6088	110007.00	-	4688
10322	1/2	115/208-230	9.2/4.2-4.6	1.25	56	-	-	D12CP2PH9	-	-	-	B1316
10323	3/4	115/208-230	10.0/6.2-5.8	1.25	56	C666	-	D34CP2PH9	-	100016.00	C666	B318
10324	1	115/208-230	14/6.9-7.0	1.15	56	C524	-	D1CP2PH9	-	-	-	C235

* Automatic Thermal Overload Protection



Outdoor Condenser Fan Motors

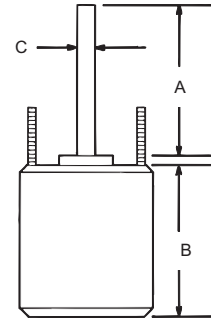


Features:

- All angle, sleeve or ball bearing
- Rheem mounting holes w/screws installed
- Water slinger on shaft
- Thru bolt or band mounting
- Capacitor requirement noted on motor label
- Double full flattened shaft

Specifications:

- Class "B" insulation
- Single phase, 60 Hertz
- Thermal overload protected
- Fan duty, continuous, air over
- Totally enclosed
- 36 inch leads
- UL Recognized



Reversible Rotation - Single Speed

MARS NO.	HP	VOLTS	AMPS	CAP REQUIRED	ENCL.	BRG.	DIMENSIONS		
							A	B	C
1075 RPM									
10725	1/8	208-230	0.72	5/370	TEAO	Sleeve	6.50	4.12	1/2
10727	1/6	208-230	0.90	5/370	TEAO	Sleeve	6.50	4.23	1/2
10726	1/5	208-230	1.17	5/370	TEAO	Sleeve	6.50	4.12	1/2
10728	1/4	208-230	1.8	5/370	TEAO	Sleeve	6.50	4.23	1/2
10729	1/3	208-230	2.4	7.5/370	TEAO	Sleeve	6.50	5.23	1/2
10730	1/2	208-230	3.5	10/370	TEAO	Sleeve	6.50	5.73	1/2
10731	3/4	208-230	4.7	10/370	TEAO	Ball	6.50	6.23	1/2
825 RPM									
10411	1/8	208-230	0.80	5/370	TEAO	Sleeve	6.50	4.13	1/2
10403	1/6	208-230	1.0	5/370	TEAO	Sleeve	6.50	4.23	1/2
10412	1/5	208-230	1.3	5/370	TEAO	Sleeve	6.50	4.40	1/2
10404	1/4	208-230	2.2	5/370	TEAO	Sleeve	6.50	4.48	1/2
10405	1/3	208-230	1.9	7.5/370	TEAO	Sleeve	6.50	5.23	1/2
10746	1/2	208-230	2.8	12.5/370	TEAO	Sleeve	6.50	5.70	1/2



Outdoor Condenser Fan Motors

Ball Bearing

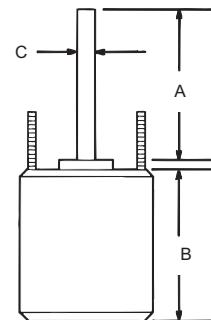


Features:

- All angle, ball bearing
- Rheem mounting holes w/screws installed
- Water slinger on shaft
- Thru-bolt or band mounting
- Capacitor requirement noted on motor label
- Extra set of nuts & star washers on mounting studs
- Double full flattened shaft

Specifications:

- Class "B" insulation
- Single phase, 60 hertz
- Thermal overload protected
- Totally enclosed
- 36 inch leads
- UL Recognized



Reversible Rotation – Single Speed

MARS NO.	HP	VOLTS	AMPS	RPM	CAP REQ.	DIMENSIONS		
						A	B	C
1075 RPM								
10732	1/6	208-230	0.90	1075	5/370	6.50	4.13	1/2
10733	1/4	208-230	1.8	1075	5/370	6.50	4.25	1/2
10734	1/3	208-230	2.4	1075	7.5/370	6.50	5.10	1/2
10735	1/2	208-230	3.5	1075	10/370	6.50	5.70	1/2
10736	3/4	208-230	5.2	1075	10/370	6.50	5.11	1/2
825 RPM								
10203	1/6	208-230	1.0	825	5/370	5.50	4.10	1/2
10204	1/4	208-230	2.2	825	5/370	5.50	4.40	1/2
10205	1/3	208-230	1.9	825	7.5/370	5.50	5.10	1/2
10747	1/2	208-230	2.8	825	12.5/370	6.50	5.70	1/2



Motors



Multi-Horsepower Condenser Fan Motors

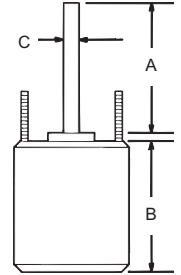
Ball Bearing

Features:

- Rheem mounting holes w/screws installed
- Thru bolt or band mounting
- Water slinger on shaft
- Air conditioning or heat pump duty

Specifications:

- Class "B" insulation
- Single phase, 60 Hz
- Thermal overload protected
- UL Recognized



The Wiz

MARS NO.	HP	ROT	RPM/SP.	VOLTS	ENCL.	BRG.	DIMENSIONS			LEAD LENGTHS
							A	B	C	
10458	1/6 - 1/3	Rev	1075	208-230	TEAO	Ball	6.50	3.82	1/2	36"
10459	1/8 - 1/3	Rev	825	208-230	TEAO	Ball	6.50	5.48	1/2	36"
10465	1/6 - 1/3	Rev	1075/2	208-230	TEAO	Ball	5.00	4.73	1/2	38"
10468	1/5 - 1/2	Rev	1075/2	208-230	TEAO	Ball	5.00	5.48	1/2	38"
10469	1/6 - 1/3	Rev	825/2	208-230	TEAO	Ball	5.00	5.48	1/2	42"



Super-Fit™ Multi-Horsepower Condenser 42 Frame Fan Motors

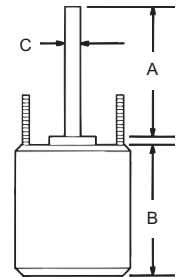
Ball Bearing

Features:

- Super-Fit™ mounting holes for Trane 4.33, 4.42 and 4.62 bolt circle mounting. Includes self threading screws.
- All angle mount, ball bearing. • Reversible rotation
- Multi-HP. • Capacitor requirement noted on motor label
- 1/2 inch dia. flatted shaft. • Totally enclosed

Specifications:

- Class "B" insulation. • 42 frame
- Single phase, 60 Hz
- Continuous air over
- Thermal overload protected. • Continuous duty
- 36 inch leads • UL Recognized



Reversible Rotation – Single Speed

MARS NO.	HP	VOLTS	AMPS	RMP	CAP	ENCL.	BEARING	DIMENSIONS		
								A	B	C
10722	1/8, 1/10, 1/12	208-230	0.75	1075	5/370	TEAO	Ball	3.00	4.13	1/2
10723	1/4, 1/5, 1/6	208-230	1.5	1075	7.5/370	TEAO	Ball	3.00	4.72	1/2
10724	1/4, 1/5, 1/6	208-230	1.35	1625	5/370	TEAO	Ball	3.00	4.60	1/2



Outdoor Condenser Fan Motors - Shaft Up Only

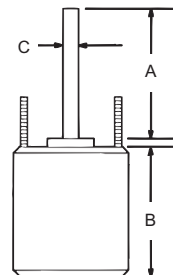
MARS outdoor condenser fan motors are designed for shaft up only used in condenser fan and heat pump units requiring vertical shaft up positioning with "belly band" or extended clamp screw mounting.

Features:

- Rheem mounting holes w/screws installed
- Reversible rotation
- Water slinger on shaft
- Full flatted six inch shaft length
- Capacitor requirement noted on motor label

Specifications:

- Class "B" insulation
- Single phase, 60/50 Hertz
- Automatic thermal overload protected
- Fan duty, continuous, air over
- 36 inch leads
- Lead end endshield open construction
- UL Recognized



1075 RPM - Shaft-Up - Single Speed - Sleeve Bearings

MARS NO.	HP	VOLTS	AMPS	ROTATION	CAP REQUIRED	DIMENSIONS		
						A	B	C
10327	1/6	208-230	0.9	REV	5/370	6.0	4.15	1/2
10328	1/4	208-230	1.8	REV	5/370	6.0	4.15	1/2
10329	1/3	208-230	2.4	REV	7.5/370	6.0	5.11	1/2
10330	1/2	208-230	3.5	REV	10/370	6.0	5.70	1/2
10331	3/4	208-230	5.2	REV	10/370	6.0	6.09	1/2





Outdoor Condenser Fan Motors

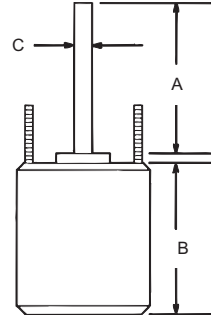
Ball Bearing - 70°C

Features:

- All angle
- Rheem mounting holes w/screws installed
- Trane 4.33 bolt circle mounting holes with self tapping screws
- Thru bolt or band mounting
- Water slinger on shaft
- Capacitor requirement noted on motor label
- Extra set of nuts on mounting studs

Specifications:

- Class "B" insulation
- Single phase, 60 Hertz
- 70°C/158°F
- Thermal overload protected
- Fan duty, continuous, air over
- Totally enclosed
- 36 inch leads
- UL Recognized



Reversible Rotation – Single Speed

MARS NO.	HP	VOLTS	AMPS	CAP REQUIRED	ENCL.	DIMENSIONS		
						A	B	C
1075 RPM								
20727	1/6	208-230	0.90	5/370	TEAO	6.50	4.25	1/2
20728	1/4	208-230	1.8	5/370	TEAO	6.50	4.72	1/2
20729	1/3	208-230	2.4	7.5/370	TEAO	6.50	5.24	1/2
20730	1/2	208-230	3.5	10/370	TEAO	6.50	5.91	1/2
20731	3/4	208-230	5.2	10/370	TEAO	6.50	5.90	1/2
825 RPM								
20402	1/8	208-230	0.75	5/370	TEAO	6.50	4.30	1/2
20403	1/6	208-230	1.0	5/370	TEAO	6.50	4.52	1/2
20404	1/4	208-230	2.2	5/370	TEAO	6.50	4.92	1/2
20405	1/3	208-230	1.9	7.5/370	TEAO	6.50	5.31	1/2
20746	1/2	208-230	2.8	12.5/370	TEAO	7.00	5.90	1/2



460V Outdoor Condenser Fan Motors – Shaft Up Only

Ball Bearing - 70°C

Features:

- Shaft up only
- Rheem mounting holes w/screws installed
- Extended thru bolt or band mounting
- Capacitor requirement noted on motor label

Specifications:

- Single Phase, 60 Hz
- 70°C, 158°F
- Thermal overload protected
- Totally enclosed
- UL Recognized

Reversible Rotation

MARS NO.	HP	VOLTS	AMPS	CAP REQUIRED	A	DIMENSIONS			LEAD LENGTHS
						B	C		
1075 RPM - Single Speed									
20846	1/4	460	0.65	7.5/440	6.50	4.60	1/2		36"
20847	1/3	460	0.90	7.5/440	6.50	5.50	1/2		36"
20848	1/2	460	1.3	10/440	6.50	5.90	1/2		36"
20849	3/4	460	2.05	10/440	7.00	6.20	1/2		47"

Motors



MARS 460V Outdoor Condenser Fan Motors

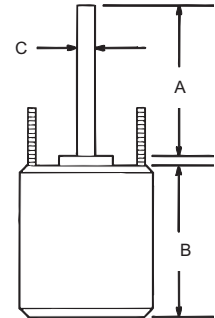
Ball Bearing - 70°C

Features:

- All angle
- Rheem mounting holes w/screws installed
- Trane 4.33 bolt circle mounting holes and self tapping screws
- Extended thru bolt or band mounting and extra nuts
- Capacitor requirement noted on motor label
- Water slinger on shaft
- End shield drain holes w/plugs

Specifications:

- Single phase, 60 Hz
- 70°C/158°F
- Thermal overload protected
- Totally enclosed
- 48 inch leads, Multi-HP
- 36 inch leads
- UL Recognized



Reversible Rotation

MARS NO.	HP	VOLTS	AMPS	RPM	CAP REQUIRED	DIMENSIONS		
						A	B	C
1075 RPM – Single Speed								
20835	1/6	460	0.48	1075	5/440	6.50	4.32	1/2
20836	1/4	460	0.65	1075	7.5/440	6.50	4.52	1/2
20837	1/3	460	0.90	1075	7.5/440	6.50	5.38	1/2
20838	1/2	460	1.3	1075	10/440	6.50	5.86	1/2
20842	3/4	460	2.0	1075	10/440	6.50	6.29	1/2
825 RPM – Single Speed								
20859 *	1/6	460	0.53	825	5/440	3.22	4.52	1/2
20880	1/4	460	0.90	825	5/440	6.50	5.00	1/2
20881	1/3	460	1.0	825	7.5/440	6.50	5.62	1/2
20882	1/2	460	1.55	825	10/440	6.50	6.34	1/2
1075 RPM – Multi-HP								
20478	1/3 - 1/6	460	1.2	1075	7.5/370	6.50	4.90	1/2
20479	1/2 - 1/5	460	1.5	1075	10/370	6.50	5.60	1/2
20480	1/2 - 1/6	460	1.46	1075	10/440	5.50	5.70	1/2
20481	3/4 - 1/4	460	2.12	1075	15/440	5.50	6.48	1/2

One-On-One™ Replacement Motor for AO Smith ORM4688BF

MARS NO.	HP	ROT	RPM/SPDS	VOLTS	AMPS	CAP REQUIRED	ENCL.	BRG.	DIMENSIONS		
									A	B	C
20884	1/8, 1/6, 1/5, 1/4, 1/3	REV	825/1	460	1.0	7.5/370	TEAO	Ball	6.50	5.3	1/2

* CW Rotation-opposite shaft end



Multi-Horsepower Condenser Fan Motors

Ball Bearing - 70°C

Features:

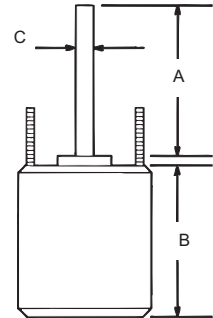
- All angle
- Rheem shell mounting holes with screws installed
- Trane 4.33 bolt circle mounting holes with self tapping screws
- Thru bolt or band mounting
- Water slinger on shaft
- Extra set of nuts on mounting studs

Specifications:

- Class "B" insulation
- Single phase, 60 Hertz
- 70°C/158°F
- 36 inch leads
- Thermal overload protected
- Fan duty, continuous, air over
- Totally enclosed
- UL Recognized

20458 & 20459:

- Short shell length
- Just ONE capacitor rating per motor
- Quick & Simple 2 wire installation



Multi-Horsepower – Reversible Rotation

The Wiz

MARS NO.	HP	RPM/SPDS	VOLTS	AMPS	CAP REQUIRED	ENCL.	BRG.	DIMENSIONS		
								A	B	C
20458	1/6-1/3	1075	208-230	2.8	7.5/370	TEAO	Ball	6.50	5.00	1/2
20459	1/8-1/3	825	208-230	1.9	10/370	TEAO	Ball	6.50	5.71	1/2
20465	1/6-1/3	1075/2	208-230	2.5	5/7.5/370	TEAO	Ball	7.00	5.16	1/2
20468	1/5-1/2	1075/2	208-230	3.6	10/12.5/370	TEAO	Ball	5.00	6.10	1/2
20469	1/6-1/3	825/2	208-230	1.9	10/7.5/370	TEAO	Ball	5.00	6.10	1/2

One-On-One™ Replacement Motor for Emerson 5462H

MARS NO.	HP	ROT	RPM/SPDS	VOLTS	AMPS	CAP REQUIRED	ENCL.	BRG.	DIMENSIONS		
									A	B	C
20462	1/3, 1/4, 1/5, 1/6	REV	1075/2	208-230	2.0	5/7.5/370	TEAO	Ball	5.00	4.91	1/2

One-On-One™ Replacement Motor for Emerson 5482H

MARS NO.	HP	ROT	RPM/SPDS	VOLTS	AMPS	CAP REQUIRED	ENCL.	BRG.	DIMENSIONS		
									A	B	C
20471	1/4, 1/3, 1/2, 3/4	REV	1075/2	208-230	4.2/3.6	15/440	TEAO	Ball	5.5	6.5	1/2

One-On-One™ Replacement Motor for AO Smith FE6003F

MARS NO.	HP	ROT	RPM/SPDS	VOLTS	AMPS	CAP REQUIRED	ENCL.	BRG.	DIMENSIONS		
									A	B	C
20470	1/4, 1/2	REV	825/2	208-230	2.6	10/12.5/440	TEAO	Ball	6.5	6.1	1/2

One-On-One™ Replacement Motor for AO Smith ORM5854BF

MARS NO.	HP	ROT	RPM/SPDS	VOLTS	AMPS	CAP REQUIRED	ENCL.	BRG.	DIMENSIONS		
									A	B	C
20457	1/8, 1/10, 1/12, 1/15	REV	825/1	208-230	0.75	5/440	TEAO	Ball	6.5	4.7	1/2

One-On-One™ Replacement Motor for AO Smith ORM5454BF

MARS NO.	HP	ROT	RPM/SPDS	VOLTS	AMPS	CAP REQUIRED	ENCL.	BRG.	DIMENSIONS		
									A	B	C
20463	1/8 - 1/15	REV	1075/1	208-230	0.65	5/440	TEAO	Ball	6.5	4.4	1/2

Motors



Outdoor Condenser Fan Motors

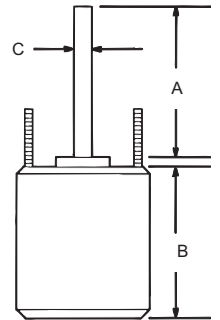
Ball Bearing - 80°C

Features:

- All angle
- Rheem mounting holes w/screws installed
- Trane 4.33 bolt circle mounting holes with self tapping screws
- Thru bolt or belly band mounting
- Water slinger on shaft
- Capacitor requirement noted on motor label
- Extra set of nuts on mounting studs

Specifications:

- Class "F" insulation
- Single phase, 60 Hz
- 80°C (176°F) max ambient
- Thermal overload protection
- Fan duty, continuous, air over
- Totally enclosed
- 36 inch leads
- UL Recognized



Reversible Rotation

MARS NO.	HP	VOLTS	AMPS	RPM	CAP REQUIRED	ENCL.	DIMENSIONS		
							A	B	C
1075 RPM									
20797	1/6	208-230	0.90	1075	5/370	TEAO	6.50	4.25	1/2
20798	1/4	208-230	1.8	1075	5/370	TEAO	6.50	4.72	1/2
20799	1/3	208-230	2.4	1075	7.5/370	TEAO	6.50	5.24	1/2
20790	1/2	208-230	2.6	1075	10/370	TEAO	6.50	5.91	1/2
20791	3/4	208-230	4.5	1075	10/370	TEAO	6.50	6.50	1/2
825 RPM									
20492	1/8	208-230	0.75	825	5/370	TEAO	6.50	4.41	1/2
20493	1/6	208-230	0.80	825	5/370	TEAO	6.50	4.53	1/2
20494	1/4	208-230	1.8	825	5/370	TEAO	6.50	4.92	1/2
20495	1/3	208-230	1.9	825	7.5/370	TEAO	6.50	5.31	1/2
20796	1/2	208-230	2.8	825	12.5/370	TEAO	7.00	6.42	1/2



MARS 460V Outdoor Condenser Fan Motors

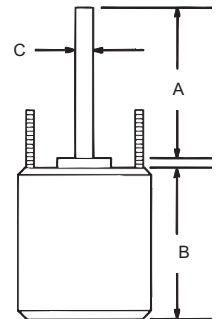
Ball Bearing - 80°C

Features:

- All angle
- Rheem mounting holes w/screws installed
- Trane 4.33 bolt circle mounting holes with self tapping screws
- Thru bolt or belly band mounting
- Water slinger on shaft
- Capacitor requirement noted on motor label
- Extra set of nuts on mounting studs

Specifications:

- Class "F" insulation
- Single phase, 60 Hz
- 80°C (176°F) max ambient
- Thermal overload protection
- Fan duty, continuous, air over
- Totally enclosed
- 36 inch leads
- UL Recognized



Reversible Rotation

MARS NO.	HP	VOLTS	AMPS	RPM	CAP REQUIRED	ENCL.	DIMENSIONS		
							A	B	C
1075 RPM									
20895	1/6	460	0.48	1075	5/440	TEAO	6.50	4.41	1/2
20896	1/4	460	0.65	1075	7.5/440	TEAO	6.50	4.61	1/2
20897	1/3	460	0.90	1075	7.5/440	TEAO	6.50	5.51	1/2
20898	1/2	460	1.3	1075	10/440	TEAO	6.50	5.91	1/2
20892	3/4	460	2.0	1075	10/440	TEAO	6.50	6.30	1/2
825 RPM									
20899	1/6	460	0.53	825	5/440	TEAO	3.22	4.53	1/2
20890	1/4	460	0.90	825	5/440	TEAO	6.50	5.12	1/2
20891	1/3	460	1.0	825	7.5/440	TEAO	6.50	5.71	1/2

Easy As 1-2-3

MARS 3 Wire Condenser Fan Motors

Ball Bearing

MARS 3 Wire condenser fan motors replicate OEM wiring for condenser fan motors speeding installation and saving time.

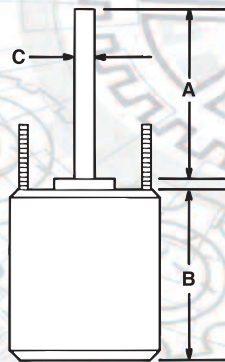
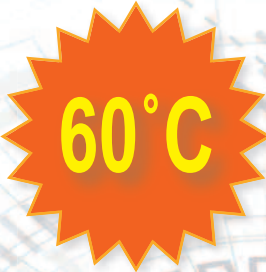
Condenser fan motors are designed for either shaft-up or shaft-down applications. End shields are enclosed for weather protection. A weep hole is provided in each end shield to allow condensate to drain. All of these motors are suitable for air conditioning or heat pump applications.

Features:

- All angle, ball bearing
- Rheem mounting holes w/screws installed
- Water slinger on shaft
- Thru bolt or band mounting
- Capacitor requirement noted on motor label
- Double full flatted shaft

Specifications:

- Class "B" insulation
- Single phase, 60 Hertz
- Thermal overload protected
- Fan duty, continuous, air over
- Totally enclosed
- 36 inch leads
- UL Recognized



5 1/2 inch dia.

Reversible Rotation – Single Speed – 3 Wire

MARS NO.	HP	VOLTS	AMPS	CAP REQ.	ENCL.	BRG.	DIMENSIONS		
							A	B	C
1075 RPM									
23728	1/4	208-230	1.8	5/370	TEAO	Sleeve	6.50	4.23	1/2
23729	1/3	208-230	2.4	7.5/370	TEAO	Sleeve	6.50	5.23	1/2

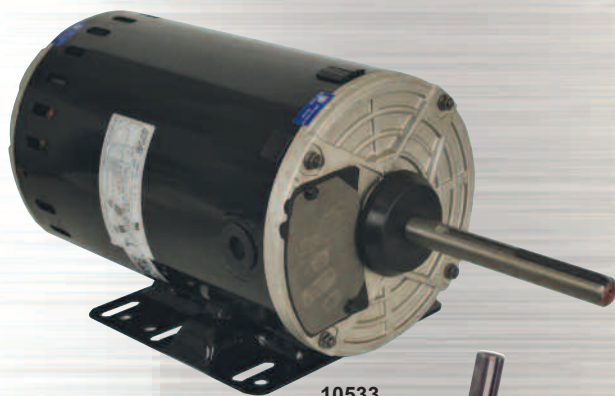
Commercial Motor Promotion

Peak Performers

MARS Commercial Motors

Promotion Conditions & Terms

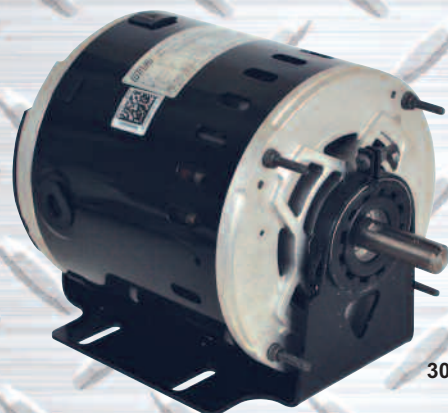
1. Minimum Order 12 Pieces, Mix & Match
 2. Prepaid Freight
 3. Net 120 Payment Terms
- ORDERS MUST BE MARKED "PEAK Performers"
 - Non-qualifying products may not be added to "PEAK Performers" orders
 - "PEAK Performers" orders must be received by 12-31-18
 - Not Combinable with ESP or any other MARS Offer or Promotion



10533



10500



30317

MARS NO.	DESCRIPTION	MARATHON
10500	1/2HP 1140RPM 208-230/460 CF	X500
10501	3/4HP 1140RPM 208-230/460 CF	X501
10502	1HP 1140RPM 208-230/460 CF	X502
10503	1-1/2HP 1140RPM 208-230/460	X503
10507	1HP 850RPM 208-230/460 CF	X507
10509	2HP 1140RPM 208-230/460 CF	X509
10513	1HP 1140RPM 208-230/460 CF	X513
10522	1HP 1140RPM 575/3/60 CF	X522
10523	1-1/2HP 1140RPM 208-230/460V	X523
10524	1-1/2HP 1140RPM 575/3/60 CF	X524
10526	2HP 1140RPM 575/3/60 CF	X526
10527	1HP 850RPM 575/3/60 CF	X527
10528	1HP 850RPM 208-230/460 CF	X528
10529	1/2HP 850RPM 208-230/460 CF	X529
10530	1-1/2HP 850RPM 208-230/460 CF	X530
10531	1-1/2HP 850RPM 208-230/460 CF	X531
10533	1/2HP 1140RPM 208-230/460 CF	X533
30317	1/2HP 1725RPM 208-230/460V	K1408
30319	3/4HP 1725RPM 208-230/460V	K1410
30321	1HP 1725RPM 208-230/460V	K1412
30323	1-1/2HP 1725RPM 208-230/460V	K1415
30325	2HP 1725RPM 208-230/460V	K1418

See MARS Rep. For Additional Qualifying Motors!



Toll Free (800) 445-4155 • Fax (631) 348-7160
www.marsdelivers.com

WARNING:
Cancer and Reproductive Harm
www.P65Warnings.ca.gov

QM POWER

Q-SYNC Smart Synchronous Refrigeration Motors Reinventing the High Efficiency Motor

What is Q-SYNC motor technology?

Q-SYNC synchronous motors offer a high efficiency alternative to ECM technology without the complexity of ECM electronics. Like ECM technology, the AC synchronous motor is constructed with permanent magnets on the rotor. However, unlike ECM the AC synchronous motor is not driven continuously by a digitally generated sinewave. Q-SYNC uses electronics to sync the motor to the 60Hz AC sinewave that powers the motor, and then the electronics turn off.

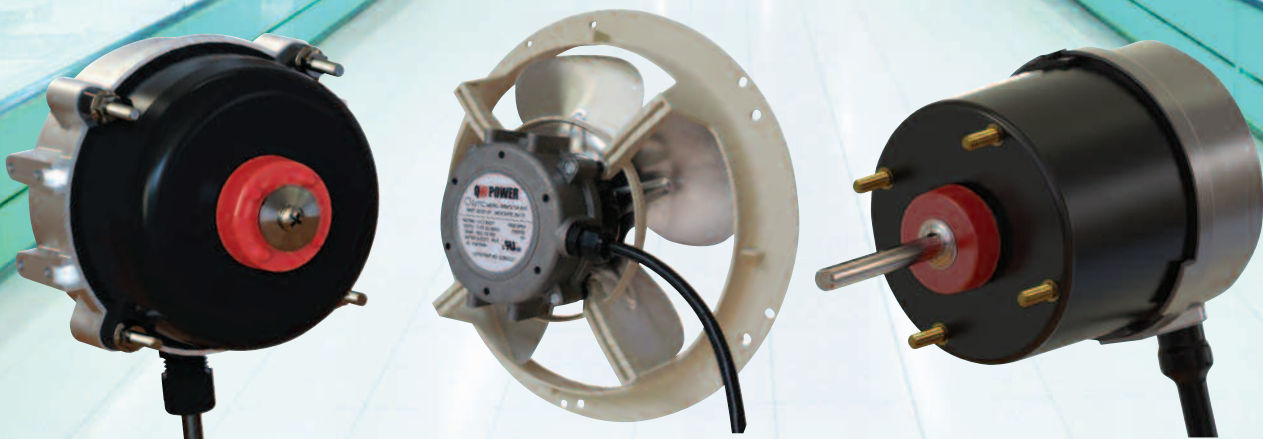
What are the benefits of Q-SYNC motor technology?


- No AC to DC power conversions as required in ECMs means the motor uses less energy
- Power consuming circuit drops out after reaching synchronous speed means the electronics are subjected to much less wear and tear which would normally shorten the life of other electronically controlled motors
- Speed does not fluctuate with fluctuations in voltage means CFM is more controlled than other motors
- 71% less watts than standard shaded pole motor technology
- 2 year warranty

MARS NO.	DESCRIPTION	VOLTS	AMPS	POWER	RPM	ROT
05950*	Case Motor	115	0.15	6-12W	1800	CWLE
05750	Fanpack	115	0.15	6-12W	1800	CWLE
05970**	3.3 Walk-in Motor	115	0.56	1/15HP	1800	CCWLE
05971**	3.3 Walk-in Motor	115	0.56	1/15HP	1800	CWLE

* Use with 8" 25° fan

** Use with 12" 18° fan or 10" 22° fan



 **WARNING:**
Cancer and Reproductive Harm
www.P65Warnings.ca.gov

Toll Free (800) 445-4155 • Fax (631) 348-7160
www.marsdelivers.com



Motors



10228

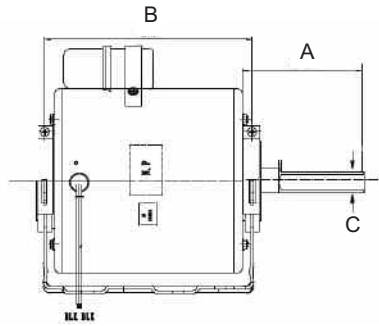


10229

OEM Direct Replacement Motors For Copeland

Specifications:

- Class "B" insulation
- 50/60 Hz
- Single phase
- Single speed
- Thermal overload protected
- Continuous air over

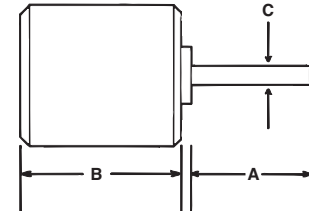


Cross Reference

MARS No.	Copeland	GE/Genteq	US Motors/Emerson	Packard
10227	050-0108-00	5KCP32KG2598, 5KCP32KG175 5KCP32KG221	6127, K55HXECE2645	
10228	050-0251-00, 998-0251-000		6128, K55HSJNG-2974	40251
10229	050-0250-00, 950-0250-00	03242, 5KCP39EG755S	6129, K55HXJZJ-3126	40250
10264	050-0238-00	5KCP-39GG357S	6124, K55BZY-1439	
10265	050-0265-00		K55PGP5104	40265

MARS NO.	HP	VOLTS	ROTATION OSE	AMPS	RPM	CAP INCLUDED	ENCLOSURE	DIMENSIONS		
								A	B	C
10227	1/3	230	CW	2.2	1625	4MFD/370V	TEAO	1.75	5.87	1/2
10228	1/6	208-230	CW	1.1	1550	3MFD/370V	OAO	3.07	3.69	1/2
10229	1/4	208-230	CW	1.5	1625	5MFD/370V	OAO	3.07	4.32	1/2
10264	1/4	230	CW	2.1	1550	5MFD/370V	ODP	3.00	4.2	1/2
10265	1/6	208-230	Rev	1.1	1550	3MFD/370V	OAO	3.00	3.73	1/2

One-On-One™ Direct Replacement Motors



5 1/2 inch diam., totally enclosed, ball bearing, capacitor required 5 MFD @ 370V (MARS No. 12005, 12905), CW OSE

Replaces: Carrier HC33GE233

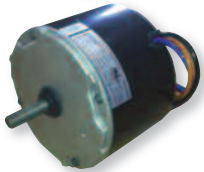
MARS NO.	HP	VOLTS	RPM/SPEEDS	ROT OSE	AMPS	DIMENSIONS		
						A	B	C
10234	1/10	208/230	1100/1	CW	0.77	1.8	3.8	1/2



5 1/2 inch diam., totally enclosed, ball bearing, capacitor required 5 MFD @ 370V (MARS No. 12005, 12905), CCW OSE

Replaces: Goodman 0131M00019P

MARS NO.	HP	VOLTS	RPM/SPEEDS	ROT OSE	AMPS	DIMENSIONS		
						A	B	C
10230	1/4	208/230	1100/1	CCW	1.26	3	4.1	1/2



5 1/2 inch diam., totally enclosed, ball bearing, capacitor required 5 MFD @ 370V (MARS No. 12005, 12905), CCW OSE

Replaces: Goodman 0131M00060

MARS NO.	HP	VOLTS	RPM/SPEEDS	ROT OSE	AMPS	DIMENSIONS		
						A	B	C
10232	1/6	208/230	810/1	CCW	1.1	3	4.1	1/2



5 1/2 inch diam. Totally enclosed, ball bearing, capacitor required 5 MFD @ 370V (MARS No. 12005, 12905), CCW OSE

Replaces: Goodman G3911

MARS NO.	HP	VOLTS	RPM/SPEEDS	ROT OSE	AMPS	DIMENSIONS		
						A	B	C
03242	1/6	208/230	1075/1	CCW	1.0	1	2.75	1/2



5 1/2 inch diam., totally enclosed, ball bearing, capacitor required 5 MFD @ 370V (MARS No. 12005, 12905), CCW OSE

Replaces: Goodman 0131M00294

MARS NO.	HP	VOLTS	RPM/SPEEDS	ROT OSE	AMPS	DIMENSIONS		
						A	B	C
10233	1/8	208/230	1050/1	CCW	0.70	2.5	4.1	1/2



5 1/2 inch diam., totally enclosed, ball bearing, capacitor required 20 MFD @ 370V (MARS No. 12014, 12914), CW OSE

Replaces: Goodman 0131F00022

MARS NO.	HP	VOLTS	RPM/SPEEDS	ROT OSE	AMPS	DIMENSIONS		
						A	B	C
10594	1/2	115	1130/4	CW	8.1	4	5.1	1/2



5 1/2 inch diam., totally enclosed, ball bearing, capacitor required, 5 MFD @ 440V (MARS No. 12029, 12929, 14029), CCW OSE

Replaces: For use with Coleman and Evcon Equipment

MARS NO.	HP	VOLTS	RPM/SPEEDS	ROT OSE	AMPS	DIMENSIONS		
						A	B	C
10570	1/3	575	850/1	CCW	0.66	2.5	6.6	1/2



5 1/2 inch diam., totally enclosed, ball bearing, capacitor required, 10 MFD @ 440V (MARS No. 12032, 12932, 14032), CCW OSE

Replaces: For use with Coleman and Evcon Equipment

MARS NO.	HP	VOLTS	RPM/SPEEDS	ROT OSE	AMPS	DIMENSIONS		
						A	B	C
10571	3/4	575	1100/1	CCW	1.35	3.5	5.7	1/2

Motors

ECM 44 Frame For 51 Frame Commercial Refrigeration Applications

EM & S has developed an electronically commutated motor that can serve as a drop-in replacement of conventional vertical discharge 51 frame motors in 2-to-25 watt applications.



1/4-20 threaded shaft

05443

05444



Application Notes:

- + Motor must be vertical shaft up to 60° from vertical for proper condensate drainage.
- + 05443 will replace most existing 9-12 watt unit bearing motors using 8-9" fans with 20-37 degree pitch blades.
- + 05444 will replace most unit bearing motors using 8-9" fans with 25-37 degree pitch blades.

Features:

- + high efficiency
- + improved reliability
- + energy savings of 66 percent over a wide speed range
- + specially designed labyrinth seal keeps water out of the motor during high pressure washing
- + low operating temperature
- + individually boxed
- + accessories included with each motor; (1) resilient fan silencer, (1) speed nut, (3) thread forming screws, (1) rainshield

ECM Technology

Features:

- Output 4-12W, 13-23W
- ~66% peak efficiency
- Speed regulated within +/-6%
- 1 Discrete speed
- 51fr Unit bearing motor; cast iron frame
- 1/4"-20 threaded shaft
- Universal 5 hole mount
- Side pedestal mounting feet (2 sets standard)



Featuring:

Special Wide Temperature Range Lubrication System

Mounting Holes:

Universal Evaporator Mount

- Standard 3-Hole
- Custom Hussmann Style

Universal Condenser Mount

- Dual Mounting Pads



MARS NO.	APPLICATION	OUTPUT WATTS	VOLTS	ROT	RPM	MARS PACK
00650	Evaporator/Condenser	4-12	115	CW	1550	1
00651	Evaporator/Condenser	4-12	230	CW	1550	1
00652	Evaporator/Condenser (90° lyall plug)	4-12	115	CW	1550	1
00654	Evaporator/Condenser	13-23	115	CW	1550	1
00655	Evaporator/Condenser	13-23	230	CW	1550	1
00656	Evaporator/Condenser	13-23	115	CCW	1550	1
00657	Evaporator/Condenser	13-23	230	CCW	1550	1

The Only Reach-In Refrigeration Motor That You Will Ever Need...

AZURE®
Commercial Refrigeration
Watt (Reach-In) Motor

Programmable to any custom
OEM speed including Hussmann

Ball Bearing

MARS ECM watt motor is a Drop in replacement for most OEM / ECM / PSC and standard shaded pole commercial refrigeration evaporator and condenser fan motors. Capable of replacing most 1550 RPM case motors 4 - 25W for reach-in cooler/freezer applications. The microprocessor sets power output to match the fan load ensuring correct CFM and maximum efficiency in every installation. Automatically senses and adapts to the system voltage (115/230V). Optional wireless programmer kit allows the speed to be set anywhere between 600 RPM and 2000 RPM, and the rotation to be reversed making the Azure® motor the most versatile case motor available.

Specifications:

- Submersible - IP67
- Operating temperature range: -40° to 131°F
- Self adjusting from 4 to 25 Watts
- Estimated Energy Savings: \$33/year (\$46/year total)²
- 5 hole universal rear mount
- Wirelessly Programmable to any OEM speed



See us on
You Tube



08505
 Wireless Programmer Kit



Azure Wireless
 Programmer Kit



Programming the
 Azure Watt Motor

Cross Reference

MARS No.	Replaces	MARS	Century Motor	Hussmann	Morrill	US Motors Rescue
10891	All standard watt motors: 4 - 25 W	10890	9207F2, 9208F2, 9211, 9212, 9213	4410547	5R999	EC5411D, EC5412D

MARS NO.	WATTS OUTPUT	VOLTS	RPM	ROTATION	LEAD LENGTH
10891	4 - 25	115/230	1550 ¹	CWLE ³	13"

Accessories for Azure® Watt Motor

MARS NO.	DESCRIPTION
08505	Wireless Programmer Kit; Requires Azure Programmer App and Smart Device (sold separately) for 10891

¹ 1550 default; adjustable 600-2000 RPM with optional wireless programmer kit (MARS No. 08505)

² Estimated energy savings based on replacement of a 9W shaded pole evaporator fan motor with Azure® at \$0.11/kWh. \$33 savings is based solely on the reduction of power consumption. An additional savings of approximately 40% will result from the reduction of the refrigeration load due to Azure®'s lower operating temperature.

³ CWLE default; reversible with optional wireless programmer kit (MARS No.08505)



The Only Walk-In Refrigeration Motor That You Will Ever Need...

AZURE[®]
Digi-Motor[®]

3.3" Commercial Refrigeration Evaporator Fan Motor

Ball Bearing

Wirelessly Programmable and Convertible To 2-Speed



Programming the Azure Motor

Azure[®] is an electronically controlled 3.3" motor (ECM) that replaces all 1/15 - 1/25 HP, 115/230V commercial refrigeration evaporator fan motors for walk-in cooler/freezer applications. All Azure[®] 3.3 motors automatically adapt to the voltage 115V/230V and load 1/15 - 1/25 HP. MARS no. 10852 can be converted to a 2-speed motor for enhanced energy savings using the wireless programming module. This motor does not require the use of an external controller. Optional thermistors are connected directly to the motor to provide high speed and low speed run signals. In addition, this motor can be wirelessly adjusted to operate 600-2000 RPM and can replace virtually any OEM ECM.

Specifications:

- Temperature Operating Range: -40° to 131°F
- Multi horsepower, self-adjusting from 1/15 to 1/25HP
- 1 or 2 speed operation (1550/800 RPM)
- No capacitor required
- Estimated Energy Savings: \$65/year (\$91/year total)²
- Wirelessly Programmable to any OEM speed (600-2000 RPM)¹



08515 Thermistor Kit

Cross Reference

MARS No.	Replaces	Bohn	Regal Beloit/Morrill	Wellington	US Motors
10853	Standard 3.3" motors	-	5100, 5200	-	-
10854	Standard 3.3" motors	-	5101, 5201	-	-
10850	Standard 3.3" motors	-	5100, 5105, 5106, 5101, 5111, 5200, 5201, 5205, 5206, 5211	ECR 85/95	EC5404D, EC5405D
10852	Standard 3.3" motors	5008S, 5008T	5100, 5101, 5102, 5105, 5106, 5111, 5200, 5201, 5205, 5206, 5211	-	EC5404D, EC5405D

MARS NO.	HP	VOLTS	RPM	SPEEDS	WIRELESSLY PROGRAMMABLE	ROTATION
10853	1/15 - 1/25	115/230	1550	1	NO	CWLE
10854	1/15 - 1/25	115/230	1550	1	NO	CCWLE
10850	1/15 - 1/25	115/230	1550	1	NO	Rev
10852	1/15 - 1/25	115/230	1550 ¹	1 or 2 ²	YES	CCWLE ³

¹ 1550 default; adjustable 600-2000 RPM with optional wireless programmer kit (MARS No. 08505)
² 2-speeds attainable with optional wireless programmer (MARS No. 08505) and optional thermistor kit (MARS No. 08515)
³ CCWLE default; reversible with optional wireless programmer (MARS No. 08505)

Accessories for Azure[®] Refrigeration Motor

MARS NO.	DESCRIPTION
08515	Thermistor Kit for 2-Speed Operation (2/PK) for 10852; Controls up to 5 Motors



Walk-In Cooler Evaporator EC Fan Motors

Features:

- 3.3 Interchangeability
- Shaft down and Horizontal mounting
- Cast Iron unit bearing Construction
- Front mount studs
- Rotation: shaft end

Specifications:

- Universal, fits most 1/15HP and smaller applications, 1550 RPM
- 230 Volt 60/50 Hz ; 115 Volt 60 Hz.
- 22.5" Leads with EMF/Lyall Plug
- 4 10-32 Hex Flange nuts are supplied with each motor
- UL and cUL recognized



1550 RPM - Single Speed

MARS NO.	APPLICATIONS	HP	VOLTS	AMPS	ROT SE	RPM	MARS PACK
00211*	Evaporator/Condenser	1/15	115	1.25	CW	1550	1
00212*	Evaporator/Condenser	1/15	115	1.25	CCW	1550	1
00221*	Evaporator/Condenser	1/15	230	0.77	CW	1550	1
00222*	Evaporator/Condenser	1/15	230	0.77	CCW	1550	1

* Shaft and leads are on the same end

ECplus™ Wide Range Universal Refrigeration Motor



Applications:

- Light commercial ventilation units
- Bottle coolers
- Vending machines
- Small walk in coolers
- Display/refrigeration display units
- Freezer cabinets
- Ice machines



Features:

- **Double side mounting pads**
- **5-hole universal real mount**
- Peak efficiency greater than 65%
- Incorporating 'soft start' feature ensures quiet ramp up to desired speed which assists in eliminating vibration noise & increasing life expectancy of integrated electronics
- One model covers 1 Watt to 22 Watt shaft power
- Support 6", 7", 8" & 10" (maximum 10" 28 degree pitch) fan blades

Specifications:

- Thermally protected with electronic overload protection
- IP55 Rating
- 1550 RPM
- Approvals UL & CUL

MARS NO.	DESCRIPTION
08030*	8" Plastic Basket for ECplus™ Motor

* Sold separately

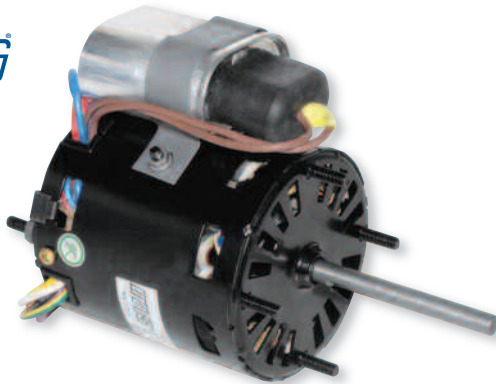
1550 RPM

MARS NO.	WATTS	VOLTS	MAX AMPS	ROT OSE
05620	1 - 22 Watts	120	0.42	CW



SEE THIS MOTOR IN ACTION!
Scan for video.

Motors



MARS 3.3" Commercial Refrigeration Multi-Horsepower Motors

These motors replace hundreds of OEM shaded pole evaporator fan motors found in Bohn, Nutone, Chandler, Larkin, Kramer, Climate Control, McQuay, Heatcraft and reduce truck stock costs.

These PSC type motors deliver more power and lower amp draw compared to shaded pole.

Features:

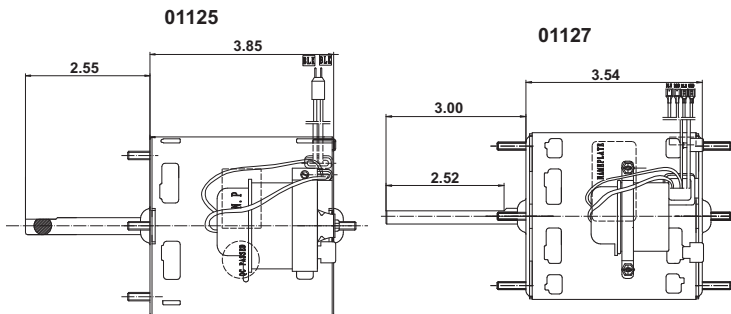
- Sleeve bearing
- Mounting - extended thru-bolt with nuts
- Low temp lubricant
- Capacitor included
- Open ventilation

Specifications:

- Class "B" insulation
- 60 Hz
- Thermal overload protected
- Single speed

Replaces 12 Motor Ratings:

1/12HP	CW or CCW	115V or 230V
1/15HP	CW or CCW	115V or 230V
1/20HP	CW or CCW	115V or 230V



Cross Reference

MARS No.	Century/AO Smith	US Motors/Emerson	Fasco	GE/Genteq	OEM	Packard
01125	9720A	9656, 8658, 9664	7190-0442, D1125		253005101, 25309101, 7071061, 55034LS, 5034L, 5008SS and 50085 S58-486, 5008TS, 5008T, 5034MS and 5034M S58-776	41125
01127	9721	9650, 9651, 9652, 9653, 9656, 9662, 9664	D1101, D1103, D1122, D1123, D1124, D1125, D1126, D1127, D1152, D1154, PD1125, 7163-3371 7190-0442, 7190-2084 7190-2255, 7190-2285 7190-2969	5KSM59ES2001 5KSM59JSK143S 5KSM59JS5036S 5KSM59LS2262AS	25308601, 25309101, 2531194, 2531195 7071061	49101

1550 RPM

MARS NO.	HP	VOLTS	ROTATION	AMPS	CAP INCLUDED	SHAFT LENGTH AND DIAMETER
01125	1/12, 1/15, 1/18	208-230	CCW LE	0.56/0.50	4 MFD 370V	2.55 x 5/16
01127	1/12, 1/15, 1/20	115/230	REV	1.1/0.60	7.5 MFD 370V	3.00 x 5/16

Commercial Refrigeration Fan Motors

These shaded pole motors are widely used in the HVAC & Refrigeration industry. These motors are suitable for all angle operation and have multiple mounting features. Commercial Refrigeration Fan motors are used in industrial and commercial refrigeration for condensing and evaporating units, ventilating units, freezers, walk-in and reach-in coolers, food and beverage coolers and many other fan duty applications.

Features:

- Single speed
- Output 4 to 34 watts
- Totally enclosed
- Continuous air over
- 1 year Limited warranty

Specifications:

- Impedance or thermally protected
- All angle, sleeve bearing
- Class B insulation
- 50/60 Hz
- Standard operating temperature: -40°F to 104°F (-40°C to 40°C)
- 3 Tapped holes @ 120° & 2 @ 180°
- Single side pad mounting
- 4 Shaft end studs
- UL Recognized, CSA and CE Certified



MARS NO.	MFG STOCK NO.	WATTS	ROT. S.E	HP	VOLTS	AMPS	PROT.	BLADE DIA. IN.	BLADE PITCH	AIR FLOW (CFM) @ 0 IN. STATIC	AIR FLOW (CFM) @ .1 IN. STATIC
00801	EC4W115	4	CCW	1/185	115	0.36	Imp	6	28	137	69
								7	22	141	72
00805	EC6W115	6	CCW	1/125	115	0.41	Imp	7	31	206	119
00806	EC6W230				230	0.20		8	28	306	220
00807	EC9W115	9	CCW	1/83	115	0.58	Therm	8	22	262	186
00808	EC9W230				230	0.35		9	28	325	240
					28	418		301			
00809	EC16W115	18	CCW	1/47	115	0.89	Therm	9	28	476	395
00810	EC16W230	16			230	0.50		10	31	490	410
					28	610		470			
00817	EC34W115	34	CCW	1/20	115	1.6	Therm	12	19	796	697
00818	EC34W230				230	0.80		28	1024	785	
00891	Mounting Adaptor kit NU condenser motor										

ECM High Efficiency Motors

Elco Hi Efficiency ECM motors are drop in replacements of the traditional front mount shaded pole motors. They use all the same accessories with no extra work for an easy and hassle-free installation. These are built with ECM technology to run more efficiently, reduced CO2 emissions, longer life expectancy and quieter than the normal PSC shaded pole motors. They offer better airflow control than a PSC, up to 70%, 4 to 5 times more efficient than a regular shaded pole motor. Higher efficiency means cooler motor operation and reduced heat delivered to the refrigeration cycle, for a combined energy saving advantage and improved refrigeration quality. The ECM Series offers IP65 moisture protection grade, one of the highest in the industry. These motors are designed to satisfy the growing demands of energy savings.

Features:

- Life expectancy of 60,000+ hrs.
- Protection rating - IP65 moisture protection grade
- Totally enclose. • All angle
- Continuous air over
- Long life sealed ball bearings

Specifications:

- Working temp: -40°C +55°C • 50/60 Hz
- M4 Studs on 3.72" B.C. for shroud/guard
- UL recognized & CE Certified

Cross Reference:

EDA12153UC0147	Arneg Canada & US	34410013, 34410009, 24681010
EDA15253UC0176	Hill Phoenix	P078449H
EDA10153UC0182	Hill Phoenix	P079441C, P066237A



MARS NO.	MFG NO.	WATTS	HP	VOLTS	RPM	ROT. S.E	AMPS	A DIM	CORD LENGTH	TERM. PLUG
00851	EDA12153UC0147	12	1/63	115	1450	CCW	0.18	3.61	14"	3 Pin 90°
00852	EDA15253UC0176	15	1/50	115	1600	CCW	0.22	4.00	16"	2 Pin 90°
00858	EDA10153UC0182	10	1/75	115	1550	CCW	0.19	3.61	16"	2 Pin 90°

Motors

58 Series Fan Pack Replacement ECM Fan/Motor System

Complete Air Moving Package!

Consists of Motor, all metal Fan & all metal Shroud

Increased Durability

Optimize your performance with the ECplus motor!



MARS NO.	REPLACES RPM	MARS PACK
05470	1340 RPM 58mm fan pack	1
05471	1470 RPM 58mm fan pack	1
05472	1650 RPM 58mm fan pack	1

Broad Ocean ECM Tester (Digimotor Test Tool)

Save time and money with the Broad Ocean ECM Motor Tester.

- Isolates any issues to either the motor or the control board and the control wiring

NOTE: This tool is for Broad Ocean OEM Digi-Motors only.
This tool is not compatible with Azure.

08503

Kit Contents:

DESCRIPTION	QTY
Broad Ocean ECM Tool	1
Type A test Connector (Furnaces, AH & Packaged)	1
Type B Test Connector (Packaged Units)	1
Type C Test Connector (Air Handlers)	1
Type D Test Connector (Outdoor Condenser Fan Motors)	1



51 Frame Unit Bearing Cast Iron & Aluminum Motors

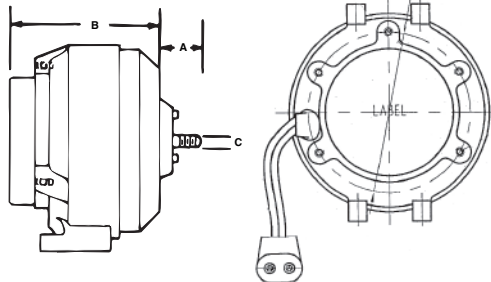
MARS 51 frame motors are used on refrigerators, freezers, food & beverage coolers, vending machines, display cases, and many other fan duty applications.

Features:

- Cast iron or aluminum construction
- Packed with vibration dampener, speed nut & screws
- Shaded pole, single phase
- Fan duty, continuous, air over
- Impedance protected
- Class "A" insulation
- 60/50 Hertz



Dual Pad Mounting
Lyall Plug



MARS NO.	WATTS	ROT OSE	VOLTS	AMPS	LEAD LENGTH	DIMENSIONS		
						A	B	C
Cast Iron 1550 RPM—1/4-20 Threaded Shaft - Dual Pad Mounting - Lyall Plug								
05211 ⁽¹⁾	4	CW	115	0.33	24"	0.66	2.64	1/4
05212 ⁽¹⁾	4	CCW	115	0.33	24"	0.66	2.64	1/4
05221 ⁽¹⁾	4	CW	230	0.19	24"	0.66	2.64	1/4
05222 ⁽¹⁾	4	CCW	230	0.19	24"	0.66	2.64	1/4
05311	6	CW	115	0.46	24"	0.66	3.14	1/4
05312	6	CCW	115	0.46	24"	0.66	3.14	1/4
05411	9	CW	115	0.62	24"	0.66	3.14	1/4
05412	9	CCW	115	0.62	24"	0.66	3.14	1/4
05421	9	CW	230	0.33	24"	0.66	3.14	1/4
05422	9	CCW	230	0.33	24"	0.66	3.14	1/4
05811 ⁽²⁾	16	CW	115	0.95	24"	0.66	3.34	1/4
05812 ⁽²⁾	16	CCW	115	0.95	24"	0.66	3.34	1/4
05821 ⁽²⁾	16	CW	230	0.48	24"	0.66	3.34	1/4
05822 ⁽²⁾	16	CCW	230	0.48	24"	0.66	3.34	1/4

(1) Class A Insulation (2) Automatic Reset Overload Protection



Watt Motors

JARD cast iron Watt Motors are used on refrigerators, freezers, food & beverage coolers, vending machines, display cases, and many other fan duty applications.

Features:

- Cast iron construction
- Universal mount
- Mounting screws included
- Individually boxed

Specifications:

- Class "A" insulation
- UL Recognized



JARD NO.	WATTS	VOLTS	ROTATION
15109	2	115	CW
15119*	9	115	CW
15211	4	115	CW
15212	4	115	CCW
15221	4	230	CW
15222	4	230	CCW
15311	6	115	CW
15312	6	115	CCW
15411	9	115	CW
15412	9	115	CCW
15421	9	230	CW
15422	9	230	CCW
15811	16	115	CW
15812	16	115	CCW
15821	16	230	CW
15822	16	230	CCW

* Note: 13" lead with lyall plug

Motors

Condenser Fan Motors

JARD replacement condenser fan motors are designed for residential and light commercial HVAC/R applications suitable for either vertical shaft-up or shaft-down mounting. Shell and end shields are enclosed for weather protection. A weep hole is provided in each end shield to allow condensate to drain.



Features:

- All angle, sleeve or ball bearing
- Reversible rotation
- Thru bolt or band mounting

Specifications:

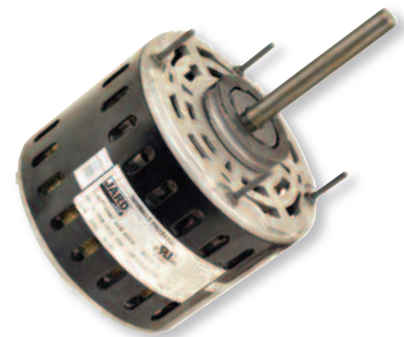
- Class "B" insulation
- Single phase, 60 Hz
- Thermal overload protected
- Fan duty, continuous air over
- UL Recognized

Reversible Rotation - Single Speed

MARS NO.	HP	VOLTS	CAP REQUIRED	ENCL.	BRG.
1075 RPM					
22727	1/6	208-230	5/370	TEAO	Sleeve
22728	1/4	208-230	5/370	TEAO	Sleeve
22729	1/3	208-230	7.5/370	TEAO	Sleeve
22730	1/2	208-230	10/370	TEAO	Sleeve
22731	3/4	208-230	10/370	TEAO	Ball
825 RPM					
22403	1/6	208-230	5/370	TEAO	Sleeve
22404	1/4	208-230	5/370	TEAO	Sleeve
22405	1/3	208-230	7.5/370	TEAO	Sleeve
22746	1/2	208-230	12.5/370	TEAO	Sleeve

Direct Drive Blower Motors

JARD direct drive blower motors are ideal for use in commercial and residential furnaces and air handlers. All models are three speed standard efficiency and are electrically reversible.



Features:

- All angle sleeve bearing
- 3 speeds
- 1/2 inch extended thru bolts
- 2-1/4 inch resilient rings

Specifications:

- Class "B" insulation
- Single phase, 60 Hertz
- Thermal overload protected
- Fan duty, continuous, air over
- Open construction
- UL Recognized

1075 RPM - Three Speed - Reversible Rotation

MARS NO.	HP	ROT	VOLTS	CAP REQUIRED	ENCL.	BRG.
22583	1/4	Rev	115	5/370	OAO	Sleeve
22584	1/4	Rev	208-230	5/370	OAO	Sleeve
22585	1/3	Rev	115	5/370	OAO	Sleeve
22586	1/3	Rev	208-230	5/370	OAO	Sleeve
22587	1/2	Rev	115	10/370	OAO	Sleeve
22588	1/2	Rev	208-230	7.5/370	OAO	Sleeve
22589	3/4	Rev	115	15/370	OAO	Sleeve
22590	3/4	Rev	208-230	10/370	OAO	Sleeve

Multi-Horsepower Direct Drive Motors

JARD multi-horsepower direct drive blower motors are used in residential and commercial furnaces, exhaust fans, and other air handling equipment. Four models cover both 115 and 208-230 volt applications from 1/6 through 3/4 HP.

Features:

- Reversible rotation
- 2-1/4 inch resilient rings

Specifications:

- Class "B" insulation
- Single phase, 60 Hz
- Thermal overload protected
- UL Recognized



1075 RPM - Four Speed - Reversible Rotation

MARS NO.	HP	ROT	VOLTS	ENCL.	BRG.
22463	1/6 - 1/2	Rev	115	OAO	Sleeve
22464	1/6 - 1/2	Rev	208-230	OAO	Sleeve
22466	1/5 - 3/4	Rev	115	OAO	Ball
22467	1/5 - 3/4	Rev	208-230	OAO	Ball

Multi-Horsepower Condenser Fan Motors

JARD multi-horsepower condenser fan motors are designed for either shaft up or shaft down applications. All motors are suitable for air conditioning or heat pump applications.

Features:

- Thru bolt or band mounting
- Water slinger on shaft
- Air conditioning or heat pump duty

Specifications:

- Class "B" insulation
- Single phase, 60 Hz
- Thermal overload protected
- UL Recognized



Ball Bearing

MARS NO.	HP	ROT	RPM/SPEED	VOLTS	ENCL.	BRG.
22458	1/6 - 1/3	Rev	1075	208-230	TEAO	Ball
22459	1/8 - 1/3	Rev	825	208-230	TEAO	Ball
22465	1/6 - 1/3	Rev	1075/2	208-230	TEAO	Ball
22468	1/8 - 1/2	Rev	1075/2	208-230	TEAO	Ball
22469	1/6 - 1/3	Rev	825/2	208-230	TEAO	Ball

Motors



STOCK REPLACEMENT PRODUCTS

D1127 Multi-Horsepower Commercial Refrigeration Evaporator Motor

• **Replaces 12 Motor Ratings:**

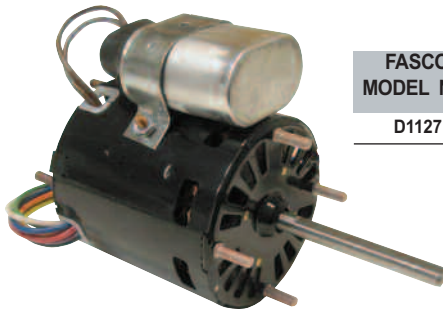
- | | | |
|------------------|------------------|------------------|
| 1/12 HP 115V CW | 1/15 HP 115V CW | 1/20 HP 115V CW |
| 1/12 HP 115V CCW | 1/15 HP 115V CCW | 1/20 HP 115V CCW |
| 1/12 HP 230V CW | 1/15 HP 230V CW | 1/20 HP 230V CW |
| 1/12 HP 230V CCW | 1/15 HP 230V CCW | 1/20 HP 230V CCW |

- **Reversible**
- **Dual Voltage**
- **High Efficiency Energy-Saving PSC**

Great Truck Stock!

Fasco Motor Quick Facts:

- 3.3" Diameter
- Open Ventilation
- *Energy Efficient* PSC
- Sleeve Bearing
- Thermally Protected
- UL Recognized
- CSA Certified



FASCO MODEL NO.	HP	VOLTS	RPM	AMPS	SWITCH	SPEEDS	SHAFT	LUBRICANT
D1127	1/12, 1/15, 1/20	115/230	1550	1.1/0.6	No	1	5/16" X 3"	Low Temp Oil

Can Be Applied In Hundreds Of...
Bohn, Larkin, McQuay, Kramer & Other OEM Applications

3.3 Dia. Evaporator Coil & Fan Motors Drop-In Replacements



FIG. A
D1124, D1126



FIG. B
D1125



FIG. C
D1101, D1103

Sleeve Bearing

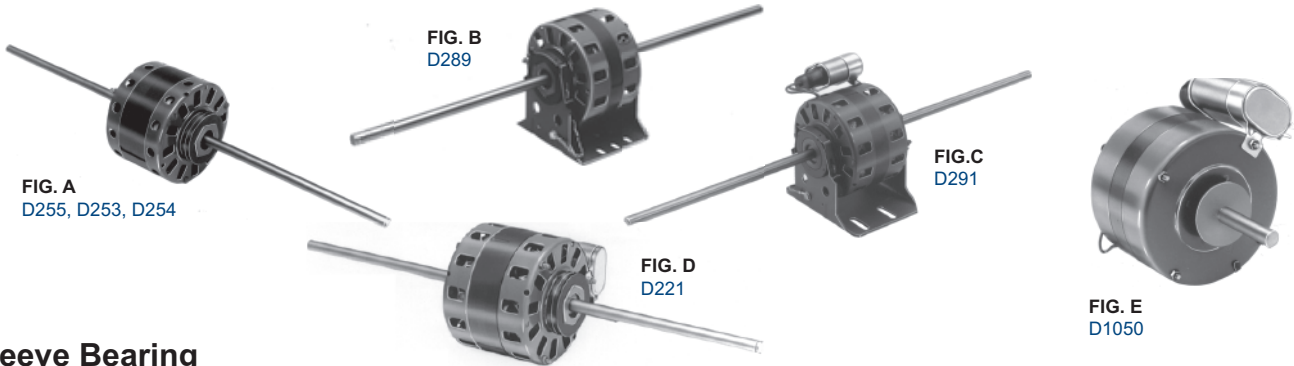
FASCO MODEL NO.	TYPE	HP	VOLTS	RPM	SPD.	AMPS	ENCLOSURE	ROT.	SHAFT DIM.	FIG.	NOTES
BOHN											
D1124	SP	1/20	115	1550	1	2.1	Open Ventilated	CW	5/16 X 3	A	33
D1126	SP	1/15	230	1550	1	1.1	Open Ventilated	CW	5/16 X 3	A	33
D1125	PSC	1/12	208-230	1550	1	0.4	Open Ventilated	CW	5/16 X 2-5/8	B	20,34
LARKIN COIL											
D1101	SP	1/20	115	1500	1	1.9	Open Ventilated	CCW	5/16 X 2-1/4	C	33
D1103	SP	1/20	208-230	1500	1	1.15	Open Ventilated	CCW	5/16 X 2-1/4	C	33

NOTES: 20: 4M 370V Capacitor included 33: Shell Turbo 68, low temp. oil (-40°F) 34: Bolt Circle = 3.15"

See the MARS Catalog - #98605 for complete offering of Fasco Motors.

FASCO STOCK REPLACEMENT PRODUCTS

Fan Coil A/C & Heating Unit Motors



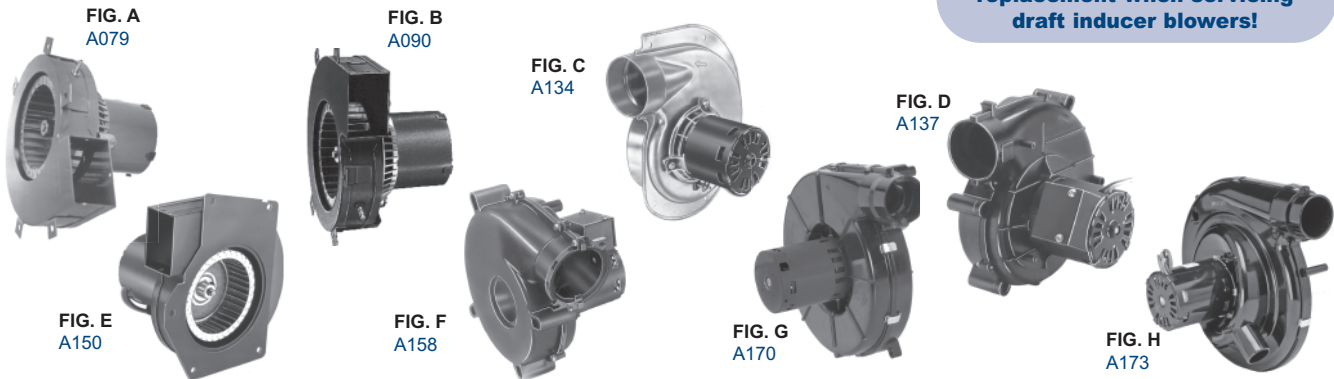
Sleeve Bearing

FASCO MODEL NO.	TYPE	HP	VOLTS	RPM	SPD.	AMPS	ENCLOSURE	ROT.	SHAFT DIM.	FIG.	NOTES
D255	SP	1/25-1/50-1/80	115	1050	3	1.5-1-.6	Open Ventilated	DS	7-1/2 X 1/2 X 7-1/2	A	
D253	SP	1/20-1/40-1/50	115	1050	3	2.2-1.4-.8	Open Ventilated	DS	7-1/2 X 1/2 X 7-1/2	A	
D254	SP	1/15 -1/30-1/50	115	1050	3	2.1-1.3-.8	Open Ventilated	DS	8 X 3/8 X 8	A	
D289	SP	1/10-1/30-1/40-1/45-1/50	115	1050	5	3.6-1.6-1.2-.8-.6	Open Ventilated	DS	10-3/4 X 1/2 X 10-3/4	B	
D291	PSC	1/10-1/15 - 1/25-1/40	115	1050	4	2.2-1.4 - 1-.7	Open Ventilated	DS	10-3/4 X 1/2 X 10-3/4	C	20
D221	PSC	1/6-1/8-1/10-1/12	115	1550	4	3.2-1.7 - 1.3-1	Open Ventilated	DS	8 X 1/2 X 8	D	70
D1050	PSC	1/8	230	1550	1	1.1	Totally Enclosed	CW	1/2 X 3	E	

NOTES: 20: 4M 370V Capacitor included 70: 5M 370V Capacitor included

Draft Inducer Blower Assemblies

Always use an exact replacement when servicing draft inducer blowers!



FASCO MODEL NO	TYPE	VOLTS	SPD	AMPS	CROSS REF	FIG. NOTES
A079	SP	115	1	1.1	Rheem Ruud 74-70-21496-03-01, 74-70-21504-03-04 Goodman B1859000, 7021-6804, JA1M106, JA1M137 Trane B1W24, WG94X167	A
A090	SP	115	1	1.1	Rheem 70-21496-01, 7021-5239, JA1M102, 7021-5715	B
A134	SP	115	1	1.5	InterCity Products 7021-9335, 7021-8735, 7021-9499, 7021-8736, 7021-7700	C
A137	PSC	115	1	0.7	York International 7062-2442, 7062-3484, 024-25057-000	D 133
A150	SP	208-230	1	0.5	Trane 7021-7833, 7021-8928	E
A158	PSC	115	1	4.5	Amana 7062-3151, 7062-3703	F 133
A170	SP	115	1	2.3	InterCity Products 7021-10299, 7021-10702	G
A173	PSC	115	1	0.8	InterCity Products 7062-4785, Alltemp (ROTOM) 7062-4832	H

NOTES: 133: 4M 250V Capacitor included

See the MARS Motor Catalog - #98605 for complete offering of Fasco Motors.

STOCK REPLACEMENT PRODUCTS

FASCO

Motors

marathon[®] electric STOCK REPLACEMENT PRODUCTS

Single Phase Commercial Condenser Fan Motors

Where Used Air conditioning and heat pump condensers

Single Phase, PSC, Totally Enclosed, Air Over

MODEL NO.	HP	RPM	VOLTAGE	FRAME	COMPETITOR CROSS REFERENCE				
					AO SMITH/CENTURY	FASCO	GE	MAGNETEK	US MOTORS
X467	1/4	1625/1	208-230	48Y	-	-	-	-	1890
X412	1/4	1075/1	208-230	48Y	FSE1026SV1	D909	3728	176	1860
X413	1/3	1075/1	208-230	48Y	FSE1036SV1	D908	3729	175	1861

Thru-Bolt, Shaft-Up or Horizontal

MODEL NO.	HP	RPM	VOLTAGE	FRAME	COMPETITOR CROSS REFERENCE	
					AO SMITH/CENTURY	US MOTORS
X400	1/2	1075/1	460	48Y	FEH1056SF	3738
X099	3/4	1075/1	460	48Y	FH1076	3742



marathon[®] electric

Three Phase Commercial Condenser Fan Motors

Where Used Air conditioning and heat pump condensers

Air Over, Rigid Base

MODEL NO.	HP	RPM	VOLTAGE	FRAME	COMPETITOR CROSS REFERENCE			
					AO SMITH/CENTURY	BALDOR	LEESON	US MOTORS
X529	1/2	850	208-230/460	56HZ	-	-	-	
X513	1	1140	208-230/460	56HZ	H1050A	CFM3156A	111147	1820H
X528	1	850	208-230/460	56HZ	H1053A	-	-	1833H
X523	1 1/2	1140	208-230/460	56HZ	H1051A	CFM3166A	111148	1821H
X531	1 1/2	850	208-230/460	56HZ	H1054A	-	-	1100
X525	2	1140	208-230/460	56HZ	H698	-	-	1822H



Belly Band, Resilient Mount

MODEL NO.	HP	RPM	VOLTAGE	FRAME	COMPETITOR CROSS REFERENCE					
					AO SMITH/CENTURY	BALDOR	FASCO	LEESON	MAGNETEK	US MOTORS
X502	1	1140	200-230/460	56Y	H1050A	CFM3156A	D6608	-	H667	1818H
X507	1	850	200-230/460	56Y	H1053A	-	-	-	H686	1828V
X503	1 1/2	1140	200-230/460	56Y	H1051A	CFM3166A	D6610	111148	H767	1819H
X530	1 1/2	850	200-230/460	56Y	H1054A	-	-	-	-	1832H
X509	2	1140	200-230/460	56Y	H698	-	-	-	H698	8987V



MARS NO.	MODEL NO.	DESCRIPTION	COMPETITOR CROSS REFERENCE				
			AO SMITH/CENTURY	MAGNETEK	FASCO	EMERSON	BALDOR

Condenser Shaft Up, Reversing Plug, 1075/1, OAO Ball

X214	048A11O1525	1/3HP 208-230V Sleeve	FS1036S	O501*	D748	6880	---
X400	048A11O2017	1/2HP 460V					

* No reversing plug

Condenser Shaft Down, Reversing Plug, 1075/1, OAO Sleeve

X216	048A11O1097	1/5HP 208-230V	619	---	D743	---	---
------	-------------	----------------	-----	-----	------	-----	-----

Condenser Fan, 3 Phase, OAO Ball

X500	056T11O5300	1/2HP 200-230/460V	FC3056	H564	---	---	---
X501	056T11O5301	3/4HP 200-230/460V	FC3076	H567	---	1817	CFM3146A
X502	056T11O5302	1HP 200-230/460V	FC3106	H667	D6608	1818	CFM3156A
X507	056T8O5302	1HP 200-230/460V	---	H686	---	1828	---
X503	056T11O5303	1.5HP 200-230/460V	FC3156	H767	D6610	1819	CFM3166A
X509	056T11O5304	2HP 208-230/460V	---	H698	---	---	---

Condenser All Angle, TEAO, Reversing Plug, 1075/1, T-bolts

X411	048A11T2008	1/6HP 208-230V Ball	FSE1016SV1	184*	D917	1859	---
X467	048A11T87	1/4HP 208-230V Sleeve 1625/1	---	---	---	---	---
X412	048A11TB569	1/4HP 208-230V Sleeve	FSE1026SV1	176*	D909	1860	---
X456	048A11T578	1/4HP 460V Ball	---	---	---	---	---
X413	048A11TB529	1/3HP 208-230V Sleeve	FSE1036SV1	175*	D908	1861	---
X457	048A11T579	1/3HP 460V Ball	---	---	---	---	---
X458	048A11T580	1/2HP 460V Ball	---	---	---	---	---
X459	048A11T581	3/4HP 460V Ball	---	---	---	---	---

* No reversing plug



Open

Enclosed





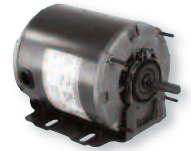
STOCK REPLACEMENT PRODUCTS

Single Phase Fan and Blower Motors

Where Used Medium and large building ventilation systems, commercial kitchen exhaust systems

Split Phase, Dripproof, Resilient Base

MODEL NO.	HP	RPM	VOLTAGE	FRAME	PROTECTION	COMPETITOR CROSS REFERENCE			
						AO SMITH/CENTURY	BALDOR	MAGNETEK	US MOTORS
B206	1/4	1725	115	48YZ	AUTO	GF2024	RSP1441A	802	8000
B302	1/4	1725	115	48YZ	NONE	919L	-	919	D14B2N4Z
B303	1/4	1725	115	48YZ	AUTO	GF2024	RSP1441A	808	3618
B207	1/3	1725	115	48YZ	AUTO	GF2034	RSP2442A	805	8100
B305	1/3	1725	115	48YZ	AUTO	RB2034	-	922	PD6004
4706	1/3	1725	115	48YZ	AUTO	GF2034	RSP2442A	-	8100
B306	1/2	1725	115	48YZ	NONE	-	-	-	D12C2J49
B307	1/2	1725	115	48YZ	AUTO	GF2054	RSP3451A	-	PD6006
B208	1/2	1725	115	48YZ	AUTO	GF2054	RSP3451A	811	8200



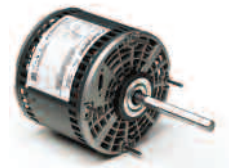
Capacitor Start, Dripproof, Resilient Base

MODEL NO.	HP	RPM	VOLTAGE	FRAME	PROTECTION	COMPETITOR CROSS REFERENCE					US MOTORS
						AO SMITH/CENTURY	BALDOR	FASCO	LEESON	MAGNETEK	
B313	1/4	1725	115/208-230	48YZ	AUTO	C196L	RL1203A	-	100109.00	C196	D14CA2P4Z9
B315	1/3	1725	115/208-230	48YZ	AUTO	RBF1034A	-	-	-	-	180
B317	1/2	1725	115/208-230	56	AUTO	C412V1	RL1304A	D6084	100011.00	-	D12CA2JH9
B318	3/4	1725	115/208-230	56	NONE	C666	-	-	100016.00	C666	D34C2J9
B319	3/4	1725	115/208-230	56	AUTO	C426V1	RL1307A	D6086	100012.00	-	1893
C1158	1	1725	115/208-230	56	AUTO	C523V1	RL1310A	D6088	110007.00	-	D1CA2JH9
4688	1	1725	115/208-230	56Z	AUTO	C523V1	RL1310A	D6088	110007.00	-	D1CA2JH9



Direct Drive Fan & Blower, Reversing Plug, Sleeve, 1075/3, OAO

MODEL NO.	MODEL NO.	DESCRIPTION	COMPETITOR CROSS REFERENCE				
			AO SMITH/CENTURY	MAGNETEK	FASCO	EMERSON	BALDOR
X000	048A11OB1798	1/4HP 115V	DL1026	O533	D721	1863	---
X001	048A11OB1799	1/4HP 208-230V	D1026	O530	D725	1971	---
X002	048A11OB1769	1/3HP 115V	DL1036	O532	D727	1864	---
X003	048A11OB2042	1/3HP 208-230V	D1036	O529	D723	1972	---
X004	048A11OB1755	1/2HP 115V	DL1056	O531	D701	1865	---
X009	048A110787	3/4HP 115V	DL1076	O678	D726	8904	---
X010	048A1102046	3/4HP 208-230V	D1076	O679	D729	8905	---



Motors

Vertical Outdoor Condenser Fan Motors Shaft-Up/Down



Features:

- Thru bolt or band mounting
- Water slinger on shaft
- Serrated end cap on shaft end only
- Full six inch shaft length with two full flats at 90°

Specifications:

- 60 Hertz
- Single phase
- Overload protected
- Fan duty, continuous, air over
- 26 inch leads
- Totally enclosed, non-ventilated
- Class B insulation



Reversible Rotation

MARS NO.	GE NO. 5KCP39	HP	VOLTS	AMPS	RPM	CAP REQ.
----------	---------------	----	-------	------	-----	----------

825 RPM - Single Speed - All Angle Sleeve Bearings - 8 Pole

03403*	HFAD05S	1/6	208-230	0.90	825	5/370
03404*	JFAD07S	1/4	208-230	1.30	825	7.5/370
03405*	NFAD09S	1/3	208-230	1.80	825	10/370
03746*	TFAD10S	1/2	208-230	2.80	825	20/370

1075 RPM - Single Speed - Standard Efficiency - All Angle Sleeve Bearings - 6 Pole

03727	DGS375S	1/6	208-230	1.00	1075	5/370
03728	FGM599S	1/4	208-230	1.80	1075	5/370
03729	LGS407S	1/3	208-230	2.30	1075	7.5/370
03759	LGT378S	1/3	575	1.10	1075	7.5/370
03730	PGS618S	1/2	208-230	3.50	1075	10/370
03731	SGT039S	3/4	208-230	4.70	1075	10/370

* Heat Shield

PSC Direct Drive Blower Motors

Features:

- All angle sleeve bearings
- 1/2 inch extended thru bolts
- 2-1/4 inch resilient rings plus 4 split rings
- 4 inch long, 1/2 inch diameter shaft



Specifications:

- Single phase, 60/50 Hertz
- Overload protection
- Fan duty, continuous, air over
- Open construction
- 26 inch leads
- Class B insulation

1075 RPM — Reversible Rotation - Standard Efficiency - 6 Pole

MARS NO.	GE NO. 5KCP39	HP	VOLTS	AMPS	CAP REQ.	BASE NO.
----------	---------------	----	-------	------	----------	----------

Three Speed⁽¹⁾

03583 ⁽²⁾	FGN651T	1/4	115	4.2	5/370	08055
03584 ⁽²⁾	FGN652T	1/4	208-230	2.0	5/370	08055
03585 ⁽²⁾	JGN653T	1/3	115	6.2	5/370	08056
03586 ⁽²⁾	JGN654T	1/3	208-230	2.9	5/370	08056
03587 ⁽²⁾	PGN655T	1/2	115	9.0	5/370	08060
03588 ⁽²⁾	NGN656T	1/2	208-230	4.3	5/370	NA
03589 ⁽²⁾	PGN657T	3/4	115	10.3	15/370	08060
03590 ⁽²⁾	PGN658T	3/4	208-230	4.6	10/370	08060
03595 ⁽²⁾	SGL854S	1	115	11.8	20/370	08060
03596 ⁽²⁾	SGL853S	1	208-230	5.59	15/370	08060

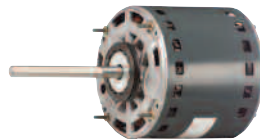
(1) Approximately 150RPM differential between speeds depending on fan load (2) 60 Hz only

(3) Approximately 300RPM differential between speeds depending on fan load

SOS™ Multi-Horsepower Direct Drive Blower Motors

Features:

- Open end shields
- Extended mounting studs
- 2-1/2 inch resilient rings
- Reversible rotation
- All angle sleeve or ball bearings
- Capacitor requirement noted on motor label



Specifications:

- Single phase, 60 Hz
- Overload protection
- Fan duty, continuous air over
- Open construction

1075 RPM Multi-Horsepower Reversible Rotation - 6 Pole

MARS NO.	GE NO. 5KCP39	HP	VOLTS	AMPS
03463	KGV804AS	1/2, 1/3, 1/4, 1/5, 1/6	115	6.2
03464	KGV805AS	1/2, 1/3, 1/4, 1/5, 1/6	208-230	2.7
03466*	SGU363AS	3/4, 1/2, 1/3, 1/4, 1/5	115	8.4
03467*	SGU364AS	3/4, 1/2, 1/3, 1/4, 1/5	208-230	4.2

* Ball Bearing

SOS™ Multi-Horsepower Outdoor Condenser Fan Motors

Features:

- Ball Bearings
- Thru bolt or band mounting
- Rheem mounting capability
- Water slinger on shaft
- Capacitor requirement noted on motor label
- End Shield drain holes w/plug



Specifications:

- Single phase, 60 Hz
- Overload protection
- Fan duty, continuous air over
- Totally enclosed, Non-ventilated
- Class B insulation

Multi-Horsepower, Reversible Rotation

MARS NO.	GE NO. 5KCP39	HP	VOLTS	AMPS
----------	---------------	----	-------	------

1075 RPM - 6 Pole

Wizard 03458	JGU530S	1/3, 1/4, 1/5, 1/6	208-230	2.80
Wizard 03460*	RGU709S	1/2, 1/3, 1/4, 1/5, 1/6	208-230	3.00
03465*	LGU735S	1/3, 1/4, 1/5, 1/6	208-230	2.50
03468*	RGU733S	1/2, 1/3, 1/4, 1/5	208-230	3.10

* Heat Shield

Super-Fit™ 3000 RPM Replacement Motors*

The MARS 90999 Super-Fit™ replacement fan motor is designed to replace virtually any refrigerator evaporator fan motor.

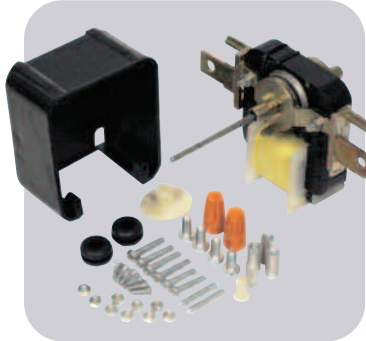
The MARS 90999 motor incorporates a unique new system which duplicates any OEM mounting quickly and easily. The rotor is reversible in the field for either clockwise or counterclockwise rotation.

In addition the MARS 90999 motor has the power to perform in even the largest refrigerators.

The MARS 90999 Super-Fit™ motor comes complete with mounting accessories and hardware. *U.S. Patent

Features:

- Reversible rotation
- Duplicates any OEM motor
- Break-off shaft
- Easy-to-use, fewer parts to assemble than competitive motors
- Stock one motor - save on inventory
- Complete with accessories and instructions



Specifications:

- Electrical rating:
 - 90999, 115V, 50/60 Hertz
 - 90998, 220V, 50/60 Hertz
- Overload protection: impedance protected
- Speed: 3000 RPM
- Shaft: 1/8 inch diameter with adaptors for 3/16 inch and hubless fans

MARS NO.	DESCRIPTION	VOLTS
90999	"Super-Fit" motor with accessories	115V, 50/60 Hz
90998	"Super-Fit" motor with accessories	220V, 50/60 Hz

MARS Super-Fit™ 3.3" Commercial Refrigeration Evaporator Fan and Blower Motors

Application:

Can be used to replace virtually all popular 3.3" dia. commercial refrigeration evaporator fan motors.

Features:

- Adaptable to front or rear mount
- All angle operation
- Specially selected low temp. oil
- Full flatted black oxide shafts
- U.L. and C.S.A. recognized thermal protection



1550 RPM

MARS NO.	HP	VOLTS	AMPS	ROT OLE
09917	1/20	115	1.7	CW
09927	1/20	208/230	0.96	CW

Specifications:

- Single phase, 60 Hertz
- Thermal overload protected
- 12 inch leads

Super-Fit™ 3000 RPM Commercial Replacement Motor*

MARS 90970 Super-Fit™ commercial evaporator fan motor is the most versatile, easy-to-use, heavy-duty replacement evaporator fan motor available.

MARS 90970 is the first motor of this type with a dual voltage coil so you can stock one motor for both 115 volt and 230 volt applications. The unique system of slide locator screws lets you match OEM mountings quickly and easily.

The reversible 90970 features rugged, die cast bearing housings with self-aligning bearings and generous oil reservoir. The break-off shaft has adaptors to fit 1/8, 3/16, 1/4, 5/16 inch bores and hubless fan blades.

Each kit includes: Motor, 5.5" white plastic blade, accessory package.

*U.S. Patent



MARS 90970 Replaces:

ACME MIAMI	GEM	UNI-LINE ROBERT SHAW
750	EM675 EM680	14011
7502	EM675 EM683	14019
780		

Features:

- Dual voltage coil, 110-120/208-240 VAC
- 50/60 Hertz
- Mechanically reversible

Specifications:

- Electrical: 110-120/208-240 VAC; 50/60 Hertz
- Protection: thermal overload protected
- HP: 1/50
- RPM: 3000

3000 RPM – Mechanically Reversible

MARS NO.	HP	AMPS	STACK HT. IN.	SHAFT	VOLTS
90970	1/50	1.33	.75	2.174 X .1875	110-120/208-240

Super-Fit™ 3000 RPM Replacement Motor Kit With Fan Blades

The MARS 90971 Super-Fit™ replacement motor kit with fan blades is designed to provide all the material necessary to replace virtually any existing application that requires a 3/8", 1/2", or 5/8" stack motor.

The motor features a specially designed recirculating oil system for long life.

Each kit includes: MARS Super-Fit™ Motor, hardware plus a 4" diameter fan blade and a 5.5" diameter fan blade.



Features:

- Sleeve bearings
- All angle mount
- UL and CSA recognized
- Impedance protection
- Mechanically reversible
- Recirculating oil system

Specifications:

- Class "A" insulation • 3000 RPM • 60 Hz

3000 RPM – Mechanically Reversible

MARS NO.	HP	VOLTS	AMPS	SHAFT	STACK
90971	1/130	120	0.41	1.42" x 3/16"	5/8"

Cross Reference:

MARS NO.	ACME MIAMI	GEM	UNI-LINE ROBERT SHAW	SUPCO
90971	600	EM670	33-670 (14001)	SM-670
	700			
	710			
	AM-4670			

Heating Products

MARS Heat Pump Risers

Heavy duty composite heat pump risers are available in 2 popular heights in a cost effective 1 piece design as well as a 2 piece terrain adaptable design.

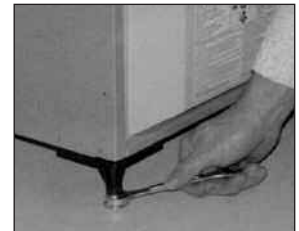
Each riser includes factory installed built mastic patches on the top and bottom to absorb vibration and reduce noise.

MARS NO.	DESCRIPTION	MARS PACK
93600	3" 1 Piece Heat Pump Riser	48
93601	6" 1 Piece Heat Pump Riser	24
93602	3" 2 Piece Heat Pump Riser	32
93603	6" 2 Piece Heat Pump Riser	16
93604	4" Riser Extension	16



MARS Easy Leveler™ Adjustable Furnace Legs

- Includes 4 easy leveler legs & sheet metal screws
- Designed to level a furnace & air conditioning coil for proper drainage.
- Proper leveling helps eliminate standing water, thus reducing bacteria
- Easily adjustable even after installation
- Legs can support up to 400 lbs.
- Adjustable from 2-3/4" to 4" height



MARS Economy Furnace Mounting Blocks

- Holds furnace 2" off the floor
- Absorbs vibration, reduces noise
- Composite construction
- Peel & stick installation



MARS NO.	DESCRIPTION	MARS PACK
79085	Economy Furnace Mounting Blocks	12

Restraining Kits

Older heating elements are no longer available, your only option is to repair them using a properly sized restraining kit. MARS Replacement coil kits for electric heat lets you repair strip heaters quickly and economically. MARS restraining kits can be used to repair burnt out heating elements in Electric Furnaces and Heat Pump Air Handler Heating Assemblies. Each kit contains one close wound, stretch to length, resistance coil with welded terminal bolts; two each male and female ceramic terminal insulators; two each .375 and .450 inch standard ceramic bushings; two each .375 and .450 inch extra long ceramic bushings; necessary nuts, washers, and installation instructions.

Features:

- Welded terminal bolts for low resistance and long life
- Close wound coil, stretch to fit many applications
- Complete with bushings, insulators and hardware



Replacement Coil Economy Kits

MARS No.	Description
34600	5000 Watt @ 240V; includes coil, insulators & hardware
34601	5000 Watt @ 240V; includes 300" fuse link, coil, insulators & hardware

MARS NO.	WATTAGE AT				STRETCHED LENGTH			
	240V	208V	480V	277V	INCHES		METERS	
					MIN	MAX	MIN	MAX
34602	5000	3750	—	—	44.62	127.48	1.13	3.24
34604	—	—	5000	—	61.78	176.53	1.57	4.48
34606	—	—	—	5000	59.44	169.82	1.51	4.31
34608	3500	2625	—	—	50.75	145.00	1.29	3.68
34610	—	—	3500	—	42.27	120.76	1.07	3.07
34614	2000	1500	—	—	25.90	74.01	0.66	1.88
34616	2500	1875	—	—	30.89	88.26	0.78	2.24
34620	—	—	—	2500	27.61	78.87	0.70	2.00
34622	1500	1125	—	—	17.04	48.69	0.43	1.24
34624	4500	3375	—	—	42.33	120.95	1.07	3.07
34626	—	—	4500	—	46.05	131.98	1.17	3.35
34630	—	—	2000	—	40.12	114.64	1.02	2.91
34652	6600	4950	—	—	70.56	201.59	1.79	5.12
34654	—	—	6600	—	65.39	186.71	1.66	4.74
34656	6000	4500	—	—	54.43	155.50	1.38	3.95
34658	—	—	6000	—	71.88	205.38	1.83	5.22
34660 ¹	5000	3756	—	—	25.00	70.00	—	—

(1) Larger diameter coil - 5/8"

Service & Installation

Thermostat Guards

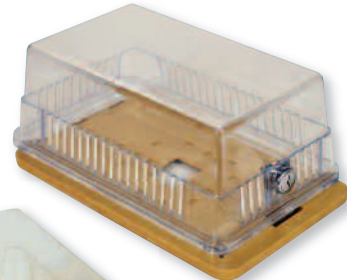
MARS offers a broad selection of thermostat guards. Popular models available include metal, clear plastic and opaque plastic designs. MARS thermostat guards are ideal for protecting thermostats in schools, industrial plants institutions, public facilities and other areas where unauthorized tampering could be a problem. These attractive units feature a rugged, light weight and compact design. All units supplied with key. Extra keys are available. Order part #70236 for the BTG thermostat guard key.

Thermostat Guards Cross Reference

MARS NO.	BEKO	D Teck	SUPCO
70201	BTG EK	585-TG5	BTG EK
70205	BTG K clear plst	585-TG2	BTG K
70210	BTG RK clear plastic	585-TG1	BTG-RK
70215	BTG 54VL metal	585-TG7	BTG-54 VL
70216	BTG 54VLW hinged metal	585-TG8	BTG-54VLW
70217	BTG DK clear plastic	585-TG6	BTG-DK
70220	BTG UK2 clear plastic	585-TG	BTG-UK2
70223	BTG UM metal	585-TG3	BTG-UM
70224	BTG UWM hinged metal	585-TG4	BTG-UWM
70236	F336 key		



70224



70220



70201



Plastic Thermostat Guards

MARS NO.	DESCRIPTION	BASE	MARS PACK	CASE QTY
70201	BTG-EK clear plastic cover	Solid	1	12
70205	BTG-K clear plastic cover	Dual	1	12
70210	BTG-RK clear plastic cover	Dual	1	12
70217	BTG-DK clear plastic	Dual	1	12
70220	BTG-UK2 clear plastic	Dual	1	12

Metal Thermostat Guards

MARS NO.	DESCRIPTION	BASE	MARS PACK	CASE QTY
70215	BTG-54VL metal hinged	Solid	1	12
70216	BTG-54VLW metal hinged	Ring	1	12
70223	BTG-UM metal	Solid	1	12
70224	BTG-UWM metal	Ring	1	12

Replacement Key

MARS NO.	DESCRIPTION	MARS PACK	CASE QTY
70236	F336, extra key for all BTG guards	1	1

MARS Keyless Thermostat Guard with Combination Lock

KEYLESS

Features:

- Combination lock with changeable code
- Control energy consumption and cost
- Prevent unauthorized access
- Hinged Design, ring back
- Easy Installation

Specifications:

Fits all thermostats up to:
7.25" W x 4.75" H x 2.25" D
Mounting screws and anchors included.



70249



MARS Flat Surface Igniters

Made 100% in the USA!



Glow with
USA

67900
Furnace Igniter Kit

- Includes 3 brackets, wire sleeving, mounting screw, 2 wire nuts, cross reference list, and instruction sheet
- 14" leads
- Replacement for flat and spiral igniters in over 50 furnace applications

67909

- 19" leads with sleeving and connector

REPLACES:
• Coleman 1474-051P, 052P

67914

- Gasket included
- 5.5" leads with connector

REPLACES:
• Amana 1004 1601, B1336102, D99182
• Trianco-Heatmaker 2600-359 • Uni-Line 41-401
• White Rodgers 767A-309, 767A-356

67915

- 19" leads with wire nuts

REPLACES:
• Armstrong 38322B001 • Clare C-238, C-242
• DMO 20834, 26789 • Dornback 271W
• Rheem 62-55774-01 • Trane 340039P01, IGN23
• Uni-Line 41-238, 41-242, 41-402
• White Rodgers 767A-371 • Williamson 09050

67916

- 5.5" leads with wire nuts

REPLACES:
• Raypak 600915 • Snyder General 1380654 • Trane B138196P01, IGN26, IGN30, Uni-Line 41-403
• Well McLain 511-330-193

67917

- 5.5" leads with wire nuts

REPLACES:
• Uni-Line 41-405 • White Rodgers 767A-361 • York 025-27766-000, 025-27774-000, 025-29043-000, 025-29050-000

67918

- 5.5" leads with connector

REPLACES:
• Trane B144676P02, IGN30 • Uni-Line 41-407

67919

- 5.5" leads with connector

REPLACES:
• Rheem 62-22868-92, 62-22868-93 • Trane B340039P01 • Uni-Line 41-408

67920

- 5.5" leads with connector

REPLACES:
• Carrier LH33ZS001, 002, 003, 004 • Ducane 20015201 • Snyder General 1380672, 1380680
• Trane IGN26 • Uni-Line 41-409
• Weil McLain 511-330-139

67921

- 36" leads with sleeving and connector

REPLACES:
• Lennox 33J37

67923

- 5.5" leads with connector

REPLACES:
• York 025-32625-000

67924

- 5.5" leads with connector
- Mounting bracket attached

REPLACES:
• Goodman B1401015, B1401018
• Modine 5H075032B

67925

- 11" leads with wire nuts
- Gasket included

REPLACES:
• Glowcore HSRK-7 • Lochinvar PLT2400
• Surfaceigniter FY009 • Uni-Line 41-406
• Weil-McLain 511-330-188 • White Rodgers 767A-374

68013

- 5.5" leads with connector
- Bracket included

REPLACES:
• Rheem 62-22868-82 • Uni-Line 41-411

68014

- 5.5" leads with connector
- Bracket included

REPLACES:
• Goodman B1401009 • Intercity 1009604
• Uni-Line 41-412

68015

- 8.5" leads with connector
- Mounting bracket and gasket included

68016

- 5.5" leads with connector

REPLACES:
• Trane B144676P02, IGN30 • Uni-Line 41-410

68017

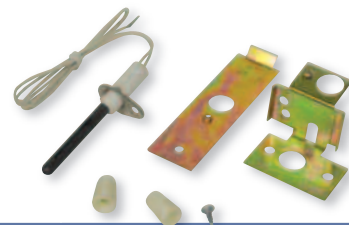
- 5.5" leads with connector

REPLACES:
• Uni-Line 41-404
• Weil McLain 511-330-190

Universal Round Silicon Nitride

Cross Reference

Round Silicon Nitride	Robertshaw	Supco	White-Rodgers
68040	41-801N	SSN2000	21D64-2

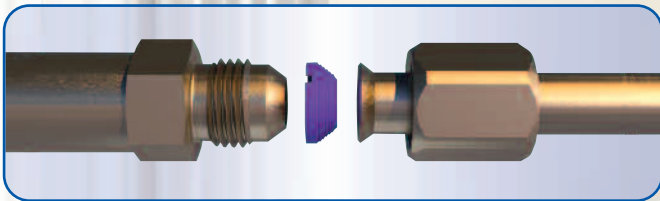


MARS Flared Line-Set Seal Kits

Flaretite seals are designed to eliminate refrigerant leaks when using flared refrigerant line-sets. The patented design utilizes concentric rings that form multiple seals down the face of the flare fitting. The entire seal is coated with a dry-to-the touch, baked-on Loctite sealant. Flaretite seals are the ultimate solution to eliminate refrigerant leaks.

Features

- Designed for Mini-Split Applications
- Kits include 4 seal rings
- Use on New and Existing Equipment
- Compatible with all Common Refrigerants
- Eliminate Call-Backs



1/4" Flare Seal



3/8" Flare Seal



1/2" Flare Seal



5/8" Flare Seal



MARS Kit No. 65467

- 2 ea. 1/4" Seals
- 2 ea. 3/8" Seals



MARS Kit No. 65468

- 2 ea. 1/4" Seals
- 2 ea. 1/2" Seals



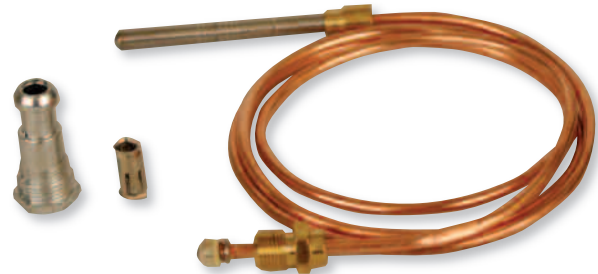
MARS Kit No. 65469

- 2 ea. 3/8" Seals
- 2 ea. 5/8" Seals

MARS Thermocouples

- High temperature stainless steel element for long life and dependable operation.
- Includes adapter fittings for replacing any thermocouple in the field.
- Individually display packaged.

MARS NO.	LENGTH
72218	18"
72224	24"
72230	30"
72236	36"
72248	48"

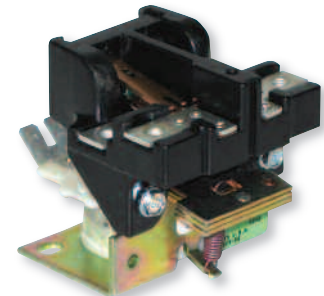


Magnetic Line Contactor

The MARS magnetic line contactor is designed primarily to replace contactors used in air conditioning and electric heating to control blower motors. In addition they are used to switch pumps and computer power supplies. Replace General Electric Contactors and other manufacturers including WR, Essex/RBM and Honeywell.

Cross Reference

GEMLINE	HONEYWELL NO.	MARS REPLACEMENT
MC11	R850B1146	18001



MARS NO.	DESCRIPTION	FULL LOAD AMPS	RESISTIVE AMPS	LOCKED ROTOR AMPS	COIL VOLTAGE	POLES	COIL VOLT	PICK-UP HOT	MAX COLD
18001	30 Amp 2 Pole Magnetic Line Contactor	30	30	120	24	2	24	20.5	19.2

Self Regulating Crankcase Heaters

MARS self-regulating crankcase heaters are designed for use with refrigeration compressors up to 5HP and 40 inches in circumference. These heating cables provide peak heat during cold periods and reduced heat when the air temperature rises and should not be used in non-hazardous areas.

- Cold length: 30"
- Heat cable length: 50"

MARS NO.	TYPE	WATTS	VOLTS
70970	Self Regulating	32W @ 50°F • 60W @ 0°F	120
70971	Self Regulating	32W @ 50°F • 60W @ 0°F	240



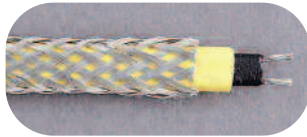
Heating Products



Freeze protection from EasyHeat!

Easy Heat and SR Trace are registered trademarks of Easy Heat Inc.

EasyHeat heating cable systems provide an economical and expedient solution to many cold weather and refrigeration related problems. These cables use relatively little power to help keep water supplies, refrigeration condensate lines and drain pans from freezing and backing up.



Residential Self Regulating Pipe Tracing Cable

- Cut to length (3 watts/ft @ 120VAC) up to 75 ft.
- Braided metal jacket for dry location application
- Connection kit provides end seal and plugs into standard 120 VAC outlet
- Automatically varies heat output with changes in surrounding temperature
- For use on plastic or metal pipes



MARS NO.	DESCRIPTION
70701	100' Reel
70704	Connection Kit
70705	Pre-set Thermostat (38 degrees)

Commercial Pipe Freeze Protection Cable

- No thermostat, no plug
- 2 foot orange 14/3 cold lead
- Jacketed for wet or dry applications
- 120 VAC unless noted
- For use on metal pipes only



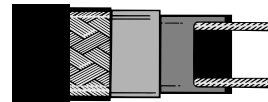
MARS NO.	DESCRIPTION
70720	3.28' length, 23 watts
70721	6.56' length, 46 watts
70722	6.56' length, 46 watts (240V)
70723	9.84' length, 69 watts
70724	13.12' length, 92 watts
70725	13.12' length, 92 watts (240V)
70726	16.41' length, 115 watts
70727	19.69' length, 138 watts
70728	19.69' length, 138 watts (240V)
70729	22.97' length, 161 watts
70730	26.25' length, 184 watts (240V)
70731	29.53' length, 207 watts
70732	32.81' length, 230 watts (240V)

Residential Pipe Freeze Protection Cable

- For use on plastic or metal pipes
- Jacketed for wet or dry applications
- Preassembled ready to install
- Plugs into standard 120 VAC outlet
- Built-In fixed thermostat



MARS NO.	DESCRIPTION
70710	3' length, 21 watts
70711	6' length, 42 watts
70712	9' length, 63 watts
70713	12' length, 84 watts
70714	15' length, 105 watts
70715	18' length, 126 watts
70716	24' length, 168 watts
70717	30' length, 210 watts
70718	40' length, 280 watts



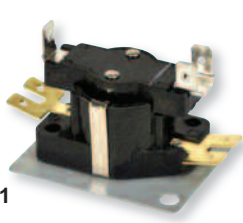
Commercial SR Trace® Self Regulating Pipe Tracing Cable

- Cut to length, up to 458' (120VAC)
- Wet (J jacket) or dry (copper braid) applications
- Automatically varies heat output with changes in surrounding temperature

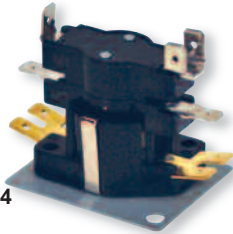


MARS NO.	DESCRIPTION
70742	250' reel, J jacket 5 watts/ft, (120V)
70744	Heat shrink end seal kit
70745	Heat shrink power/end connection kit
70746	Heat shrink splice and "T" connection kit

Electric Heat Sequencers & Time Delay Relays



33241



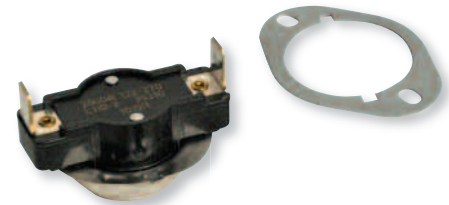
33244

MARS NO.	CONTROL SWITCH		TIMING SECONDS	
	VOLT	TYPE	ON	OFF
33241	24	SPST	1 - 24	45 - 75
33242	24	SPST	30 - 75	1 - 40
33243	24	SPST	1 - 60	1 - 45
33244	24	DPST	1 - 24	45 - 75
33245	24	DPST	30 - 75	1 - 40
33246	24	DPST	1 - 60	1 - 45
33247	24	SPDT	1 - 24	15 - 75
33256	120	DPST	20 - 70	20 - 80
33265	240	DPST	30 - 110	15 - 65
33266	240	DPST	20 - 70	20 - 80
33267	240	SPDT	20 - 70	20 - 80
33232	24	1-DPST	1 - 24	45 - 75
		1-SPST	30 - 70	1 - 40
33233	24	2-DPST	1 - 24	45 - 75
			30 - 70	1 - 40

High Limit Thermostats For Electric Heat

- Specifically designed for electric heat - individually bagged with accessories
- Open cup design for greater temperature sensitivity

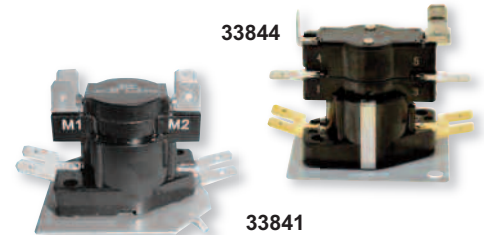
MARS NO.	TEMPERATURE °F	
	OPEN	CLOSE
39310	110	90
39312	120	100
39314	130	100
39316	140	100
39318	145	105
39320	150	110
39324	160	120
39326	170	130
39328	180	140
39330	190	150



MARS Electric Heat Sequencers

Features:

- Solid state dependability
- Replaces Honeywell, White Rodgers, and Klixon
- 12.5A to 25A contact ratings
- Quick connect terminals
- Various mounting positions
- Shock & vibration resistant
- Ambient rated from -50°F to 165°F
- Full-load rated auxiliary contacts



33844

33841

MARS NO.	TIMINGS	SWITCHES	TIMINGS-ON					TIMINGS-OFF				
			M1-M2	M3-M4	M5-M6	M7-M8	M9-M10	M1-M2	M3-M4	M5-M6	M7-M8	M9-M10
33841	1	1	1-20	-	-	-	-	40-110	-	-	-	-
33842	1	1	-	-	30 - 90	-	-	-	-	1-30	-	-
33844 ⁽¹⁾	1	2	1-20	■ 1-20	-	-	-	40-110	■ 40 - 110	-	-	-
33845	1	2	-	-	30 - 90	■ 30 - 90	-	-	-	1-30	■ 1-30	-
33832 ⁽¹⁾	2	3	1-110	■ 1-110	1-110	■ -	-	1-110	■ 1-110	1-110	■ -	-
33833 ⁽¹⁾	2	4	1-110	■ 1-110	1-110	■ 1-110	-	1-110	■ 1-110	1-110	■ 1-110	-
33848 ⁽¹⁾⁽²⁾	4	5	1-160	■ 1-160	1-160	■ 1-110	1-160	1-160	■ 1-160	1-160	■ 1-160	1-160

(1) M1-M2 and M3-M4 are always first switches to turn ON and to turn OFF. All other switches are random ON and random OFF

(2) #33848 - switch contacts designated F1-F2 instead of M1-M2

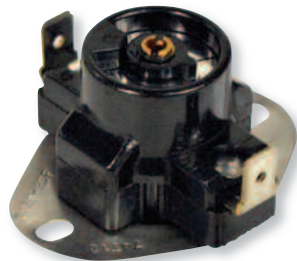
■ These contacts switch simultaneously

ON TIME – Elapsed time to make contacts after heater is energized (Min. to Max.) OFF TIME – Elapsed time to make contacts after heater is de-energized (Min. to Max.)

OFF Timings determined after PTC heater has been electrified for a total of 5 minutes.

Heating Products

Adjustable Fan & Limit Switches



- Easy dial adjustment, integral oval flange
- .25" Quick connect terminals

MARS NO.	TYPE	RANGE °F	DIFF. °F	SWITCHING ACTION
39205	Fan	90-130	20	close on rise
39210	Fan	140-18	20	close on rise
39220	Limit	135-175	40	open on rise
39225	Limit	175-215	40	open on rise
39230	Limit	210-250	40	open on rise
39235	Limit	250-290	40	open on rise

Fan & Limit Switches

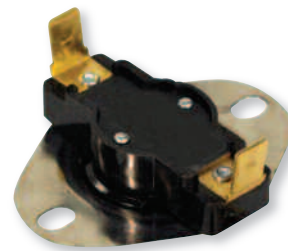
Manual Reset



- Thermostats - individually polybagged
- Open on temperature rise

MARS NO.	KLIXON TEMP. CODE	TEMPERATURE °F OPEN
39037	MR140	140
39038	MR150	150
39039	MR160	160
39095	MR170	170
39096	MR180	180
39097	MR190	190
39098	MR200	200
39040	MR210	210
39041	MR220	220
39042	MR240	240
39043	MR300	300

Fan & Limit Switches



Fan Switches

- Thermostats - individually polybagged
- Close on temperature rise

MARS NO.	KLIXON TEMP. CODE	TEMPERATURE °F OPEN	TEMPERATURE °F CLOSE
39006	F110-2	90	110
39007	F120-2	100	120
39008	F130-2	110	130
39009	F140-2	120	140
39010	F150-2	130	150
39011	F160-2	140	160

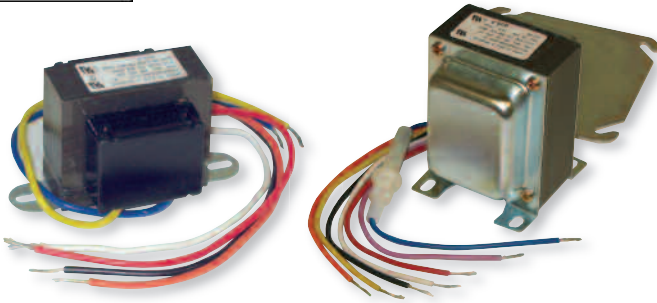
Limit Switches

- Thermostats - individually polybagged
- Open on temperature rise

MARS NO.	KLIXON TEMP. CODE	TEMPERATURE °F OPEN	TEMPERATURE °F CLOSE
39087	L130-4	130	90
39018	L140-4	140	100
39019	L150-4	150	110
39020	L160-4	160	120
39021	L170-4	170	130
39022	L180-4	180	140
39023	L190-4	190	150
39024	L200-4	200	160
39025	L210-4	210	170
39026	L220-4	220	180
39027	L230-4	230	190
39028	L240-4	240	200
39029	L250-4	250	210
39030	L270-4	270	230
39031	L300-4	300	260
39032	L325-4	325	285
39033	L350-4	350	310



Transformers



Closed Construction With Circuit Breaker

MARS NO.	JARD NO.	VA	PRIMARY VAC	SECONDARY VAC
44511	5041C	50	120/208/240/480	24
44512	6041C	60	120/208/240/480	24
44513	7541C	75	120/208/240/480	24
44514	7541STC	75	120/277/380/575	24

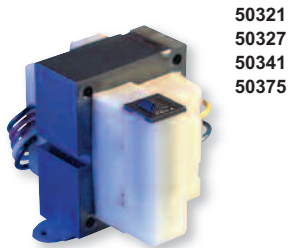
Open Construction, Wire Leads

MARS NO.	JARD NO.	VA	PRIMARY VAC	SECONDARY VAC
44501	2031F	20	120/208/240	24
44502	4011F	40	120	24
44503	4021F	40	208/240	24
44504	4031F	40	120/208/240	24
44505	4032F	40	120/208/240	2.5/12/24
44507	40271F	40	277	24

Multi-Mount Transformers Closed Construction, 4" x 4" Plate

MARS NO.	JARD NO.	VA	PRIMARY VAC	SECONDARY VAC
44522	4011M	40	120	24
44524	4031M	40	120/208/240	24
44525	5031M	50	120/208/240	24
44526	5032M	48	120/208/240	2.5/12/24
44527	7541M	75	120/208/240/480	24

MARS Transformers



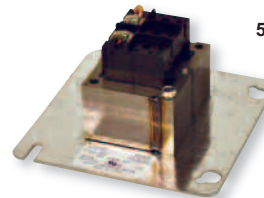
50321
50327
50341
50375



50302
50303
50304



50380



50305



Scan for more details.

Transformers - End Bell Type

MARS NO.	VOLTAGE PRIMARY	VOLTAGE SECONDARY	VA OUTPUT
50302	120	24	40
50303	208/240	24	40
50304	120/208/240	24	40
50333	120/208/240	24/12/12.5	48
50314	120/208/240	24	50

* Not UL listed (1) Color coded leads on secondary, (2) Screw terminals on secondary

Transformers With Manual Reset

MARS NO.	VOLTAGE PRIMARY	VOLTAGE SECONDARY	VA OUTPUT
50327	120/208/240/480	24	50
50321	120/208/240/480	24	75
50375	208/240/480/575	24	75
50341	120/208/240/480	24	100

Power Transformers

MARS NO.	VOLTAGE PRIMARY	VOLTAGE SECONDARY	VA OUTPUT
50380	208/240/480	120/24	50
50381	208/240/480	120/24	100

Economy Plate Mount Transformer

MARS NO.	VOLTAGE PRIMARY	VOLTAGE SECONDARY	VA OUTPUT
50305	120	24	40

Frame Mount

MARS NO.	CONNECTION	VOLTAGE PRIMARY	VOLTAGE SECONDARY	VA OUTPUT
50352	wire leads	120	24	40
50353	wire leads	240	24	40
50354	wire leads	120/208/240	24	40
50362	quick conn.	120	24	40
50363	quick conn.	240	24	40

Components

JARD General Purpose Switching Relays

SPST and SPDT fan relays are among the most popular relays used in air conditioning today.

JARD NO.	NORMALLY OPEN COIL VOLTAGE	CONTACT RATING 125/250 VAC		REPLACES ESSEX/RBM NO.
		INDUCTIVE	RESISTIVE	

SPST

92290	24	8 amps	16 amps	90-290, 90-290Q
92291	110-120	continuous	16 amps	90-291, 90-291Q
92292	208/240	25 amps inrush	16 amps	90-292, 90-292Q

SPDT

92293	24	8 amps	16 amps	90-293, 90-293Q
92294	110-120	continuous	16 amps	90-294, 90-294Q
92295	208/240	25 amps inrush	16 amps	90-295, 90-295Q



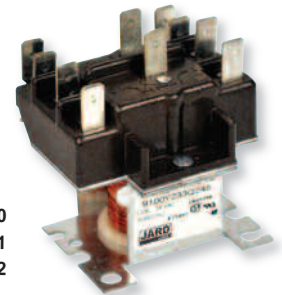
92290	92293	92360
92291	92294	92370
92292	92295	92380

25 Amp Switching Relays - 120V Contact Rating

JARD NO.	DESCRIPTION	COIL VOLTAGE	REPLACES
92360	SPST-NO	24	90360, 90360Q
92370	SPDT	24	90370, 90370Q
92380	SPNO-SPNC	24	90380, 90380Q

2PDT HVAC Relays

JARD NO.	COIL VOLTAGE	REPLACES
92340	24	90-340
92341	110/120	90-341
92342	208/240	90-342



92340
92341
92342

MARS Fan Control Centers

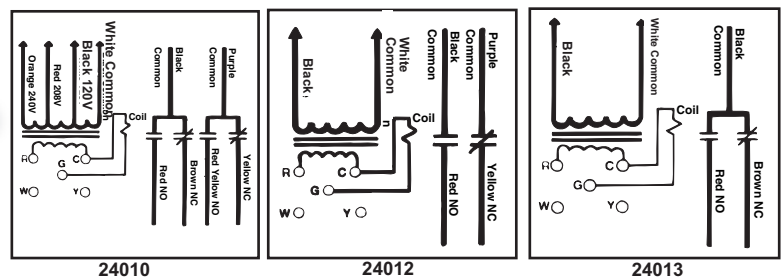
MARS series 240 fan centers provide convenient low voltage control of one and two speed fan motors and auxiliary circuits in heating, cooling, or heating/cooling applications. Each MARS fan center is a reliable, compact unit consisting of a 24 volt control transformer and a plug-in switching relay mounted on a 4" square electrical junction box cover. All line voltage connections are made inside the box with color coded pre-stripped leads. Low voltage connections are made at a convenient terminal board mounted to the transformer.

Features:

- Choice of SPST, SPDT, SPNO / SPNC or DPDT relay switching options
- UL 1585 40 VA transformer
- Color coded leads
- Low voltage terminal board
- Mounts directly to 4" electrical box • Made in USA



schematic:



40va 3/4 hp

MARS NO.	TRANSFORMER				RELAY	CONTACT RATINGS			
	PRIMARY		SECONDARY			120V AC (AMPS)		240V AC (AMPS)	
	VOLTAGE	CONNECTIONS	VOLTAGE	CONNECTIONS		FULL LOAD	LOCKED ROTOR	FULL LOAD	LOCKED ROTOR
24010	120/208/240	Color coded leads, pre-stripped	24V	Terminal board with 5 screw terminals	DPDT	13.8	82.8	6.9	41.4
24012	120	Color coded leads, pre-stripped	24V	Terminal board with 5 screw terminals	SPNO/SPNC	13.8	82.8	6.9	41.4
24013	120	Color coded leads, pre-stripped	24V	Terminal board with 5 screw terminals	SPDT	13.8	82.8	6.9	41.4

MARS Condensate Pumps

24' Lift Pump

MARS NO.	DESCRIPTION
21780	115 V, 60 Hz, 0.91 Amps, 71 Watts 6' Cord, 3/8" Check Valve, Safety Switch Medium Reservoir
21781	115 V, 60 Hz, 0.91 Amps, 71 Watts 6' Cord, 3/8" Check Valve, Safety Switch 20' Tubing, Medium Reservoir
21782	230 V, 60 Hz, 0.6 Amps, 75 Watts 6' Cord, 3/8" Check Valve, Safety Switch Medium Reservoir
21783	230 V, 60 Hz, 0.6 Amps, 75 Watts 6' Cord, 3/8" Check Valve, Safety Switch 20' Tubing, Medium Reservoir

Low Profile 22' Pump

MARS NO.	DESCRIPTION
21784	115 V, 60 Hz, 1.03 Amps, Low Profile, 22' Lift, 3/8 Check Valve, Safety Switch
21785	230 V, 60 Hz, 0.52 Amps, Low Profile, 22' Lift, 3/8 Check Valve, Safety Switch

16' Lift Pump

MARS NO.	DESCRIPTION
21786	115 V, 60 Hz, 0.75 Amps, 16' Lift, 3/8 Check Valve, Safety Switch, Medium Reservoir



21780-83



21784-85



21786

Check Valve Replacement

MARS NO.	DESCRIPTION
21787	Check Valve Replacement



MARS Corrugated Condensate Drain Line

MARS NO.	DESCRIPTION	MARS PACK
79127	5/8" Diameter x 20 ft long, Condensate Drain Line	1



See page 71 for complete selection and pricing of VINYL TUBING



CAPACITOR SUPERSTORE

Largest Selection Of Start & Run Capacitors In The HVAC/R Industry

Choose From Three Complete Lines Of North American
Manufactured, Time Proven, Brand Recognized Capacitors.

MARS Blue Box



MARS USA



JARD



Fixed Setting Pressure Controls

High Pressure Cut-Outs

JARD offers the most complete line of high pressure cut-outs available.

Features:

- Tamper proof construction
- Direct mounting on tubing



Specifications:

- Contacts rated at 6 amps, 24-240 volts
- 1/4" female flare S.A.E. mounting
- 18" leads
- UL & CSA recognized



High Pressure Cut-Outs, Open on Pressure Rise, Automatic Reset, Normally Closed

JARD NO.	DESCRIPTION	OPENING PRESSURE	RESET PRESSURE
43922	200/150 HP Open on rise	250	150
43924	275/195 HP Open on rise	275	195
43925	300/200 HP Open on rise	300	200
43926	325/225 HP Open on rise	325	225
43920	350/245 HP Open on rise	350	245
43927	350/250 HP Open on rise	350	250
43928	375/275 HP Open on rise	375	275
43929	400/200 HP Open on rise	400	200
43930	400/280 HP Open on rise	400	280
43931	400/300 HP Open on rise	400	300
43911	410/290 HP Open on rise	410	290
43932	425/300 HP Open on rise	425	300
43933	425/325 HP Open on rise	425	325
43934	450/250 HP Open on rise	450	250
43965	590/418 HP Open on rise	590	418
43935	600/475 HP Open on rise	600	475
43939	630/480 HP Open on rise	630	480

Low Pressure Controls

Features:

- Tamper proof construction
- Direct mounting on tubing



Specifications:

- Contacts rated at 6 amps, 24-240 volts
- 1/4" female flare S.A.E. mounting
- 18" leads
- UL & CSA recognized



Low Pressure Controls, Open on Pressure Fall, Automatic Reset, Normally Open

JARD NO.	DESCRIPTION	OPENING PRESSURE	RESET PRESSURE
43941	5/20 LP Open on fall	5	20
43942	5/30 LP Open on fall	5	30
43943	10/25 LP Open on fall	10	25
43944	15/35 LP Open on fall	15	35
43945	20/45 LP Open on fall	20	45
43946	25/50 LP Open on fall	25	50
43947	25/65 LP Open on fall	25	65
43948	25/80 LP Open on fall	25	80
43949	35/60 LP Open on fall	35	60
43950	40/80 LP Open on fall	40	80
43951	45/60 LP Open on fall	45	60
43952	50/90 LP Open on fall	50	90
43953	75/100 LP Open on fall	75	100
43975	90/120 LP Open on fall	90	120
43954	150/225 LP Open on fall	150	225
43955	170/225 LP Open on fall	170	225

Condenser Fan Cycling Switch

Manual Reset high pressure controls

Specifications:

- UL & CSA recognized
- 1/4" female flare S.A.E. mounting



JARD NO.	DESCRIPTION	OPENING PRESSURE	RESET PRESSURE	SWITCH ACTION (OPEN ON PRESSURE)
43901	75/100 FC Close on rise	75	100	Fall
43902	110/170 FC Close on rise	110	170	Fall
43903	125/265 FC Close on rise	125	265	Fall
43904	150/225 FC Close on rise	150	225	Fall
43970	180/240 FC Close on rise	180	240	Fall
43905	19/275 FC Close on rise	190	275	Fall
43906	210/275 FC Close on rise	210	275	Fall
43907	300/400 FC Close on rise	300	400	Fall
43912	375/Man. Open on rise	375	Manual	Rise
43913	410/Man. Open on rise	410	Manual	Rise
43916	475/Man. Open on rise	475	Manual	Rise

Components

MARS Complete Line of Pressure Switches Replacement for **Klixon** Pressure Switches

- Appropriate for a wide variety of HVAC/R, commercial, and industrial applications
- Models designed for use in R410A applications.



Low Pressure Cut-Out - Open On Pressure Drop

4 SERIES MARS NO.	CUT OUT	CUT IN	NOTES
43341	5	20	1/4" Female Flare S.A.E. Mounting
43342	5	30	1/4" Female Flare S.A.E. Mounting
43343	10	25	1/4" Female Flare S.A.E. Mounting
43344	15	35	1/4" Female Flare S.A.E. Mounting
43371	15	40	1/4" Copper Clad SS Tube, 90 degree elbow w/36" leads
43345	20	45	1/4" Female Flare S.A.E. Mounting
43372	22	50	1/4" Copper Clad SS Tube w/38" leads
43373	25	40	Gold Contacts 1/4" Female Flare w/36" leads
43346	25	50	1/4" Female Flare S.A.E. Mounting
43347	25	65	1/4" Female Flare S.A.E. Mounting
43348	25	80	1/4" Female Flare S.A.E. Mounting
43349	35	60	1/4" Female Flare S.A.E. Mounting
43350	40	80	1/4" Female Flare S.A.E. Mounting
43351	45	60	1/4" Female Flare S.A.E. Mounting
43352	50	90	1/4" Female Flare S.A.E. Mounting
43374	50	95	1/4" Copper Clad SS Tube w/36" leads
43353	75	100	1/4" Female Flare S.A.E. Mounting
43375	90	120	1/4" Female Flare, w/18" leads
43354	150	225	1/4" Female Flare S.A.E. Mounting
43355	170	250	1/4" Female Flare S.A.E. Mounting
43361	165	215	1/4" Female Flare S.A.E. Mounting w/Quick Connects
43362	200	240	1/4" Female Flare S.A.E. Mounting w/Quick Connects, SPDT



Fan Cycling - Close on Pressure Rise

4 SERIES MARS NO.	CUT OUT	CUT IN	NOTES
43301	75	120	1/4" Female Flare S.A.E. Mounting
43302	110	170	1/4" Female Flare S.A.E. Mounting
43303	125	265	1/4" Female Flare S.A.E. Mounting
43304	150	225	1/4" Female Flare S.A.E. Mounting
43305	190	275	1/4" Female Flare S.A.E. Mounting
43370	180	240	1/4" Female Flare S.A.E. Mounting
43306	210	275	1/4" Female Flare S.A.E. Mounting
43307	300	400	1/4" Female Flare S.A.E. Mounting

High Pressure Cut-Out - Open on Pressure Rise

4 SERIES MARS NO.	CUT OUT	CUT IN	NOTES
43337	200	150	1/4" Female Flare S.A.E. Mounting
43321	225	150	1/4" Female Flare S.A.E. Mounting
43322	250	150	1/4" Female Flare S.A.E. Mounting
43324	275	195	1/4" Female Flare S.A.E. Mounting
43325	300	200	1/4" Female Flare S.A.E. Mounting
43326	325	225	1/4" Female Flare S.A.E. Mounting
43320	350	230	1/4" Female Flare S.A.E. Mounting
43327	350	250	1/4" Female Flare S.A.E. Mounting
43328	375	275	1/4" Female Flare S.A.E. Mounting
43329	400	200	1/4" Female Flare S.A.E. Mounting
43330	400	280	1/4" Female Flare S.A.E. Mounting
43331	400	300	1/4" Female Flare S.A.E. Mounting
43311	410	290	1/4" Female Flare S.A.E. Mounting
43332	425	300	1/4" Female Flare S.A.E. Mounting
43333	425	325	1/4" Female Flare S.A.E. Mounting
43334	450	250	1/4" Female Flare S.A.E. Mounting
43365	590	418	1/4" Female Flare w/snubber
43335	600	475	1/4" Female Flare S.A.E. Mounting
43366	610	420	1/4" Copper Clad SS Tube, 90 degree elbow w/snubber
43376	610	420	1/4" Copper Clad SS Tube w/snubber
43339	630	480	1/4" Female Flare S.A.E. Mounting
43367	650	450	1/4" Copper Clad SS Tube w/snubber



High Pressure - Manual Reset - Open on Pressure Rise

4 SERIES MARS NO.	CUT OUT	CUT IN	NOTES
43312	375	Manual	1/4" Female Flare S.A.E. Mounting
43313	410	Manual	1/4" Female Flare S.A.E. Mounting
43314	415	Manual	Capillary Tube
43315	440	Manual	Capillary Tube
43316	475	Manual	1/4" Female Flare S.A.E. Mounting
43368	590	Manual	1/4" Female Flare w/snubber
43369	610	Manual	1/4" Female Flare w/snubber

The Turbo® 200 Family of Products

Have The Right Capacitor and Hardstart For The Job... Every Time.
Perfect Solution For Off Hour Emergency Service Calls.



Scan for video.



TURBO® 200

Universal Run & Start Capacitor Replacement

One model covers a range of single and dual mfd ratings.

Universal HardStart Replacement

One Turbo® Easy-Start™ Hardstart can replace any one of four compressor hardstart kits on the market.

MARS NO.	DESCRIPTION	MICROFARAD
12100	Turbo® 200 Mini	2.5 mfd - 12.5 mfd, 370V or 440V
12500	Turbo® 200 Mini - Oval	2.5 mfd - 12.5 mfd, 370V or 440V
12200	Turbo® 200	2.5 mfd - 67.5 mfd, 370V or 440V
12300	Turbo® 200 X	5.0 mfd - 97.5 mfd, 370V or 440V
11200	Turbolytic™ 50 Universal Motor Start Capacitor	23 mfd - 302 mfd, 125V to 330V
11100	Turbolytic™ JR	23 mfd - 208 mfd, 125V to 330V
12600	Turbo® Easy-Start Hardstart	Up to 1 ton 108-130 mfd 1 to 2 tons 189-227 mfd 2.5 to 3 tons 233-280 mfd 3.5 to 5 tons 270 to 324 mfd
86150	TurboMeter™ See the dual values develop simultaneously on the screen as you create the ratings needed.	

MARS Motor Torque Multiplier

Features:

- Totally solid state integrated design
- Fast, easy two wire installation
- Three mounting options; clip, screw, or capacitor bracket
- Individually packaged



MARS NO.	MODEL NO.	H.P.	VOLT MAX.
32701	100	1/2 to 5	277V
32702	200	1/2 to 10	277V

MARS AllStart™ Hard Start Device

Features:

- Maximum Starting Torque!
- More Than 20% Faster Starts!
- Easy Two Wire Installation
- Recycles Instantly
- Individually packaged with wiring instructions



MARS NO.	MODEL NO.	H.P.	VOLT MAX.
32708	AllStart	1/2 to 10	115-277V

MARS Combination Starters

Features:

- Factory wired
- Wiring diagram on the product label
- Compressor leads have push-on terminals for easy installation
- Compact design
- Universal application reduces inventory



MARS NO.	MODEL NO.	H.P.	VOLT MAX.
32741	MCS 41	1/4 to 1/3	115V
32781	MCS 81	1/12 to 1/5	115V

Components

Contactor Comparison JARD – MARS 910 – MARS 780

MARS Contactor Comparison

FEATURE	JARD	MARS 910	MARS 780
Aux Switches Available	Yes	Yes	Yes
Arch Window Lugs	Yes	Yes	Yes
Enclosed Body	No	Yes	Yes
Copper & Brass Terminals	No	Yes	Yes
Heavy Duty Silver Cadmium Contacts	No	Yes	Yes
ARI 780/790	No	Yes	Yes
Removable Cover	Yes	No	Yes
Removable Base	Yes	No	Yes
Accepts Furnas Aux Switch	No	No	Yes
Replacement Coils	No	No	Yes

The **MARS** 780 Series



61720



61430



61445

MODEL NO.	POLES	FULL LOAD AMPS	COIL VOLTAGE	WIRE TERMINATION
61320	1.5	30	24	Quick Connect & Screw Terminals
61321	1.5	30	120	Quick Connect & Screw Terminals
61322	1.5	30	208-240	Quick Connect & Screw Terminals
61720	1.5	30	24	Quick Connect & Box Lugs
61721	1.5	30	120	Quick Connect & Box Lugs
61722	1.5	30	208-240	Quick Connect & Box Lugs
61730	1.5	40	24	Quick Connect & Box Lugs
61731	1.5	40	120	Quick Connect & Box Lugs
61732	1.5	40	208-240	Quick Connect & Box Lugs
61345	2	30	24	Quick Connect & Screw Terminals
61346	2	30	120	Quick Connect & Screw Terminals
61347	2	30	208-240	Quick Connect & Screw Terminals
61745	2	30	24	Quick Connect & Box Lugs
61746	2	30	120	Quick Connect & Box Lugs
61747	2	30	208-240	Quick Connect & Box Lugs
61755	2	40	24	Quick Connect & Box Lugs
61756	2	40	120	Quick Connect & Box Lugs
61757	2	40	208-240	Quick Connect & Box Lugs
61430	3	30	24	Screw Terminals
61431	3	30	120	Screw Terminals
61432	3	30	208-240	Screw Terminals
61750	3	30	24	Box Lugs
61751	3	30	120	Box Lugs
61752	3	30	208-240	Box Lugs
61445	3	40	24	Box Lugs
61446	3	40	120	Box Lugs
61447	3	40	208-240	Box Lugs
61460	3	50	24	Box Lugs
61461	3	50	120	Box Lugs
61462	3	50	208-240	Box Lugs
61470	3	60	24	Box Lugs
61471	3	60	120	Box Lugs
61472	3	60	208-240	Box Lugs
61480	3	75	24	Box Lugs
61481	3	75	120	Box Lugs
61482	3	75	208-240	Box Lugs
61490	3	90	24	Box Lugs
61491	3	90	120	Box Lugs
61492	3	90	208-240	Box Lugs

Components

MARS 910 Definite Purpose Contactors

MARS definite purpose contactors are designed for use on refrigeration, air conditioning, and electric heating systems. They are available in one pole with shunt (one and one half pole) configurations, from 30 thru 40 amps. MARS brand definite purpose contactors are also available in 2 pole models (30 and 40 amp) and 3 pole models (30 through 75 amp). The universal mounting base allows replacement of most contactor brands. Straight-thru wiring and small size speeds installation.

Features:

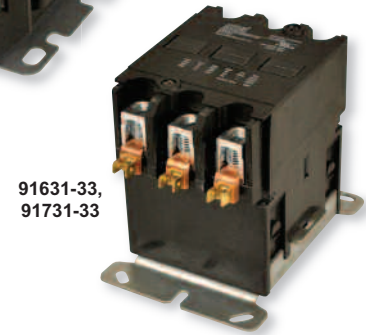
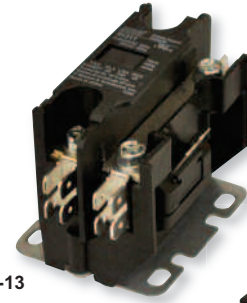
- Used in air conditioning, heating and refrigeration
- Box lug terminations speed installation
- Universal mounting base
- Contact cover and enclosed coils reduce dirt and insect intrusion
- Compact design
- Silver-Cadmium contacts

Specifications:

- Meets ARI 780/790 requirements
- cULus Approval
- 1,000,000 Cycle mechanical life

Auxiliary Switches

MARS NO.	DESCRIPTION	USED ON
61623	SPDT	All 3 Pole 910
61624	1 NO	
61625	1 NC	



MARS NO.	FLA	POLES	LOCKED ROTOR AMPS				RES. AMPS	COIL VOLTS	TERMINATION	HORSEPOWER			
			240	277	480	600				1 PH 240	240	3 PH 480	600
91311							24						
91312	30	1 Pole w/Shunt	180	180			40	120	Screw Type	-	-	-	-
91313								208/230					
91315								24					
91316	30	1 Pole w/Shunt	180	180			40	120	Box Lug	-	-	-	-
91317								208/230					
91321								24					
91322	30	2	180	-	150	120	40	120	Screw Type	-	-	-	-
91323								208/230					
91325								24					
91326	30	2	180	-	150	120	40	120	Box Lug	-	-	-	-
91327								208/230					
91331								24					
91332	30	3	180	-	150	120	40	120	Screw Type	3 HP	7.5 HP	10 HP	15 HP
91333								208/230					
91335								24					
91336	30	3	180	-	150	120	40	120	Box Lug	3 HP	7.5 HP	10 HP	15 HP
91337								208/230					
91411	40	1 Pole w/Shunt	240	240	-	-	50	24	Box Lug	-	-	-	-
91421								24					
91422	40	2	240	-	200	160	50	120	Box Lug	-	-	-	-
91423								208/230					
91431								24					
91432	40	3	240	-	200	160	50	120	Box Lug	5 HP	10HP	15 HP	20 HP
91433								208/230					
91531								24					
91532	50	3	300	-	250	200	63	120	Box Lug	5 HP	15 HP	20 HP	25 HP
91533								208/230					
91631								24					
91632	60	3	360	-	300	240	75	120	Box Lug	7.5 HP	20 HP	25 HP	30 HP
91633								208/230					
91731								24					
91732	75	3	450	-	375	300	94	120	Box Lug	15 HP	25 HP	40 HP	40 HP
91733								208/230					

JARD[®] Definite Purpose Contactors

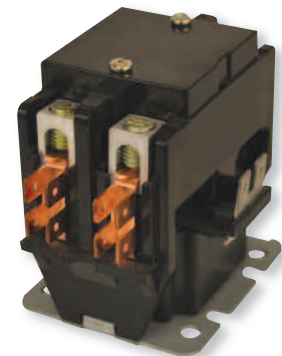
JARD Definite Purpose Contactors are designed for use on refrigeration, air conditioning, and electric heating systems. The universal mounting base allows replacement of most contactor brands. Power connections can be made with lugs & quick connects.

- Lug terminals with quick connects
- UL
- CUL

JARD W/LUGS	POLES	FULL LOAD AMPS	FULL RESISTIVE AMPS	COIL VOLTAGE
17215	1-1/2	25	40	24
17216	1-1/2	25	40	120
17217	1-1/2	25	40	240
17225	2	25	40	24
17226	2	25	40	120
17227	2	25	40	240
17315	1-1/2	30	40	24
17316	1-1/2	30	40	120
17317	1-1/2	30	40	240
17325	2	30	40	24
17326	2	30	40	120
17327	2	30	40	240
17335	3	30	40	24
17336	3	30	40	120
17337	3	30	40	240
17415	1-1/2	40	50	24
17416	1-1/2	40	50	120
17417	1-1/2	40	50	240
17425	2	40	50	24
17426	2	40	50	120
17427	2	40	50	240
17435	3	40	50	24
17436	3	40	50	120
17437	3	40	50	240
17535	3	50	65	24
17536	3	50	65	120
17537	3	50	65	240
17635	3	60	75	24
17636	3	60	75	120
17637	3	60	75	240
17735	3	75	90	24
17736	3	75	90	120
17737	3	75	90	240
17935	3	90	120	24
17936	3	90	120	120
17937	3	90	120	240
17999	Auxillary Contact - Fits 40A 3P Models			
17998	Auxillary Contact - Fits 50A & 60A 3P Models			
17997	Auxillary Contact - Fits 75A & 90A 3P Models			



17425



17425



MARS Line Set Covers by Cover Guard

The Cover Guard refrigerant line set cover system is the only system available you can adjust to fit your installation. Cover system adjusts to accommodate a single line set or a multi-head ductless installation. Line sets, drain lines and control cables can all be hidden for a clean looking installation. Stock one system that is adjustable on the jobsite and eliminate the need to stock standard and large cover sizes.

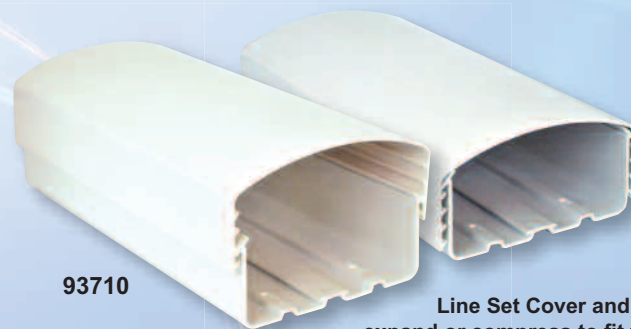
Features:

- The only size adjustable line set cover system - One size for every job
- Accommodates new thicker line set insulation sizes
- Perfect for Residential, Ductless multi-head systems and Commercial
- Accepts multiple sets of refrigerant lines, cable and drain lines
- Covers interlock for a secure and strong installation
- Protective "peel off film" protects cover from dirt and scratches
- UV Resistant plastic – will not chalk or fade
- Paintable



93724 Wall Duct Installation Kit includes:

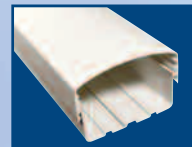
- 3 ea. 93710 4 ft Line Duct Channel
- 2 ea. 93713 Couplers
- 1 ea. 93716 90° Elbow
- 1 ea. 93718 Wall Inlet
- 1 ea. 93714 End Cap
- Cam Screws & Clips



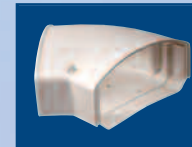
93710

Line Set Cover and fittings expand or compress to fit the job!

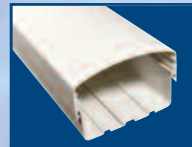
Products & Accessories



93710
4' Line Duct
(12/Case)



93715
45° Elbow
(6/Case)



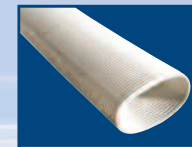
93727
78" Line Duct
(6/Case)



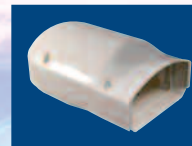
93720
90° Sweep
(6/Case)



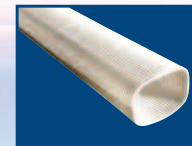
93713
Coupler
(6/Case)



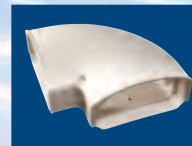
93712
Flex Elbow Small
(6/Case)



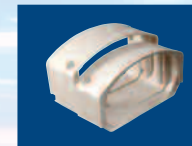
93718
Wall Inlet
(6/Case)



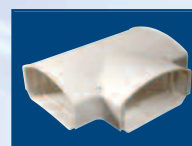
93711
Flex Elbow Large
(6/Case)



93716
90° Elbow
(6/Case)



93721
Flex Adaptor
(6/Case)



93717
Tee Elbow
(6/Case)



93725
Inside 90° Elbow
(6/Case)



93714
End Cap
(6/Case)



93726
Outside 90° Elbow
(6/Case)



93719
Wall Flange
(6/Case)



93722
Cam Screw (50/bag)



93723
Duct Clips (25/bag)

Help The Homeowner Protect Their Home

MARS Side Open Disconnect Boxes with Internal Surge

MARS Disconnect with integrated surge protector provides a unitized design for quick and clean installation. The metal weather-resistant enclosure provides additional robustness and security. MARS Surge Protectors provide the performance necessary to protect critical components in high efficiency mini-split and unitary HVAC equipment.

Features:

- Integrated internal surge protector
- Metal-weather resistant enclosure
- External LED status indicator
- cULus rating
- 3 Year warranty
- \$7500 Connected equipment warranty

Surge Protector Ratings:

- Type 1 or 2 SPD
- UL 1449 4th Edition
- 120/240 Split phase 50/60Hz
- Nominal discharge (In): 10kA
- SCCR 22kA
- Max continuous overvoltage: (MCOV) L-N 150V / L-L 300V
- Voltage protection rating: (VPR) L-N 700V / L-L 1200V

Protects:

- Motors
- Compressors
- Control Boards
- Sensors
- Reversing valves



MARS NO.	DESCRIPTION	WIRE CONFIGURATION	ENCLOSURE	UL 1449 4TH ED
83915	60 Amp Non-Fused	L1,L2,L/N-G	NEMA 3R, Rainproof	cULus
83916	30 Amp Fused	L1,L2,L/N-G	NEMA 3R, Rainproof	cULus
83917	60 Amp Fused	L1,L2,L/N-G	NEMA 3R, Rainproof	cULus

MARS NO.	DESCRIPTION
83914	Replacement Surge Module



MARS Surge Protective devices utilize Thermally Protective MOV surge technology

Components

MARS HVAC Surge Protective Device

Reduce The Risk & Liability of Electrical Maintenance & Repair Costs

The MARS SPD is designed to protect your HVAC equipment from power spikes, surges and transients. Power spikes and surges can damage compressors, control boards, sensors and ECM motors resulting in costly repairs and down time. The MARS SPD utilizes Thermally Protected MOV technology to provide safe and reliable surge protection.

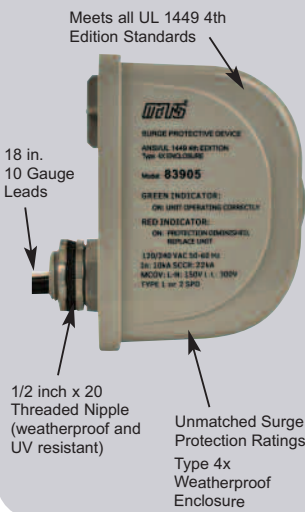
Protects:

- Compressors
- Heat Pumps
- Ideal for Ductless Systems
- Inverter Boards
- ECM Motors
- Control Boards
- Transformers
- Relays
- Sensors

Features:

- Easy Installation to Disconnect
- Weatherproof 4X Enclosure
- 18" Pre-stripped Leads
- Green & Red LED Status Indicators
- Thermally Protected MOVs
- 120/240V Single (Split) Phase 50/60Hz
- Short Circuit Current Rating
 - 22,000 Amps
- MCOV L-N 150V / L-L 330V
- Voltage Protection Rating
 - L-N 800V / L-L 1200V
- UL 1449 4th Edition
- Type 1 or 2 Surge Protection Rating
- 3 Year Warranty
- \$7,500 Connected Equipment Warranty

120/240 VAC Single Split Phase SPD for use on a variety of HVAC Equipment



MARS Surge Protective devices utilize Thermally Protective MOV surge technology

Specifications

MARS NO.	VOLTAGE	WIRE CONFIGURATION	SPD TYPE	MCOV	ENCL	UL 1449 4TH EDITION
83905	120/240	L1,L2,L/N-G	1 or 2	150/300	Type 4X	cULus

MARS HVAC Surge Protective Device

• Low Voltage • Coil Freeze-up Protection

The iSP (*i*ntelligent Surge Protection) offers comprehensive protection for your HVAC equipment.

Protects the following Equipment and Components:

- Compressors
- Heat Pumps
- Control & Defrost Boards
- Reversing Valves
- Sensors & Relays
- ECM Motors
- Transformers

Plus:

- Short Cycle Guard
- Low Refrigerant Detection

Features:

- Easy installation to disconnect box
- Green & Red LED status indicators.
- Voltage protection rating L-N 700V / L-L 1000V
- Fits 1/2" knockouts
- Max surge current 10,000 A
- 3 Year warranty
- \$7,500 Connected equipment warranty

MARS HVAC Surge Protective Device

The MARS 83904 SPD is designed specifically for 120V furnace and air handler applications. The furnace and air handler contain components that must be protected from surges such as, ECM motors, Control Boards, Transformers. The MARS Surge utilizes thermally protected MOV technology for safe and reliable protection of equipment. The 120V Surge Device is easy to install with only 2 wires to connect.

Protects:

- Ideal for 120V Ductless Systems
- Furnace & Air Handlers
- Inverter Boards
- ECM Motors
- Control Boards
- Transformers
- Relays
- Sensors

Features:

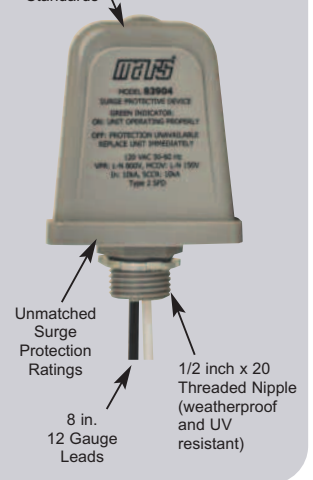
- Easy 2 Wire Installation
- 10" Pre-stripped Leads
- Green LED Status Indicator
- Thermally Protected MOVs
- 120V Single Phase 50/60Hz
- Short Circuit Current Rating
 - 10,000 Amps
- MCOV L-N 150V
- Voltage Protection Rating
 - L-N 700V
- UL 1449 4th Edition
- Type 1 or 2 Surge Protection Rating
- 3 Year Warranty
- \$7,500 Connected Equipment Warranty

120 VAC Single Split Phase SPD



LED Protection Status Indicator

Meets all UL 1449 4th Edition Standards



MARS Surge Protective devices utilize Thermally Protective MOV surge technology

Specifications

MARS NO.	VOLTAGE	WIRE CONFIGURATION	SPD TYPE	MCOV	ENCL	UL 1449 4TH EDITION
83904	120	L1,L2,L/N-G	1 or 2	150	Type 2	cULus

MARS Surge Protective devices utilize Thermally Protective MOV surge technology



Specifications

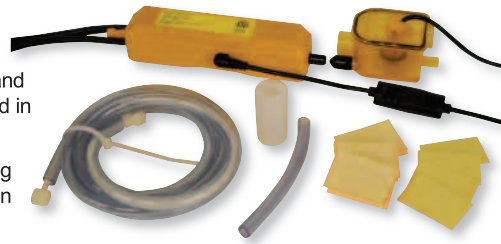
MARS NO.	VOLTAGE	WIRE CONFIGURATION	SPD TYPE	MCOV	ENCL	UL 1449 4TH EDITION
83907	240	L1,L2,L/N-G	1 or 2	150/300	Type 4X	cULus

MERCURY Mini-Split Pump Kit

Mercury pumps are designed for wall mount ductless mini-split AC units and evaporator coil applications. Pump mounting is flexible and can be installed in the evaporator unit, duct channel or above the unit in the ceiling.

Kit Includes – Pump, reservoir with safety switch, adapter, cable ties, tubing to connect pump and reservoir, velcro mounting tape for ease of installation and service.

- Self priming, fully potted pump
- Silent operation
- 26 Ft lift
- 2.6 Gallon per hour condensate capacity
- Standard safety switch provides connections for unit shut down and alarm.
- For use with equipment up to 25,000 BTU's



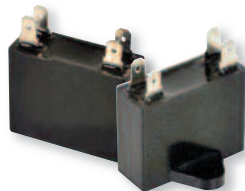
MARS NO.	VOLTAGE	HEAD	0 FT.	13 FT.	20 FT.	26 FT.
21790	115V 60Hz	GPH	2.64	2.38	1.59	0.92
21791	115/220V 60Hz	GPH	2.64	2.38	1.59	0.92

MARS Mini-Split Run Capacitors

MARS mini-split motor run capacitors are epoxy/resin sealed and widely used as the start-up and/or run capacitor for your motor. They feature very small dissipation factor and inherent temperature rise, high insulation resistance, and stable capacitance.

Technical Specification:

- Ambient temperature: 70° C
- Rated voltage: 450 VAC
- Capacitance tolerance: ±5
- 50/60 Hz
- Standard: IEC252-2001



MARS NO.	DESCRIPTION	DIMENSIONS		
		H	D	W
12380	1 MFD X 450V	1-1/2	X 1/2	X 1
12381	1.5 MFD X 450V	1-1/2	X 1/2	X 1
12382	2 MFD X 450V	1-1/2	X 1/2	X 1
12383	2.5 MFD X 450V	1-1/2	X 3/4	X 1-1/4
12384	3 MFD X 450V	1-1/2	X 3/4	X 1-1/4
12385	3.5 MFD X 450V	1-7/8	X 3/4	X 1-3/8
12386	4 MFD X 450V	1-7/8	X 3/4	X 1-3/8
12388	5 MFD X 450V	1-7/8	X 7/8	X 1-3/8
12390	6 MFD X 450V	1-7/8	X 1	X 1-1/2

MARS Universal Remote Control for Mini-Split Units

MARS Universal Remote will operate with virtually any mini-split produced in any region of the world. Programming is accomplished by inputting your mini-split brand code or use the easy and intuitive self learn mode to set-up the remote to operate your mini-split. Operates with 2 AAA batteries.

- One touch function with LCD display
- Braille enabled
- Celsius or fahrenheit display
- Clock display
- 24 Hr. on/off timer for energy savings
- Displays room temperature
- Energy saver feature
- Automatically determines heat or cool mode

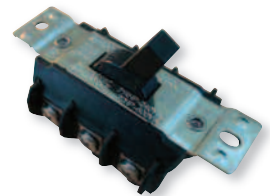


MARS NO.	DESCRIPTION	MARS PACK
65775	Mini-Split Universal Remote	1

3 Pole Mini-Split Disconnect Switch

Local codes require a disconnect switch to safely shut off power for indoor mini-split AC and Heat Pumps. The disconnect switch will break both power lines L1 and L2 along with the high voltage communicating line to meet local code requirements.

- UL 30 amp rated motor disconnect
- 3 pole
- 600V max



MARS NO.	DESCRIPTION	MARS PACK	CASE QTY
84711	30A-600V 3 Pole 3Ph AC Motor Switch(Bulk)	1	100

MARS Flexible Mini-Split Line Set Connectors

MARS flexible line set connectors provide ease of installation for mini-split indoor evaporator units. Flexible line sets allow for line set connection prior to mounting the unit on the wall. Flexible line sets eliminate copper line kinking during the installation process and provide for future ease of service of the AC unit. All flex line sets are 36in. in length to facilitate installation of wall mount evaporators.

Features:

- High pressure stainless steel braided line rated to 800 psi
- R410a compatible
- 3 inch copper stubs
- 36 inch overall length



MARS NO.	DESCRIPTION	CASE QTY
52345	1/4" X 36" Mini Split Flex Line Set	1
52346	3/8" X 36" Mini Split Flex Line Set	1
52347	1/2" X 36" Mini Split Flex Line Set	1
52348	5/8" X 36" Mini Split Flex Line Set	1

Service & Installation



For the largest selection of fuses you can always find a wide variety of fuses in stock and ready to ship ...

For additional fuses see MARS Component, Service & Installation catalog

RK5 Time Delay Fuse 250V

Replaces: TR, ECNR, FRNR, FLNR

MARS NO.	DESCRIPTION	MARS PACK
81006	.5A - 250V	10
81009	1A - 250V	10
81016	2A - 250V	10
81017	2.5A - 250V	10
81019	3A - 250V	10
81020	3.2A - 250V	10
81021	4A - 250V	10
81024	5A - 250V	10
81025	5.6A - 250V	10
81026	6A - 250V	10
81027	6.25A - 250V	10
81029	7A - 250V	10
81030	8A - 250V	10
81032	10A - 250V	10
81033	12A - 250V	10
81034	15A - 250V	10
81035	17.5A - 250V	10
81036	20A - 250V	10
81037	25A - 250V	10
81038	30A - 250V	10
81039	35A - 250V	10
81040	40A - 250V	10
81041	45A - 250V	10
81042	50A - 250V	10
81043	60A - 250V	10
81044	70A - 250V	5
81045	80A - 250V	5
81046	90A - 250V	5
81047	100A - 250V	5
81048	110A - 250V	1
81049	125A - 250V	1
81050	150A - 250V	1
81051	175A - 250V	1
81052	200A - 250V	1
81053	225A - 250V	1
81054	350A - 250V	1
81056	400A - 250V	1
81055	600A - 250V	1

RK5 Time Delay Fuse 600V

Replaces: TRS, ECSR, FRSR, FLSR

MARS NO.	DESCRIPTION	MARS PACK
81103	.2A - 600V	10
81106	.5A - 600V	10
81109	1A - 600V	10
81110	1.6A - 600V	10
81111	2A - 600V	10
81112	2.25A - 600V	10
81124	5A - 600V	10
81125	6A - 600V	10
81132	10A - 600V	10
81133	12A - 600V	10
81134	15A - 600V	10
81136	20A - 600V	10
81137	25A - 600V	10
81138	30A - 600V	10
81139	35A - 600V	10
81140	40A - 600V	10
81147	45A - 600V	10
81141	50A - 600V	10
81142	60A - 600V	10
81143	70A - 600V	5
81144	80A - 600V	5
81145	90A - 600V	5
81146	100A - 600V	5
81154	110A - 600V	1
81148	125A - 600V	1
81149	150A - 600V	1
81150	175A - 600V	1
81151	200A - 600V	1
81152	250A - 600V	1
81153	300A - 600V	1



ATC Automotive Blade Type Fuse - Fast Acting UL Fuses

General Purpose Plastic Housing with Zinc Fuse Element

MARS NO.	DESCRIPTION	MARS PACK
82230	3A ATC Auto Blade-Type, Violet 32V DC	5
82231	5A ATC Auto Blade-Type, Tan 32V DC	5



GATES V-Belt Product Offering

Hi-Power® II Belts

Gates Hi-Power II belts are engineered for classical applications. They have concave sidewalls to distribute wear evenly while providing proper belt support for improved service life. Flex-bonded cords and flex-weave covers make them the No. 1 choice for heavy-duty conventional V-belt drives. Hi-Power II belts also resist the effects of oil, heat, ozone, weather and aging while meeting RMA standards for static conductivity.

Truflex® V-Belts

Gates Truflex® belts offer improved performance on light duty, fractional horsepower (FHP) V-belt drives. Their unique construction provides smooth, quiet operation with less vibration.

Features & Benefits of Hi-Power® II Belts & Truflex® V-Belts

- Gates Curves provide proper cord support and full contact with the sheave-groove for uniform loading, uniform wear, and increased belt life.
- Flex-Bonded Cords are strongly bonded to the body of the belt resulting in equal load distribution and the absorption of bending stress without cord reduction.
- Flex-Weave® Cover is a patented fabric construction for longer cover life, providing extended protection to the belt core from oil, dirt and heat.
- Meets RMA static conductivity requirements.
- Meets RMA oil and heat resistant standards.

Tri-Power® Belts

Constructed with Gates proprietary construction, this belt has a superior combination of flex and load carrying capacity, as well as less stretch resulting in less maintenance.

Applications: Suitable for all industrial applications, particularly where small or sub-minimal sheave diameters are required.

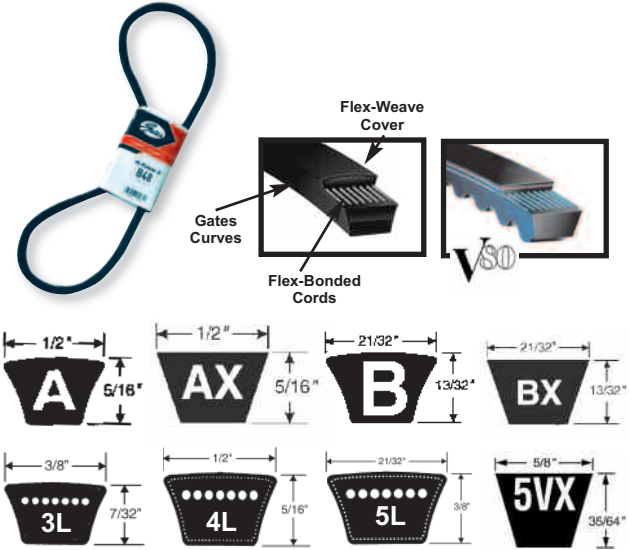
Gates Super HC® Molded Belts

Constructed with Gates proprietary construction, this belt has a superior combination of flex and load carrying capacity, as well as transmitting more horsepower than the classical cross sections in the same amount of drive space.

Applications: Suitable for all industrial applications, particularly where space, weight and horsepower capacity are critical.

Features & Benefits of Tri-Power Belts & Gates Super HC® Molded Belts

- Flex-Bonded Cords are strongly bonded to the body of the belt resulting in equal load distribution and the absorption of bending stress without cord deterioration.
- Meets RMA oil and heat resistant standards.
- Meets RMA static conductivity requirements.
- Notches molded into the belt during manufacturing make this belt well suited for drives with smaller diameter sheaves.
- Belt Edge is machined for even sheave groove contact resulting in less slip and wear



MARS#	Desc.
3L Belts	
74103	3L170
74104	3L180
74105	3L190
74106	3L200
74107	3L210
74108	3L220
74109	3L230
74110	3L240
74111	3L250
74112	3L260

MARS#	Desc.
A Belts	
74339	A35
74340	A36
74342	A38
74343	A39
74344	A40
74348	A44
74350	A46
74352	A48
74353	A49
74355	A51

MARS#	Desc.
4L Belts	
74157	4L190
74158	4L200
74159	4L210
74160	4L220
74162	4L230
74163	4L240
74164	4L250
74165	4L260
74166	4L270
74167	4L280

MARS#	Desc.
AX Belts	
74566	AX26
74554	AX32
74569	AX35
74570	AX36
74572	AX38
74573	AX40
74604	AX44
74577	AX46
74578	AX48

MARS#	Desc.
5L Belts	
74265	5L430
74267	5L450
74270	5L480
74275	5L530
74276	5L540
74277	5L550
74278	5L560
74279	5L570
74280	5L580
74289	5L670

MARS#	Desc.
B Belts	
74430	B38
74432	B40
74434	B42
74438	B46
74440	B48
74442	B50
74443	B51
74447	B55
74448	B56
74454	B62

MARS#	Desc.
5VX Belts	
74697	5VX1120
74698	5VX1150
74699	5VX1180
74701	5VX1400
74712	5VX450
74713	5VX560
74715	5VX600
74702	5VX670
74703	5VX710
74708	5VX780

MARS#	Desc.
BX Belts	
74619	BX46
74620	BX48
74621	BX50
74607	BX51
74632	BX62
74635	BX66
74637	BX68
74638	BX70
74646	BX75
74643	BX81

Service & Installation

Your One Source For Motors, Fan Blades, Blower Wheels, Blower Accessories, V-Belts & More!

Adapter Blades

Heavy Duty Condenser Fan Blades

MARS 3, 4 & 5 wing adapter, heavy duty condenser fan blades are designed for rigorous R/HVAC pressure applications. They will accommodate universal hex/round adapter hubs for unlimited versatility. MARS adapter fan blades are durable, efficient, and quiet. They are manufactured using high strength aluminum alloy for the blades and sturdy steel for the blade spiders.

Blade depths and pitches specified for MARS adapter fan blades allow for the replacement of a broad range of commonly used fan blades.

Typical applications are:

- Air Cooled Condensers
- Residential Air Conditioners
- Heat Pumps
- Roof Top Air Conditioners
- Power Roof Ventilators
- Unit Heaters
- Fan Coil Units

2-Wing

14" through 24" dia.

3-Wing

10" through 24" dia.

4-Wing

10" through 26" dia.

5-Wing

16" through 30" dia.



Easy To Read Labels



Fan Blade & Hub Puller



MARS NO.	DESCRIPTION
40852	Fan Blade & Hub Puller

Fits All airMARS Adapter Fan Blades and Competitors' Adapter Fan Blades

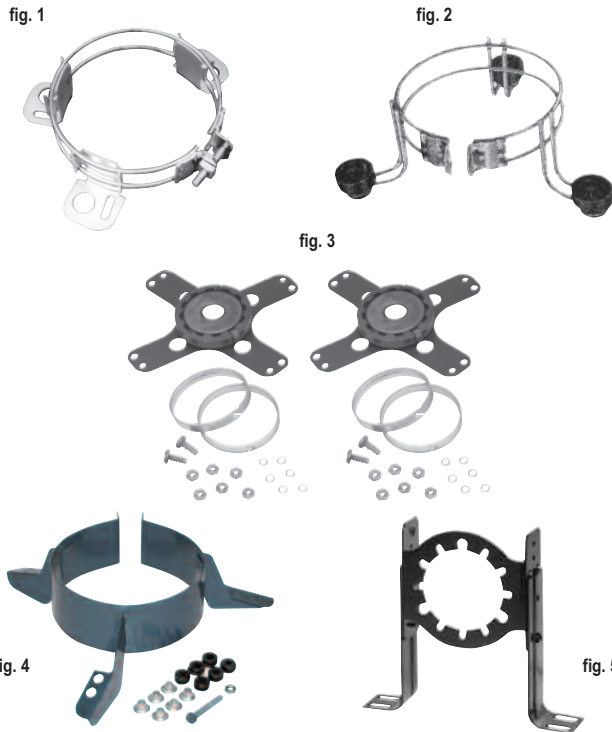
Machined Steel Provides Greater Durability



Universal Hex Hubs

MARS NO.	BORE	PER PACK
40002	1/4"	1
40003	5/16"	1
40004	3/8"	1
40005	1/2"	1
40006	5/8"	1

Mounting Brackets



MARS NO.	USED ON	DESCRIPTION	FIG. NO.
08020	39 frame and 5-1/2 in. diam. motors	adj. lug mounting bracket fits triangular bolt patterns of 6-1/8 in. to 6-9/16 in. bolt to bolt (1/4 in. x 7/8 in. and 3/4 in. x 1-3/8 in. knockouts)	1
08021	5-1/2 in. fixed motor mtg. bracket with grommets	for mounting blower motor with large wheel opening fits any 5-1/2 in. diameter motor	2
08024	5 in. fixed motor mtg. bracket with grommets	for mounting blower motor with large wheel opening fits any 5 in. diameter motor	2
08095	39 frame and 5-1/2 in. diam. motors	mounting adapter kit for base mounting 5-1/2 in. diameter motors with flat end shields	3
08049	29 and 39 frame motors, 5 in. motors	Torsion-Flex mounting adapter kit for 9 in. and 10 in. blowers	4
08050	48 frame, 5-5/8 in. and 5-1/2 in. diam. motors	Torsion-Flex mounting adapter kit for 9 in. and 10 in. blowers	4
08004	51 frame motors	shaft height adjustable 4-1/8 in. to 5-3/8 in.	5

Premium Belly Bands

Applications:

- Residential HVAC,
Direct Drive Blowers
- Welded 3-ring bracket
 - Anodized steel rod construction
 - Includes 3 sets of rubber grommets, 3 sheet metal screws, 3 galvanized steel sleeves, 1 bolt, 1 nut



MARS NO.	DESCRIPTION
08025	10" Bolt Pattern
08026	11" Bolt Pattern

Applications:

- Residential HVAC,
Direct Drive Blowers
- Welded 4-ring bracket
 - Anodized steel rod construction
 - Includes 4 sets of rubber grommets, 4 sheet metal screws, 4 galvanized steel sleeves, 1 bolt, 1 nut



MARS NO.	DESCRIPTION
08027	13" Bolt Pattern

Rheem Adapter Belly Bands

Applications:

- Rheem Blower Assemblies
- This kit allows the use of standard 5.5" blower motors (without Rheem mounting holes) in Rheem original equipment blower applications.
- Welded 4-ring bracket
 - Anodized steel rod construction
 - Includes bracket, blower housing tabs, hardware & grommets



MARS NO.	DESCRIPTION
08028	Rheem Adapter

Service & Installation

MARS Universal Refrigerant Locking Caps

MARS Universal Refrigerant Locking Caps meet or exceed local and national code requirements to prevent unauthorized refrigerant theft. Effective February 2009, the **International Mechanical Code 1101.10** and the **International Residential Code M1411.6** now require that all outdoor access ports on A/C Refrigerant circuits be made tamper resistant.

Features:

- Heavy duty brass construction
- Corrosion resistant
- Water/dust proof sleeve
- Exceeds local and national code requirements
- Protects against: refrigerant theft

Kit Includes:

- Locking cap key
- 10 Locking caps (1/4")
- 10 Waterproof sleeves
- 5 Warning labels

Made in USA



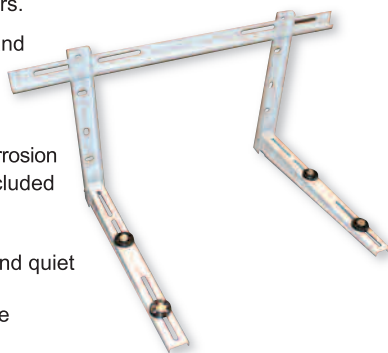
65420

MARS Universal Mini-Split Condenser Wall Mount Brackets

MARS mini-split brackets are available in four sizes to accommodate mounting of popular mini-split compressors.

Bracket kits include mounting hardware and vibration absorbers for a professional installation. Pre-assembled vertical supports speed installation.

- Powder Coat Finish - resists rust and corrosion
- Mounting and attachment hardware included
- Bracket width and depth adjust to accommodate compressor size
- Vibration pads included for a durable and quiet installation
- Pre-assembled vertical supports reduce installation time



****Order in multiples of 6****

MARS NO.	SIZE	LOAD CAPACITY (LBS)
93640	14.5" x 18" x 33.5"	260
93641	18" x 22" x 33.5"	330
93642	18" x 24" x 33.5"	400
93643	19" x 30" x 47.25"	440

A/C Mounting Brackets

Heavy duty engineered steel A/C brackets are used for mounting A/C condensers and heat pumps on vertical walls. Brackets include mounting holes and are finished in a durable gray powder coat.



MARS NO.	DESCRIPTION	MARS PACK
93630	30" Powder Coated Steel Bracket	1 Pair
93631	36" Powder Coated Steel Bracket	1 Pair
93632	42" Powder Coated Steel Bracket	1 Pair
93636	48" Powder Coated Steel Bracket	1 Pair

* Load or wall load limitations is restricted by strength of hardware used

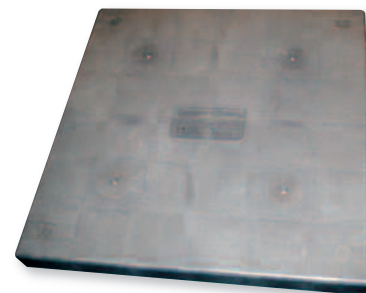
MARS A/C Condenser Pads

Features & Benefits:

- UV stable – prevents weathering or cracking
- Chemical resistant
- Solid wall construction
- Will not chip or crack
- Lightweight
- Textured surface – prevents unit from sliding
- Unique footpads – prevent unit from sinking into ground

MARS NO.	DESCRIPTION	PALLET QTY.
NEW 93540	18" X 38" X 3"	16
93560	24" x 24" x 2"	88
93577	24" x 24" x 3"	64
93561	24" x 36" x 2"	22
93578	24" x 36" x 3"	16
93565	30" x 30" x 2"	22
93584	30" x 30" x 3"	16
93562	32" x 32" x 2"	22

MARS NO.	DESCRIPTION	PALLET QTY.
93587	32" x 32" x 3"	16
93573	36" x 36" x 2"	22
93592	36" x 36" x 3"	16
93576	36" x 40" x 2"	22
93593	36" x 40" x 3"	16
93594	36" x 48" x 3"	16
NEW 93595	40" X 40" X 3"	16



- Rugged, easy to handle
- Weed wackers won't destroy the corners
- Two and three inch thick pads are available

MARS Concentric Vent Kits



MARS Concentric Vent Kits provide a single wall or roof penetration solution for high efficiency gas furnaces. Concentric vents save time and money by streamlining installation compared to the traditional 2 pipe system. Concentric vents also improve the aesthetics of the home by reducing the number of wall and roof penetrations. All necessary fittings are included in the kit. (The installing contractor needs to supply pipe and fittings between the furnace and concentric vent.)

Features

- U.L. Approved
- Available in 2" and 3" kits
- Single Wall / Roof penetration
- White PVC

MARS NO.	DESCRIPTION
72950	2" Concentric Vent Kit
72951	3" Concentric Vent Kit

MARS Horizontal Vent Terminal Kits

MARS Horizontal Vent Termination Kits are designed for use with high efficiency condensing gas furnaces. The kit provides a low profile means of terminating exterior PVC intake and exhaust wall penetrations.



- Low Profile Design
- Hides Vent Pipes for a clean and finished look
- Designed for use with High Efficiency Gas Furnaces
- Kit includes mounting hardware

MARS NO.	DESCRIPTION
72952	2" Horizontal Vent Termination Kit
72953	3" Horizontal Vent Termination Kit

Expanding Foam Sealing Products

Foam & Fill® Triple Expanding Polyurethane Sealant is quick and easy to use. It expands to fill holes, cracks, gaps and voids around pipes, outlets, vents and foundations.



93268

MARS NO.	DESCRIPTION	MARS PACK	CASE QTY.
93268	Foam sealant 12 oz.	12	12
93267	Foam sealant 24 oz.	12	12

MARS Putty

MARS Putty is non-hardening, non-toxic and can be shaped by hand to any form, and reused if necessary, for plugging openings through foundations, sealing around electrical boxes, refrigeration tube entry and so much more.



93520

Cross Reference

MARS No.	Bramec
93520	1003
93522	1004

MARS NO.	DESCRIPTION	MARS PACK	CASE QTY.
93520	1 lb. Slug - Boxed	1	50
93521	5 lb. Slug - Boxed	1	10
93522	2 lb. Slug - Boxed	1	24

MARS Heat Resistant Silicone



MARS NO.	DESCRIPTION	MARS PACK	CASE QTY.
93255	Hi-Temp. silicone red 10.1 oz.	12	12

Cool Gel - Heat Dissipating Spray

- Helps prevent heat damage to components and surrounding materials during soldering, brazing, and welding
- Unique gelled formula sticks to surfaces without dripping or running off
- Clear, non-staining gel leaves no residue, eliminating cleanup
- Safe, non-toxic, harmless to skin and odorless
- Saves time - by eliminating the costly disassembly of valves and other components before soldering, brazing or welding
- Protects the seals and seats in ball, dielectric, and solenoid valves
- Protects painted and finished surfaces from discoloration due to adjacent torch operations
- Protects soldered joints from loosening when soldering adjacent joints
- Made in USA

LA-CO.

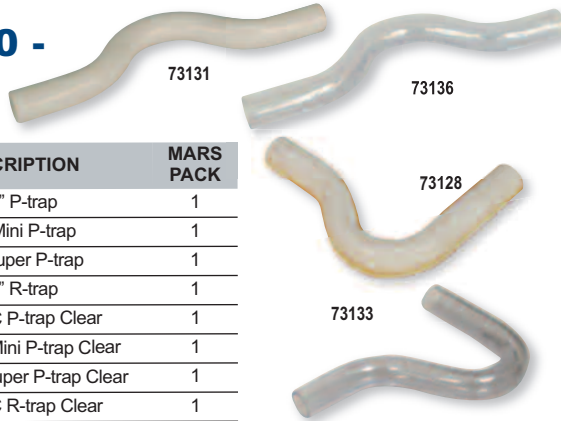


95536

MARS NO.	DESCRIPTION	MARS PACK	CASE QTY.
95536	1 quart	12	12

Service & Installation

Schedule 40 - PVC Traps



MARS NO.	DESCRIPTION	MARS PACK
73126	3/4" P-trap	1
73128	3/4" Mini P-trap	1
73129	3/4" Super P-trap	1
73131	3/4" R-trap	1
73133	3/4" PVC P-trap Clear	1
73134	3/4" PVC Mini P-trap Clear	1
73135	3/4" PVC Super P-trap Clear	1
73136	3/4" PVC R-trap Clear	1

Sealtite® Flexible Non-Metallic Conduit



MARS NO.	DESCRIPTION	MARS PACK
84118	1/2", non-metallic conduit, UL, boxed 100 ft	1
84119	3/4", non-metallic conduit, UL, boxed 100 ft	1
84120	1", non-metallic conduit, UL, boxed 100 ft	1
84121	1/2", non-metallic conduit, UL, polybag 25 ft	1
84122	3/4", non-metallic conduit, UL, polybag 25 ft	1

MARS A/C Whips

- Assembly UL listed.
- Extra long wire for easy hook up
- Bagged individually

Non-Metallic Fittings

Non-metallic conduit with non-metallic fittings.

MARS NO.	DESCRIPTION	MARS PACK
84131	4' x 1/2" #10 ga. non-metallic whip	1
84133	4' x 3/4" #8 ga. non-metallic whip UL	1
84135	6' x 1/2" #10 ga. non-metallic whip	1
84137	6' x 3/4" #8 ga. non-metallic whip UL	1
84139	8' x 1/2" #10 ga. non-metallic whip	1
84141	8' x 3/4" #8 ga. non-metallic whip	1
84143	10' x 3/4" #8 ga. non-metallic whip	1



MARS A/C Whips Metallic Fittings

Non-metallic conduit with metallic fittings.

MARS NO.	DESCRIPTION	MARS PACK
84132	4' x 1/2" #10 ga. metallic whip UL	1
84134	4' x 3/4" #8 ga. metallic whip UL	1
84136	6' x 1/2" #10 ga. metallic whip UL	1
84138	6' x 3/4" #8 ga. metallic whip UL	1

MARS A/C Whips All Metallic

MARS NO.	DESCRIPTION	MARS PACK
84125	4' x 1/2" #10 ga. all metallic whip	1
84126	4' x 3/4" #8 ga. all metallic whip	1
84127	6' x 1/2" #10 ga. all metallic whip	1
84128	6' x 3/4" #8 ga. all metallic whip	1

MARS Disconnect Boxes

Side Open Pullout



MARS NO	DESCRIPTION	STD. PACK	CASE QTY
80315	60 amp non-fused	6	6
80316	30 amp fused	6	6
80317	60 amp fused	6	6

Front Open Pullout



- Market leader
- High quality box
- UL & CUL
- NEMA 3R, rainproof
- Single phase
- Pullout type

#1 Best Seller!

MARS NO.	DESCRIPTION	MARS PACK
83315	60 amp non fused	6
83316	30 amp fused	6
83317	60 amp fused	6
83396	Compact 30 amp fused	6



MARS No. 83335

Description:
Generic brand 60 amp non-fused

MARS Pk: 6

Polypropylene Web Duct Strap

- Designed for the hanging of flexible ducting
- Made of high tensile strength - 400 lbs. min. up to 460 lbs. max.
- Abrasion & chemical resistant
- Easy to cut & staple to joists
- UL 723 Flame and Smoke



MARS NO.	DESCRIPTION	MARS PACK
86126	Black 1-3/4" x 100 yds.	24
86296	Black 3" x 100 yds	8
86297	Silver 1-3/4" x 100 yds	24
86298	Silver 3" x 100 yds	8

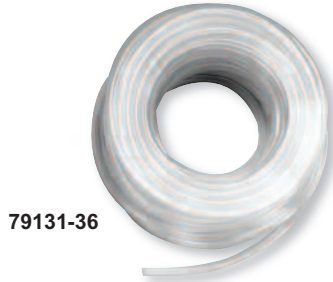
MARS Duct Straps

- Versatile & suitable for a variety of applications
- Bent tip design is easy to pick up from flat surfaces and allows faster initial threading to speed installation
- Finely spaced gear rack allowing for exact adjustment ensuring a snug fit



MARS NO.	DESCRIPTION	MARS PACK
86128	36" Duct Strap, 175 lbs Up to 10" Duct, Natural	50

MARS Clear Vinyl Tubing



MARS NO.	DESCRIPTION	CASE QTY.
79131	1/4" ID clear tubing 32 PSI - .375 O.D.	100 feet
79132	3/8" ID clear tubing 27 PSI - .500 O.D.	100 feet
79133	1/2" ID clear tubing 24 PSI - .625 O.D.	100 feet
79134	5/8" ID clear tubing 21 PSI - .750 O.D.	100 feet
79135	3/4" ID clear tubing 19 PSI - .890 O.D.	100 feet
79136	7/8" ID clear tubing 16 PSI - 1.015 O.D.	50 feet

MARS Heavy Duty PVC Braided Line Tubing

- 41°F (5°C) to 140°F (60°C)

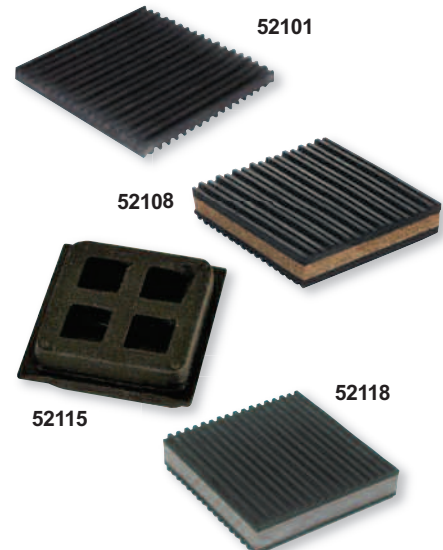


MARS NO.	DESCRIPTION	WORKING PRESSURE	BURST PRESSURE	CASE QTY.
79045	1/4" ID - .407 OD	120 PSI	360 PSI	50'
79046	3/8" ID - .532 OD	120 PSI	360 PSI	50'
79047	1/2" ID - .673 OD	90 PSI	270 PSI	50'
79048	5/8" ID - .822 OD	90 PSI	270 PSI	50'
79049	3/4" ID - .986 OD	90 PSI	270 PSI	50'
79050	7/8" ID - 1.111 OD	60 PSI	180 PSI	50'

Anti-Vibration Pads

MARS offers a complete line of anti-vibration pads. These high quality rubber pads provide maximum loading of 60 lbs. per square inch. Anti-vibration pads can be used on any type of mechanical/electrical machines such as pumps, motors, air conditioning units, generators, compressors, etc. The plain rubber pads have grooves on both sides. The cork rubber pads are the same but with the added advantage of reduction in sound level. The natural rubber Iso-Pads can be easily cut for odd sized dimensions under equipment legs and supports. The use of these pads eliminates the need for bolting down equipment to the floor. These Iso-Pads provide superior isolation, attenuation and vibration characteristics.

MARS NO.	DESCRIPTION	MARS PACK
52101	2" x 2" x 3/8" Rubber	1
52103	4" x 4" x 3/8" Rubber	1
52104	6" x 6" x 3/8" Rubber	1
52107	18" x 18" x 3/8" Rubber	1
52108	2" x 2" x 7/8" Cork/Rubber	1
52109	3" x 3" x 7/8" Cork/Rubber	1
52110	4" X 4" X 7/8" Cork/Rubber	1
52111	6" x 6" x 7/8" Cork/Rubber	1
52114	18" x 18" x 7/8" Cork/Rubber	1
52115	2" x 2" x 3/4" Iso-Pad	1
52116	4" x 4" x 3/4" Iso-Pad	1
52117	18" x 18" x 3/4" Iso-Pad	1
52119	2" x 2" x 7/8" Foam/Rubber	1
52118	4" x 4" x 7/8" Foam/Rubber	1
52120	6" x 6" x 7/8" Foam/Rubber	1
52122	18"x18"x7/8" Foam/Rubber	1



Service & Installation

Stranded Copper Building Wire, 19 Strands 10-14 Ga. THHN, 16-18 Ga. TFFN, 600V, 90°C



84322

MARS NO.	DESCRIPTION	MARS ACK
84322	10 gauge red 100' spool	1
84341	10 gauge black 500' spool	1
84349	10 gauge blue 100' spool	1

SJ Wire - 250 Foot Rolls



84380

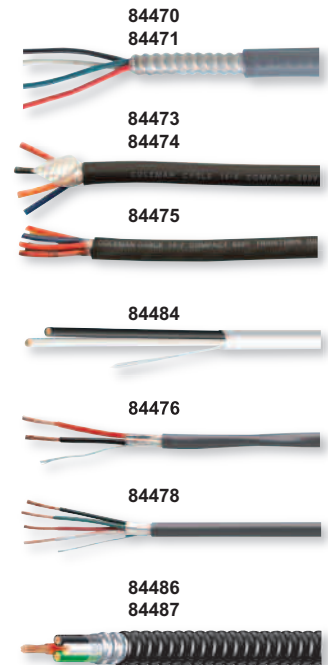
MARS NO.	DESCRIPTION	MARS PACK
84380	12/3 250 ft. reel	1
84381	14/3 250 ft. reel	1
84382	16/3 250 ft. reel	1

Mini-Split Installation Wire

Corra/Clad MC Cable consists of UL listed THHN soft drawn annealed solid copper conductors, cabled with fillers and wrapped with an overall solid Flexi-Rib aluminum sheath. The continuous sheath provides watertight protection and it is covered with a PVC outer jacket for outdoor use or direct burial. Cost effective, easy to strip and install. Meets all national codes and is suitable for outdoor use, under concrete, underground, and through interior walls and ceilings.

Compact 600 and Shielded Low Voltage Cables offer additional options to provide power and control to mini-split installations. Compact 600 uses a TPE jacket and is flexible, easy to strip, and is burial rated.

EZ-IN™ cable is an all-purpose cable that meets code for both interior and exterior use, increasing the speed of installation and making sure the job will pass inspection. EZ-IN™ Mini-Split Cable can be installed without the use of conduit and may be installed indoors and outdoors in wet locations.



MARS NO.	DESCRIPTION	MARS PACK
Compact 600 Cable: 600V, UL, UV Rated, Direct Burial		
84473	14/4 Solid THHN Compact 600V – 50' Roll	1
84474	14/4 Solid THHN Compact 600V – 250' Reel	1
84479	14/4 Stranded THHN Compact 600V – 50' Roll	1
84480	14/4 Stranded THHN Compact 600V – 250' Reel	1
Shielded Low Voltage Cable: 300V, NEC 725/800, ETL, CMR/CL3R		
84485	16/2 Stranded Shielded – 50' Roll	1
84484	16/2 Stranded Shielded – 250' Reel	1
84491	16/4 Stranded Shielded 300V – 50' Roll	1
84492	16/4 Stranded Shielded 300V – 250' Reel	1
84482	18/2 OAS CMR/CL3R Gy – 500' Reel	1
84478	18/4 Stranded BC Shielded – 50' Roll	1
84483	18/4 OAS CMR/CL3R Gy – 500' Reel For LG Mini-Splits	1
EZ-IN™ Cable: 600V, UL, All Purpose, UV Rated, Direct Burial		
84486	14/4 Stranded EZ-IN,™ 600V, 50' Roll	1
84487	14/4 Stranded EZ-IN,™ 600V, 250' Reel	1



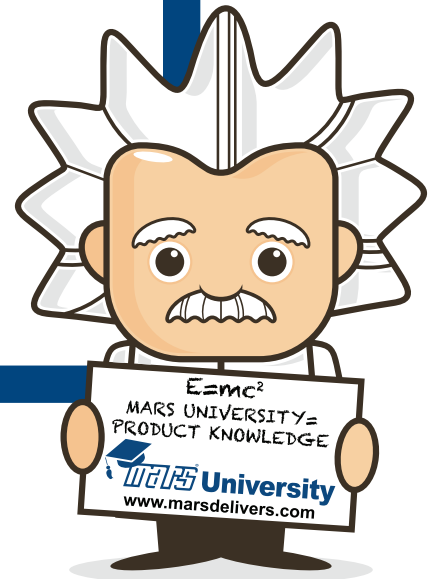
250 Rabro Drive East
Hauppauge, New York 11788

PRESORT STANDARD
U.S. POSTAGE
PAID
PERMIT #255
HICKSVILLE, NY



MARS University

- Available at www.MARSdelivers.com
- Extensive Product Training
- Reward Points for courses taken
- Complete Training Course Library
- Available on all mobile devices



Technical Helpline:
800.678.9888