



HVAC Motors



JARD[®]
by **MARS**

www.marsdelivers.com



Condenser Fan Motors

Condenser Fan Motors

JARD replacement condenser fan motors are designed for residential and light commercial HVAC/R applications suitable for either vertical shaft-up or shaft-down mounting. Shell and end shields are enclosed for weather protection. A weep hole is provided in each end shield to allow condensate to drain.

Features:

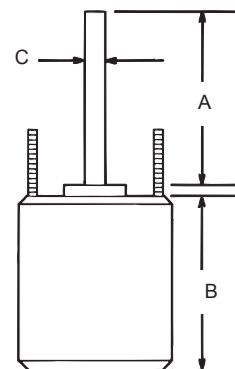
- All angle, sleeve or ball bearing
- Rheem mounting holes w/screws
- Reversible rotation
- Thru bolt or band mounting
- Capacitor requirement noted on motor label
- Up/Down design

Specifications:

- Class "B" insulation
- Single phase, 60 Hz
- Thermal overload protected
- Fan duty, continuous air over
- 26 & 36 inch leads
- UL Recognized

Cross Reference

JARD No.	Economaster	Smart Electric	Wagner/ Diversitech	Packard	US Motors/ Emerson
22403	EM3403	-	-	60825	1873
22404	EM3404	SE3338	WG840204	40825	1874
22405	EM3405	SE3339	WG840205	30825	1875
22746	EM3746	-	-	-	1870
22727	EM3727	SE3727	WG840727	43727	1859
22728	EM3728	SE3728	WG840728	43728	1860
22729	EM3729	SE3729	WG840729	43729	1861
22730	EM3730	SE3730	WG840730	43730	1862
22731	EM3731	SE3731	WG840731	43731	1868



Reversible Rotation - Single Speed

MARS NO.	HP	VOLTS	AMPS	CAP REQUIRED	ENCL.	BRG.	DIMENSIONS			LEAD LENGTHS
							A	B	C	

1075 RPM

22727	1/6	208-230	0.90	5/370	TEAO	Ball	6.50	4.23	1/2	26"
22728	1/4	208-230	1.8	5/370	TEAO	Ball	6.50	4.23	1/2	26"
22729	1/3	208-230	2.4	7.5/370	TEAO	Ball	6.50	5.23	1/2	26"
22730	1/2	208-230	3.5	10/370	TEAO	Ball	6.50	5.73	1/2	26"
22731	3/4	208-230	5.2	10/370	TEAO	Ball	6.50	6.23	1/2	30.5"

825 RPM

22403	1/6	208-230	1.0	5/370	TEAO	Ball	6.50	4.23	1/2	36"
22404	1/4	208-230	1.6	5/370	TEAO	Ball	6.50	4.48	1/2	36"
22405	1/3	208-230	1.9	7.5/370	TEAO	Ball	6.50	5.23	1/2	36"
22746	1/2	208-230	2.8	12.5/370	TEAO	Ball	6.50	5.70	1/2	36"

Toll Free: 800-445-4155 • Fax: 631-348-7160

MARS Technical Help Line: 800-678-9888 M-F 8 am - 5 pm EST

WARNING:
Cancer and Reproductive Harm
www.P65Warnings.ca.gov

Condenser Fan Motors

Condenser Fan Motors

JARD replacement condenser fan motors are designed for residential and light commercial HVAC/R applications suitable for either vertical shaft-up or shaft-down mounting. Shell and end shields are enclosed for weather protection. A weep hole is provided in each end shield to allow condensate to drain.

Features:

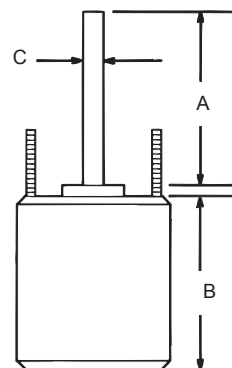
- All angle, ball bearing
- Rheem mounting holes w/screws
- Reversible rotation
- Thru bolt or band mounting
- Capacitor requirement noted on motor label
- Up/Down design
- 48" Leads

Specifications:

- Class "B" insulation
- Single phase, 60 Hz
- 70°C, 158°F
- Thermal overload protected
- Fan duty, continuous air over
- UL Recognized

Cross Reference

JARD No.	Economaster	Smart Electric	Wagner/ Diversitech	Packard	US Motors/ Emerson
26726	-	-	-	-	-
26727	EM3727	-	WG840727	43727	1859
26728	EM3728	-	WG840728	43728	1860
26729	EM3729	-	WG840729	43729	1861
26730	EM3730	-	WG840730	43730	1862
26731	EM3731	-	WG840731	43731	1868
26403	EM3403	-	-	60825	1873
26404	EM3404	-	WG840204	40825	1874
26405	EM3405	-	WG840205	30825	1875
26746	EM3746	-	-	-	1870



Reversible Rotation - Single Speed

MARS NO.	HP	VOLTS	AMPS	CAP REQUIRED	ENCL.	BRG.	DIMENSIONS			LEAD LENGTHS
							A	B	C	

1075 RPM

26726	1/5	208-230	0.90	5/370	TEAO	Ball	6.50	4.23	1/2	48"
26727	1/6	208-230	0.90	5/370	TEAO	Ball	6.50	4.23	1/2	48"
26728	1/4	208-230	1.8	5/370	TEAO	Ball	6.50	4.23	1/2	48"
26729	1/3	208-230	2.4	7.5/370	TEAO	Ball	6.50	5.23	1/2	48"
26730	1/2	208-230	3.5	10/370	TEAO	Ball	6.50	5.73	1/2	48"
26731	3/4	208-230	5.2	10/370	TEAO	Ball	6.50	6.23	1/2	48"

825 RPM

26403	1/6	208-230	1.0	5/370	TEAO	Ball	6.50	4.23	1/2	48"
26404	1/4	208-230	1.6	5/370	TEAO	Ball	6.50	4.48	1/2	48"
26405	1/3	208-230	1.9	7.5/370	TEAO	Ball	6.50	5.23	1/2	48"
26746	1/2	208-230	2.8	12.5/370	TEAO	Ball	6.50	5.70	1/2	48"

Toll Free: 800-445-4155 • Fax: 631-348-7160

MARS Technical Help Line: 800-678-9888 M-F 8 am - 5 pm EST

WARNING:
Cancer and Reproductive Harm
www.P65Warnings.ca.gov



Direct Drive Blower Motors

Direct Drive Blower Motors



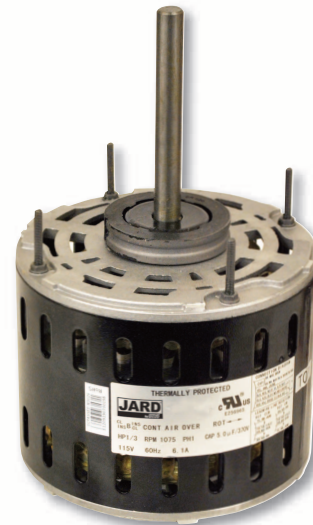
JARD direct drive blower motors are ideal for use in commercial and residential furnaces and air conditioners. All models are three speed standard efficiency and are electrically reversible.

Features:

- All angle sleeve bearing
- Rheem mounting holes
- 3 speeds
- 1/2 inch extended thru bolts
- 2-1/4 inch resilient rings
- 4 inch long, 1/2 inch diameter shaft

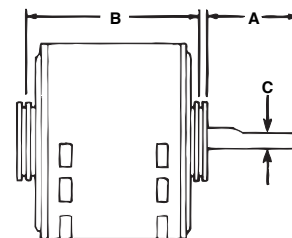
Specifications:

- Class "B" insulation
- Single phase, 60 Hertz
- Thermal overload protected
- Fan duty, continuous, air over
- Open construction
- 26 & 30 inch leads
- UL Recognized



Cross Reference

JARD No.	Economaster	Smart Electric	Wagner/ Diversitech	Packard	US Motors/ Emerson
22583	EM3583	SE3583	WG840583	43583	1863
22584	EM3584	SE3584	WG840584	43584	1971
22585	EM3585	SE3585	WG840585	43585	1864
22586	EM3586	SE3586	WG840586	43586	1972
22587	EM3587	SE3587	WG840587	43587	1865
22588	EM3588	SE3588	WG840588	43588	1973
22589	EM3589	SE3589	WG840589	43589	8904
22590	EM3590	SE3590	WG840590	43590	8905



1075 RPM - Three Speed - Reversible Rotation

MARS NO.	HP	ROTATION	VOLTS	AMPS	CAP REQUIRED	ENCL.	BRG.	DIMENSIONS			LEAD LENGTHS
								A	B	C	
22583	1/4	Rev	115	4.2	5/370	OAO	Ball	4.50	4.89	1/2	26"
22584	1/4	Rev	208-230	1.8	5/370	OAO	Ball	4.50	4.89	1/2	26"
22585	1/3	Rev	115	6.1	5/370	OAO	Ball	4.50	5.14	1/2	30"
22586	1/3	Rev	208-230	2.7	5/370	OAO	Ball	4.50	5.14	1/2	26"
22587	1/2	Rev	115	7.5	10/370	OAO	Ball	4.50	5.89	1/2	30"
22588	1/2	Rev	208-230	3.2	7.5/370	OAO	Ball	4.50	5.64	1/2	30"
22589	3/4	Rev	115	11.2	15/370	OAO	Ball	4.50	6.14	1/2	30"
22590	3/4	Rev	208-230	4.5	10/370	OAO	Ball	4.50	6.14	1/2	30"

Toll Free: 800-445-4155 • Fax: 631-348-7160

MARS Technical Help Line: 800-678-9888 M-F 8 am - 5 pm EST

WARNING:
Cancer and Reproductive Harm
www.P65Warnings.ca.gov



Multi-Horsepower Motors



Multi-Horsepower Direct Drive Motors

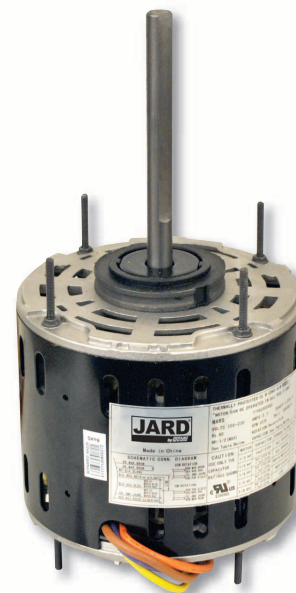
JARD multi-horsepower direct drive blower motors are used in residential and commercial furnaces, air conditioners, exhaust fans, and other air handling equipment installed in clean and dry environments. Four models cover both 115 and 208-230 volt applications from 1/6 through 3/4 HP. All models feature Rheem shell mounting holes.

Features:

- Rheem mounting holes
- Reversible rotation
- 2-1/4 inch resilient rings

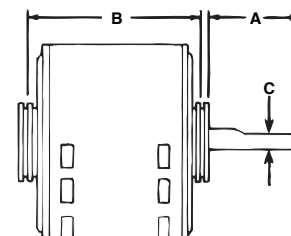
Specifications:

- Class "B" insulation
- Single phase, 60 Hz
- Thermal overload protected
- 41 inch leads
- UL Recognized



Cross Reference

JARD No.	Economaster	Smart Electric	Wagner/ Diversitech	Packard	US Motors/ Emerson
22463	EM3463	SE3463	WG840463	45460	5460
22464	EM3464	SE3464	WG840464	45461	5461
22466	EM3466	SE3466	WG840466	45470	5470
22467	EM3467	SE3467	WG840467	45471	5471



1075 RPM - Four Speed - Reversible Rotation

MARS NO.	HP	ROTATION	VOLTS	ENCL.	BRG.	DIMENSIONS			LEAD LENGTHS
						A	B	C	
22463	1/6 - 1/2	Rev	115	OAO	Sleeve	5.50	4.73	1/2	42"
22464	1/6 - 1/2	Rev	230	OAO	Sleeve	5.50	4.73	1/2	41"
22466	1/5 - 3/4	Rev	115	OAO	Ball	5.80	5.73	1/2	41"
22467	1/5 - 3/4	Rev	230	OAO	Ball	4.60	5.23	1/2	41"

Toll Free: 800-445-4155 • Fax: 631-348-7160

MARS Technical Help Line: 800-678-9888 M-F 8 am - 5 pm EST

WARNING:
Cancer and Reproductive Harm
www.P65Warnings.ca.gov

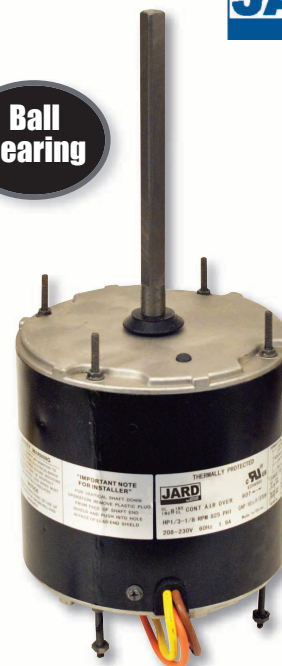


Multi-Horsepower Motors



Multi-Horsepower Condenser Fan Motors

JARD multi-horsepower condenser fan motors are designed for either shaft up or shaft down applications. All motors are suitable for air conditioning or heat pump applications. These motors need to be mounted within the airflow of the fan for proper cooling.



Features:

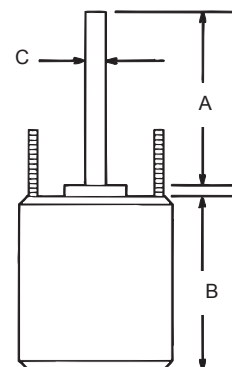
- Rheem mounting holes w/screws installed
- Thru bolt or band mounting
- Water slinger on shaft
- Air conditioning or heat pump duty

Specifications:

- Class "B" insulation
- Single phase, 60 Hz
- Thermal overload protected
- UL Recognized

Cross Reference

JARD No.	Economaster	Smart Electric	Wagner/ Diversitech	Packard	US Motors/ Emerson
22458	EM3458	-	-	45458BF	5458
22459	EM3459	-	-	45488BF	5464
22465	EM3465	SE3465	WG840465	45458B	5462
22468	EM3468	SE3468	WG840468	-	5465
22469	EM3469	SE3469	WG840469	-	5464



Reversible Rotation - Single Speed

MARS NO.	HP	ROTATION	RPM/ SPEED	VOLTS	ENCL.	BRG.	DIMENSIONS			LEAD LENGTHS
							A	B	C	
22458	1/6 - 1/3	Rev	1075	208-230	TEAO	Ball	6.50	3.82	1/2	36"
22459	1/8 - 1/3	Rev	825	208-230	TEAO	Ball	6.50	5.48	1/2	36"
22465	1/6 - 1/3	Rev	1075/2	208-230	TEAO	Ball	5.00	4.73	1/2	38"
22468	1/8 - 1/2	Rev	1075/2	208-230	TEAO	Ball	5.00	5.48	1/2	38"
22469	1/6 - 1/3	Rev	825/2	208-230	TEAO	Ball	5.00	5.48	1/2	42"

Toll Free: 800-445-4155 • Fax: 631-348-7160

MARS Technical Help Line: 800-678-9888 M-F 8 am - 5 pm EST

WARNING:
Cancer and Reproductive Harm
www.P65Warnings.ca.gov



Multi-Horsepower Motors



Multi-Horsepower Condenser Fan Motors

JARD multi-horsepower condenser fan motors are designed for either shaft up or shaft down applications. All motors are suitable for air conditioning or heat pump applications. These motors need to be mounted within the airflow of the fan for proper cooling.

Features:

- Rheem mounting holes w/screws installed
- Thru bolt or band mounting
- Water slinger on shaft
- Air conditioning or heat pump duty
- 48" Leads

Specifications:

- Class "B" insulation
- Single phase, 60 Hz
- 70°C, 158°F
- Thermal overload protected
- UL Recognized

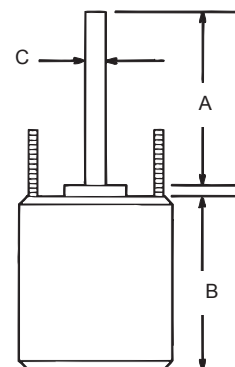
Ball Bearing

70°C



Cross Reference

JARD No.	Economaster	Smart Electric	Wagner/Diversitech	Packard	US Motors/Emerson
26458	EM3458	-	-	-	5458
26459	EM3459	-	-	-	5464
26465	EM3465	-	WG840465	-	5462
26468	EM3468	-	WG840468	-	5465
26469	EM3469	-	WG840469	-	5464



MARS NO.	HP	ROTATION	RPM/SPEED	VOLTS	ENCL.	BRG.	DIMENSIONS			LEAD LENGTHS
							A	B	C	
26458	1/6 - 1/3	Rev	1075	208-230	TEAO	Ball	6.50	3.82	1/2	48"
26459	1/8 - 1/3	Rev	825	208-230	TEAO	Ball	6.50	5.48	1/2	48"
26465	1/6 - 1/3	Rev	1075/2	208-230	TEAO	Ball	5.00	4.73	1/2	48"
26468	1/8 - 1/2	Rev	1075/2	208-230	TEAO	Ball	5.00	5.48	1/2	48"
26469	1/6 - 1/3	Rev	825/2	208-230	TEAO	Ball	5.00	5.48	1/2	48"

Toll Free: 800-445-4155 • Fax: 631-348-7160

MARS Technical Help Line: 800-678-9888 M-F 8 am - 5 pm EST

WARNING:
Cancer and Reproductive Harm
www.P65Warnings.ca.gov

